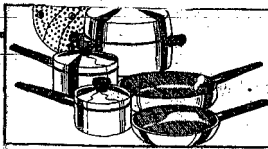




**Plainview pins Winside wrestlers**  
Wrestling Winside Wildcats got clawed by the Plainview Pirates Tuesday — see story, photo on page 6a.



**Cooking school slated for Wayne**  
A homemakers school for northeast Nebraskans has been set for Feb. 11 in Wayne — see story on page 2a.

# THE WAYNE HERALD

ONE-HUNDRED SIXTH YEAR

WAYNE, NEBRASKA 68787, THURSDAY, JANUARY 21, 1982

THIS ISSUE — TWO SECTIONS, 18 PAGES

NUMBER THIRTY-THREE

## Chamber honors mayor as Citizen of the Year

### Annual meeting features '81 projects

Mayor Wayne Marsh, a long-time city businessman, has received the highest award presented by the Wayne Chamber of Commerce.

During the chamber's annual meeting Sunday night, the 48-year-old mayor received the chamber's annual Citizen of the Year award for 1981.

More than 130 chamber members attended the meeting and special award ceremonies held at the Black Knight Restaurant.

"YOU HONORED me three years ago when you elected me mayor on a write-in vote," Marsh told his chamber colleagues.

"This is even a greater honor," he continued, his words heavy with emotion. "You've made me very proud."

Then, using his characteristic sense of humor, the city's chief executive quipped that he "knew we could do it once Jim got on the board."

The remark brought the house down as the mayor turned toward his son, Jim Marsh, who was seated in the audience. The younger Marsh, who is business manager of The Wayne Herald, was elected to the chamber's nine-member board of directors in December.

MAYOR MARSH thanked the chamber members for the award and told them:

"We just don't realize how good this chamber is for the city. We should realize how really important the organization is to the future of the city."

Marsh, a Wayne resident for some 39 years, was born Jan. 21, 1914, in McLean.

The son of the late Douglas and Sarah Marsh, he is a 1930 graduate of Osmond High School and attended Wayne State College during this country's Depression years.

Marsh worked for several businesses, including Epley Hotels and McKesson-Robbins in Omaha, before coming to Wayne in 1943.

THROUGHOUT HIS business career, Marsh also has worked as a tax consultant, a job he continues to this day in offices at Wayne's Mineshaft Mall.

He joined the Internal Revenue Service during his days in Omaha and was transferred to this area to head the agency's regional office in Norfolk.

Lack of congressional funding for the office prevented the opening of that office and in 1948 Marsh left the IRS, settled in Wayne and managed the local Ford garage until 1949.

He and his wife, Opal, are the parents of two children, Jim and Cheri Marsh Erickson, both of Wayne. Erickson is an advertising account executive for The Sundowner, a regional farm publication based in Wayne.

AN ACCOMPLISHED musician, fisherman and lawn-care specialist, Mayor Marsh heard the sound of the trumpet during this country's Big Band era.

In addition to several successful Wayne business ventures, he spent several years

playing trumpet for big bands that toured the country.

Marsh had opened an accounting office in Wayne in 1947, and in 1949 he bought the Wayne Bookstore. In 1948, he served as secretary to the Wayne Chamber of Commerce.

Marsh's income tax work continued as he and a partner built Sav-Mor Drug in Wayne. The operation was sold three years later to Bob Lund and is now owned and operated by Dick Keidel.

MARSH ALSO operated a bookstore at Wayne State College for about five years and opened a bookstore in O'Neill in 1973.

He set an employee up in business in the O'Neill bookstore and sold out to her in 1978.

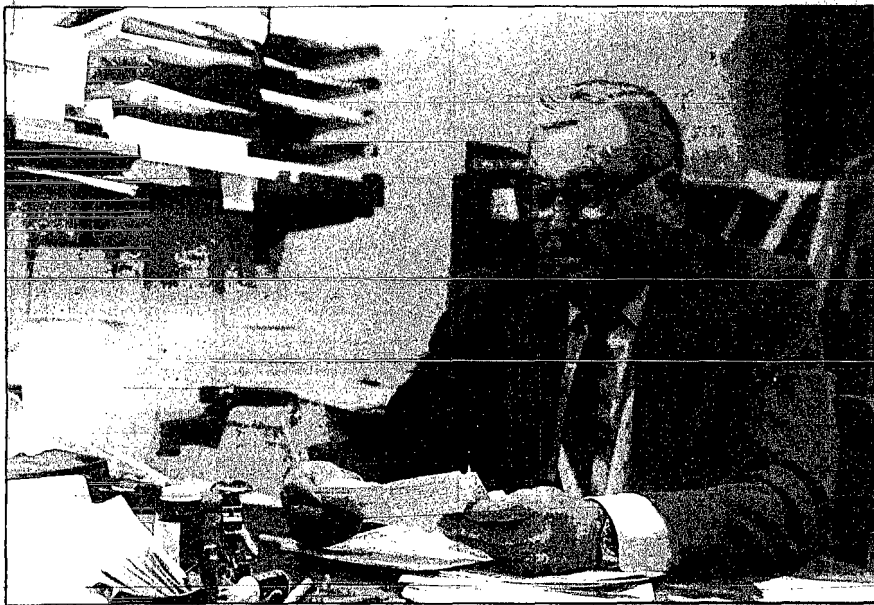
Now out of the bookstore business, Marsh limits his business activities to income tax consulting.

He served six years as a city councilman "about 20 years ago" and was elected to the mayoral post as a write-in candidate in 1978. He is serving his final year in the four-year term.

In addition to chamber membership, Marsh is a member of the Masonic Lodge, Elks Lodge and Kiwanis.

A past trustee of the First United Methodist Church, Marsh is a member of the Wayne Country Club and Wayne Industries Inc.

See CITIZEN, Page 8A



MAYOR WAYNE MARSH at work in his Mineshaft Mall office.

Photography: Randall Howell

## Industrial panel taps banker for president

A Wayne banker has been elected president of Wayne Industries Inc. for 1982.

Robert Reeg, president of First National Bank of Wayne, was elected president of the industrial development group Tuesday, only minutes after being re-elected to the organization's board of directors.

Elected vice president — a position held by Reeg last year — for the coming year was Glen Ettingson of Ettingson Motors.

THE NEW OFFICERS were elected during January's monthly business meeting, which convened after a brief noon-luncheon at The Windmill Restaurant.

Joining Reeg as newly elected directors were David Ley, president of State National Bank and Trust Co. of Wayne, and Darrell Moore, president of Marra Home Improvement Co., Wayne.

Reeg succeeds outgoing president Bob Jordan. Though Jordan stepped down as president, he will remain a member of the board as immediate past president of the industrial group.

Roger Toomey, executive vice president of the Wayne Chamber of Commerce, was re-elected as executive secretary for Wayne Industries. The post traditionally goes to the chamber manager.

DURING TUESDAY'S annual meeting, Toomey told the group that Wayne Industries had spent the year "gearing up for a better 1982."

Noting that 1981 had not been a banner year for business and industrial development, Toomey said the group acted on advice from the Nebraska Department of Economic Development, and the industrial development divisions of Peoples Natural Gas and Nebraska Public Power District.

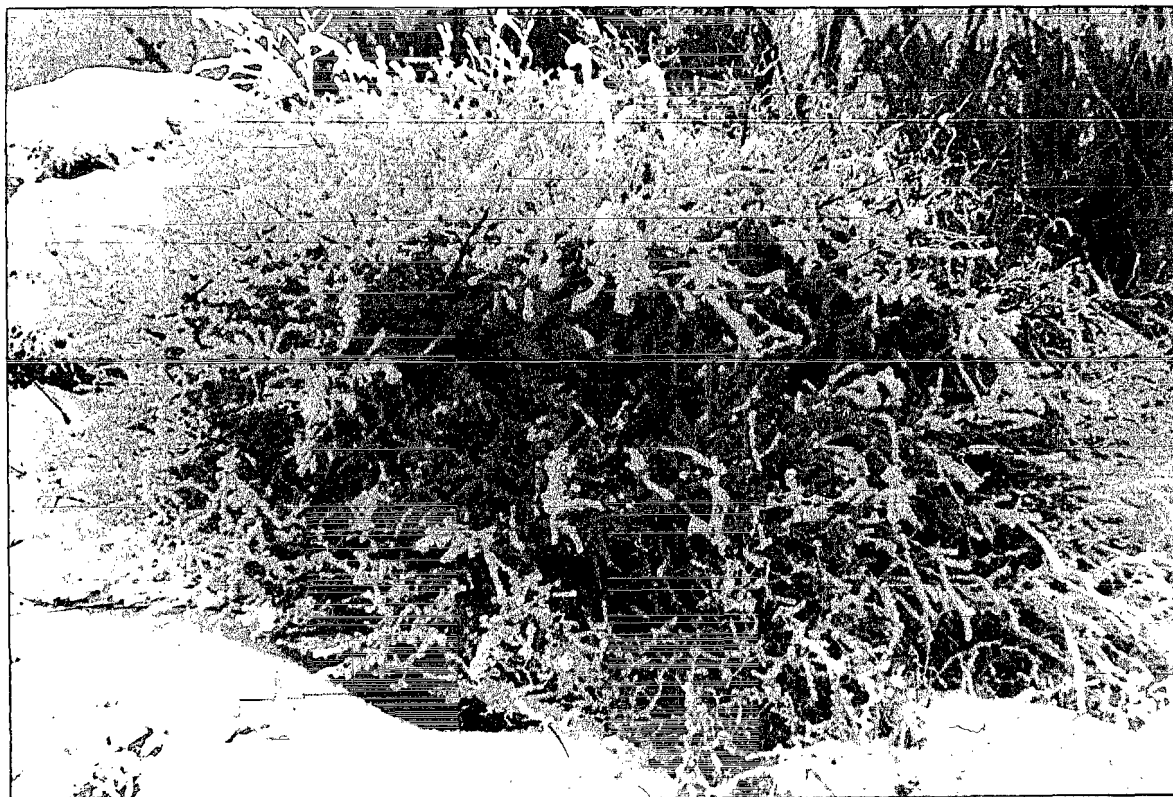
"We didn't totally roll over and play dead, though," Toomey said as he reviewed the activities of Wayne Industries for 1981.

Toomey's review of 1981 projects included an update of the community profile sheets and the city's industrial facts book.

"WE'VE ALSO reprinted our Meet Wayne brochure," Toomey said, noting that the group sent prospective letters to major businesses in Omaha and Sioux City.

Toomey also reported that the group updated the industrial slide show, which is

See BANKER, Page 8A



COMMON CROPLAND weeds take on a snow-blasted beauty during windy Nebraska winters.

Photography: Randall Howell

## Wayne State instructors to teach in French Alps

Wayne State College English teacher Dr. Barbara (Bobbye) Lupack has been reassigned to teach in the French Alps. Originally scheduled to teach at the University of Wrocław, Poland, Lupack and her husband, Alan, had been awaiting word on reassignment through the federal Fulbright grant program.

The Lupacks left Poland just before Christmas after martial law was declared on Dec. 13.

LUPACK HAD been scheduled to teach in Poland from September through June.

The WSC instructor is expected to finish her contract under the Fulbright program by teaching at Centre Universitaire de Chambéry in Chambéry, France. Chambéry, which is in the French Alps, is near Grenoble.

Lupack has informed WSC officials that she will be teaching there from mid-February until her contract expires in late June or July.

THE LUPACKS spent eight days under martial law in Poland.

When Poland's ambassador to the United States defected, the couple decided to leave the communist country.

After a 30-hour cross country train trip, the couple arrived in Cologne, West Germany, on Dec. 22.

They had been waiting at a U.S. military base in England for reassignment.

## Feeders planning 2-day membership drive

By Randall Howell

Nineteen years ago this month, the Dixon County Livestock Feeders Association met with members from three other counties to formulate plans for the birth of a new organization.

One month later, on February 22, 1963, the Northeast Nebraska Livestock Feeders Association was formed.

The new association was formed by livestock feeders in Dixon, Wayne, Thurston and Dakota counties.

FROM A ROSTER of under 50 leaders, four-county membership grew to 259 in 1978. Today, after a three-year decline in

**EDITOR'S NOTE:** When northeast Nebraska's livestock feeders first organized they formed a foundation that launched a national association. Next week, the Northeast Nebraska Livestock Feeders Association, launches an all-out, two-day membership drive to strengthen its influence on the livestock industry and American farm policy. This article, the first of two, is an update on the>NNLFA as it stands today.

membership, the Northeast Nebraska Livestock Feeders Association is planning an all-out effort to restore the ranks.

Part of the effort includes a concentrated two-day membership drive to be conducted on Wednesday and Thursday, Jan. 27-28, according to Gerald Muller of rural Concord, association president.

The association, which has grown from Dixon County beginnings to become a state and national organization representing livestock feeders in politics, government, research and the marketplace, plans a farm-door-to-farm-door membership drive throughout the four counties.

THE MEMBERSHIP drive will start

Wednesday morning with two kickoff breakfasts — one in Wayne and one in Emerson.

According to Muller, the four-county area represented by the>NNLFA has been divided into two sections for the membership drive. The membership drive planning committee has grouped the counties for better canvassing.

The Wayne and Dixon County kickoff breakfast will be at 8:30 Wednesday in The Windmill Restaurant.

Rex Messersmith,>NNLFA communications director, will be the main speaker for the breakfast kickoff in Wayne.

THE THURSTON AND Dakota County kickoff breakfast is scheduled for Wednesday morning at Emerson.

Paul Johnston, executive vice president of the Nebraska State Livestock Feeders Association, is expected to be the guest speaker for the Emerson kickoff breakfast.

Also expected to be on hand for the two-day membership drive are Larry Schram of Papillion, immediate past president of the state association, and Tom Gustafson of Wakefield, state association president-elect.

According to Muller, the membership drive has been in the planning stages since November. He said the goal is to push the>NNLFA membership to 1979 levels (256).

See FEEDERS, Page 8A

# 2a - on the record

The Wayne Herald, Thursday, January 21, 1982

## Carroll woman injured as car rolls on highway

A 39-year-old rural Carroll woman was treated at the Wayne Family Practice Clinic and released following a one-car rollover east of Wayne Monday morning.

According to State Trooper Al Walton of Wayne, who investigated the accident, Patricia Jenkins was taken to Wayne by a passing motorist after the 8:45 a.m. accident.

She reportedly suffered bruises and a neck injury in the rollover, which totaled the 1976 Chevrolet she was driving.

TROOPER WALTON said the Jenkins car was eastbound on state Highway 35 about a half mile from the highway's junction with state Highway 98 when the accident occurred.

Jenkins lost control of the car on the icy highway, according to Trooper Walton, who said the auto slid sideways across the road.

When the wheel hit the dry road shoulder, the car rolled over and back onto its wheels again, the trooper said.

There were no other passengers in the Jenkins car.

## obituaries

### Emma Noe

Funeral services for Dixon County's oldest resident will be held at 2 p.m. Friday at the United Methodist Church at Allen.

Mrs. Frederick (Emma) Noe, 106, of Allen, died Tuesday in the Wakefield Health Care Center.

The Rev. Anderson Kwankin will officiate at services and burial will be in the Eastview Cemetery in Allen under the direction of Bressler Funeral Home of Wakefield.

Mrs. Noe, the former Emma Elvira Royce, was born to Mr. and Mrs. Delancy Royce on July 19, 1875, at Irving, Iowa, the sixth in a family of eight.

She came to Wakefield in 1893 and went to Waterbury in 1897 to manage Mrs. Fannie Conner's General Store. It was there that she met Fred Noe, a former teacher who was farming at the time. They were married April 8, 1898, at her parents' farm home five miles northeast of Wakefield.

Mr. and Mrs. Noe farmed south of Waterbury following their marriage. They resided on several farms around Allen and Dixon until 1942 when they moved into Allen. Mr. Noe died in April of 1947.

Mrs. Noe was a longtime member of the United Methodist Church and taught Sunday school for many years.

Her 155 descendants include six daughters, Martha Noe, Mrs. Emma Shortt and Mrs. Marvin (Grace) Green, all of Allen; Mrs. Florence Malcolm of Bakersfield, Calif.; Mrs. Esther Brandt of Creighton, and Mrs. Rex (Mary) Miner of El Centro, Calif.; four sons, Leslie, Robert and Oliver, all of Dixon, and Ralph of Melba, Idaho; 37 grandchildren; 80 great grandchildren; and 33 great great grandchildren.

### Glen Noe

Glen Noe, 61, of Allen died Jan. 11 at a Sioux City hospital following a short illness.

Services were held last Thursday at the United Methodist Church in Allen. The Rev. Anderson Kwankin officiated.

Glenn E. Noe was born Oct. 20, 1920, at Highmore, S.D. He moved to Allen as a child. He married Mabel Jacobsen on July 16, 1942, at South Sioux City. He was a retired carpenter.

Survivors include his wife, Mabel of Allen; three sons, Robert, John and Terry, all of Allen; two daughters, Mrs. George (Susan) Cooper of Wakefield and Mrs. Glenn (Pauline) Kumm of Allen; 19 grandchildren; two brothers, Marvin of Allen and Vert of Laurel; two sisters, Mrs. Maurice (Wilma) Halstrom of South Sioux City and Mrs. DeHonora (Bernadine) Halstrom of Allen.

Honorary pallbearers were the Local 948 Carpenters Union of Sioux City and Jack Meyer.

Pallbearers were members of the Allen American Legion.

Burial was in the Eastview Cemetery in Allen with Bressler Funeral Home in charge of arrangements.

### Glen Gould

Glen Gould, 62, of Veneta, Ore., died recently.

Services were held Jan. 5 at the Lounsbury Musgrove Funeral Chapel in Eugene, Ore.

Glen Kenneth Gould, son of Arthur and Bertha Gould, was born April 13, 1919, at Newcastle. He was a graduate of Newcastle High School. In 1942 he joined the Marine Corps and served in the South Pacific during WW II. In 1946, he went to Oregon where he has made his home since. He was a member of the Elmira Church of Christ there.

Survivors include his wife, Mary Margaret; one daughter, Mrs. Larry (Susan) Flowers of Elmira; one son, Forrest Gould of Kodiak, Alaska; two step sons, Gary Britton of Portland, Ore., and Sidney Britton of Federal Way, Wash.; one brother, Howard Gould of Laurel; three sisters, Mrs. Delbert (Rose) Rickett of South Sioux City, Mrs. Aubrey (Mildred) Rickett of Ponca and Mrs. Russell (Dorothy) Haring of Sioux City; six grandchildren and several nieces and nephews.

Burial was in Eugene, Ore.

### Alfred Ulrich

Alfred Ulrich, 82, of Birchdale, Minn., formerly of Hoskins died Friday at his home.

Services were held Wednesday at the Congregational Church at Birchdale, Minn. The Rev. Ed Finertie officiated.

Alfred H. Ulrich, the son of Peter Ulrich, Jr., was born Feb. 20, 1899, northeast of Hoskins. He attended Apex School in rural Hoskins, Wayne State College and Lincoln Auto Craft School. He lived in rural Hoskins from 1899 to 1938, in Iowa from 1938 to 1940 and in Birchdale, Minn. since 1940. He married Hattie Roker on Nov. 14, 1923 at Hoskins. He was a member of the Congregational Church in Birchdale, Minn. and a former member of the Hoskins United Methodist Church.

Survivors include one daughter, Mrs. Robert (Doris) Nelson of Birchdale; one son, Duane of Indus, Minn.; four grandchildren; one sister, Mrs. Anna Falk of Hoskins; two brothers, the Rev. Walter Ulrich of New Ulm, Minn., and Erwin Ulrich of Hoskins.

He is also preceded in death by his parents, his wife, one brother and three sisters.

Burial was in the Birchdale Cemetery.

## sheriff's log

The Wayne County Sheriff's Department investigated a car-pickup accident southeast of Wayne Friday afternoon.

According to the department accident reports, the vehicles collided at a county road intersection about 3 miles south and one mile east of Wayne at 1:15 p.m.

A 1973 Chevrolet, driven by Elmer F. Bargholz of Wakefield, collided with a 1976 Chevrolet pickup, driven by Richard A. Koll of Wayne, according to department reports.

The Koll pickup was northbound on the county road and slowed for the stop sign but did not stop, according to the Sheriff's Department.

The Bargholz car, which was westbound, was unable to stop, the report indicates.

Bargholz reported minor bruises.



Nancy Mann

## Homemaker School set for Wayne on Feb. 11

A homemakers school for Northeast Nebraskans has been scheduled for Thursday, Feb. 11, at the Wayne city auditorium.

Cosponsored by The Wayne Herald, Homemakers Schools and Wayne businesses, the event will feature home economist Nancy Mann of Boteman, Mont.

Theme for the Homemakers School is Good Things to You in 82. The session gets underway at 1 p.m. and is open to the public.

WAYNE IS ONE of 300 sites selected in 48 states for the Homemakers Schools schedule.

Madison, Wis., has conducted the homemaker oriented programs for more than 30 years.

New techniques, hints and tips that can be used in homemaking will be featured during the program. Cooking and appliance demonstrations will highlight the show.

In addition, free coupons and product samples, plus a copy of the new 1982 Homemakers School Cookbook, will be given to those attending.

## county court

### FINES

Barry Franzen, Wayne, speeding, \$34; Steve Peterson, Norfolk, speeding, \$75; Marlin Papenhausen, Coleridge, speeding, \$31; Steven Hasler, Sioux City, speeding, \$25 and LeEtta Kell, Wayne, speeding, \$25.

### CRIMINAL DISPOSITIONS

Doug Rewinkel, invalid inspection sticker (2 counts) and willful reckless driving, a misdemeanor, fined \$110.

Gary E. Lee, Winsted, willful reckless driving and possession of marijuana (less than 1 oz.), both misdemeanors, fined \$200.

Angie Kuhl, Wayne, theft by exercising control, sentenced to three days in the Wayne County Jail.

## news briefs

### Free income tax assistance

Free income tax assistance is being offered to many of Nebraska's taxpayers through a program called Volunteer Income Tax Assistance (VITA).

The VITA program is sponsored by the Internal Revenue Service to provide free income tax assistance to Nebraska's low income, elderly, handicapped, and non-English speaking people.

Volunteers are trained by the Internal Revenue Service and the Nebraska Department of Revenue, to prepare the basic 1040, 1040A Federal and state tax returns. They include members of various civic and social action organizations, religious groups, college students, retired professionals and bilingual persons.

Taxpayers seeking help in preparing their Federal or state income tax return should call the Internal Revenue Service for the name and location of an assistance site nearest them.

### Bonus Bucks drawing Thursday

Robert McCord of Allen lost out on \$1,000 in bonus bucks during the Wayne Grand Give A Way contest drawing last Thursday night.

His name was drawn and announced at 8 p.m., but McCord did not identify himself at a participating merchant's store within 60 seconds.

So, the \$1,000 in bonus bucks goes up for grabs again at 8 p.m. this Thursday night.

### Legislative coffeetime

The first in a series of morning coffees designed to acquaint voters with state legislation currently under consideration will be held at the Farm Bureau Office in Allen Friday morning, Jan. 22, at 9 a.m.

The meeting is open to the public.

Those attending will have the opportunity to become aware of current legislation before the unicameral, and to share ideas and concerns regarding legislation.

### Social Security rep coming

Bill Howes of the Norfolk social security office will be in Wayne on Monday, Jan. 25.

Howes will be at the Senior Citizens Center from 9 a.m. to noon.

### Correction

Gene Bigelow will serve as chaplain for the Wayne Lodge 120 AF&AM.

The lodge's new officers were installed Tuesday night at the Masonic Hall.

Information supplied to The Wayne Herald incorrectly identified the chaplain in Monday's edition of the newspaper.

## hospital news

**WAYNE**

ADMISSIONS: Ray Langeimer, Wayne; Valerie Hitchings, Wayne; Julene Hunter, Carroll; Ruby Thielman, Wakefield; Lavan Maciejewski, Wayne; Jeanine Anderson, Laurel; Ruth Reeg, Wayne; Dale Thompson, Wayne.

DISMISSALS: Deb Luhn, Wayne; Mahilda Odegaard, Wayne; Harry Hofeldt, Carroll; Arthur Johnson, Concord; Nellie Forsberg, Laurel; Warren Finn, Wayne; Ray Langemeier, Wayne; Vicky Thies, Winsted; Julene Hunter and baby boy, Carroll; Adolph Kraft, Carroll.

ADMISSIONS: Ludolf Kunz, Wakefield; Clara Roentfeldt, Emerson; Clarence Onderstat, Allen; Mahilda (Tillie) Odegaard, Wayne; Amos J. Johnson, Wakefield; Myrtle Quimby, Wakefield; Richard VonSeggern, Emerson; Jackie Frederickson, Emerson; Alfred Nelson, Wakefield.

DISMISSALS: Myrtle Quimby, Wakefield; Don Peters, Dixon; Jackie Wilkerson, Wakefield; Aubrey Addison, Newcastle; Kyle Nixon, Laurel; Ruth Peters and Brittany Anne, Wakefield; Don Anderson, Concord; Anna Dose, Emerson; Clarence Onderstat, Allen; Jackie Frederickson, Emerson.

## weather

Day	Hi	Low	Snow
Sat	10F	-16F	0.0
	-12C	-27C	
Sun	20F	-10F	0.0
	-7C	-24C	
Mon	34F	20F	0.0
	1C	-7C	
Tues	38F	12F	0.0
	3C	-11C	

Letha DuBois, 9 Grade 3 Winsted Elementary

The National Weather Service forecast is a chance of snow on Friday and partly cloudy skies on Saturday and Sunday. The high temperatures for Friday will be in the teens with a low of 5 to -5.

\* Precip. courtesy of Tri-State Forecasting. \* Temp. courtesy of Energy Systems.

## ARTHRITIS PAIN RELIEF? INCREDIBLE

Mrs. V.K. Roswell, N.M. was introduced to your product in Rhode Island and it alleviated my arthritic joints.

### Why People Are Drinking

# AL-O-JEL™ and

## Getting Unbelievable Results

### Ask Your Pharmacist

AVAILABLE AT THESE LOCATIONS ONLY

<b>WAYNE</b> Sav-Mor Drug 1022 Main Street	<b>PENDER</b> Ken's Rexall Drug 311 Main Street
--	---

## WAYNE DENTAL CLINIC

### S.P. Becker, DDS

Phone 375-2889  
Mineshaft Mall

9 a.m. - 5 p.m. Daily  
Thursday Evening 'till 9:00 p.m.

## THE WAYNE HERALD

Serving Northeast Nebraska's Greatest Farming Area

114 Main Street Wayne, Nebraska 68787 Phone 375-2600

Established in 1875, this newspaper is published semi-weekly, Monday and Thursday, except holidays. The Wayne Herald Publishing Company, Inc., J. Alan Gramer, President, entered in the post office at Wayne, Nebraska 68787. Second class postage paid at Wayne, Nebraska 68787.

**NATIONAL NEWSPAPER**  
PRESIDENTIAL QUALITY  
RRA SUSTAINING MEMBER - 1975

No. 33 Thursday, Jan. 21, 1982

Official Newspaper of the City of Wayne, the County of Wayne and the State of Nebraska

PUBLICATION NUMBER - USPS 670-560

**SUBSCRIPTION RATES**  
In Wayne, Pierce, Cedar, Dixon, Thurston, Cuming, Stanton and Madison Counties, \$10.69 per year, \$11.98 for six months, \$10.16 for three months. Outside counties mentioned, \$17.00 per year, \$14.00 for six months, \$12.00 for three months. Single copies 25 cents.

## police report

Wayne Police have investigated three motor vehicle accidents on city streets since last Thursday.

On Jan. 14, police were called to the scene of a two-car accident at the intersection of Windom and Fifth streets.

About 5:03 p.m., a 1978 Plymouth, driven by Michael A. Palumbo of Wayne, collided with a 1969 Dodge, driven by Amy K. Lampeke of Wayne, according to police reports.

THE PALUMBO car, which was eastbound on Fifth Street, tried to stop at the intersection but couldn't due to icy streets, according to police reports.

Police said the car slid through the intersection and hit the Lampeke auto in the right front fender. No injuries were reported.

POLICE ALSO investigated a two-car accident at 7:45 a.m. Saturday. No details were available.

Later Saturday morning, police received a report that an unknown vehicle hit the east side of the Carhart Lumber building at 105 Main Street.

Police reports indicate several boards were damaged and a small hole was punched in the side of the building.

On Sunday, police investigated

a report in the Maple Street south neighborhood involving a dog caught on a fire hydrant.

THE INVESTIGATING officer reported the dog's chain was caught on the fire hydrant, but the dog would not allow anyone to approach.

The officer reported that neighbors volunteered to find the owner of the dog.

On Tuesday afternoon, police investigated a two-car accident on the city streets. No details were available.

**WATERBED WORLD**  
Truckload  
Jan. 27-28

**SAVE 50% & MORE**

**SALE**  
Amber Inn  
 Hwy 35 E., Wayne, NE

FOX PHOTO COUPON

**Developing & Printing**  
**COLOR PRINT FILM**

12 Exposure Roll	\$2.39
20 Exposure Roll	\$3.89
24 Exposure Roll	\$4.39
36 Exposure Roll	\$5.79
Movie & Slide (20 Exp.)	\$1.39
Slide (36 Exp.)	\$2.49

On any 110, 126 or 35 mm color print roll film.  
(C-41 process only - Includes all popular films.)  
Coupon Expires 1/31/82

**GRIESS REXALL**  
Next to Wellman's IGA PC 581

**REPORT OF CONDITION**  
Consolidating domestic subsidiaries of the  
**FIRST NATIONAL BANK**  
Of Wayne, in the State of Nebraska  
At the Close of Business on December 31, 1981  
Published in Response to Call Made by Comptroller of the Currency Under Title 12, United States Code, Section 141  
Charter Number 3372, National Bank Region Number 10

	Thousands
<b>ASSETS</b>	
Cash and due from depository institutions	1,634
U.S. Treasury securities	999
Obligations of other U.S. Government agencies and corporations	2,035
Obligations of States and political subdivisions in the United States	2,617
All other securities	86
Federal funds sold and securities purchased under agreements to resell	600
Loans, Total (excluding unearned income)	15,217
Less: Allowance for possible loan losses	106
Loans, Net	15,171
Bank premises, furniture and fixtures, and other assets representing bank premises	675
All other assets	323
<b>TOTAL ASSETS</b>	<b>24,140</b>
<b>LIABILITIES</b>	
Demand deposits of individuals, partnerships, and corporations	3,001
Time and savings deposits of individuals, partnerships, and corporations	16,041
Deposits of United States Government	20
Deposits of States and political subdivisions in the United States	2,154
Certified and officers' checks	169
Total Deposits	21,415
Total demand deposits	3,435
Total time and savings deposits	17,980
Federal funds purchased and securities sold under agreements to repurchase	288
Interest-bearing demand notes (note balances) issued to the U.S. Treasury and other liabilities for borrowed money	42
Mortgage indebtedness and liability for capitalized leases	62
All other liabilities	456
<b>TOTAL LIABILITIES (excluding subordinated notes and debentures)</b>	<b>22,263</b>
<b>EQUITY CAPITAL</b>	
Common Stock	600
No. shares authorized - 24,000	
No. shares outstanding - 24,000	
Surplus	600
Undivided profits and reserve for contingencies and other capital reserves	677
<b>TOTAL EQUITY CAPITAL</b>	<b>1,877</b>
<b>TOTAL LIABILITIES AND EQUITY CAPITAL</b>	<b>24,140</b>
<b>MEMORANDA</b>	
Amounts outstanding as of report date:	
Standby letters of credit, total	25
Time certificates of deposit in denominations of \$100,000 or more	2,483
Average for 30 calendar days (or calendar month) ending with report date:	
Total deposits	20,623
Joan Lago, Assl. Vice President, of the above-named bank do hereby declare that this Report of Condition is true and correct to the best of my knowledge and belief.	
Joan Lago January 15, 1982	
We, the undersigned directors attest the correctness of this statement of resources and liabilities. We declare that it has been examined by us, and to the best of our knowledge and belief is true and correct.	
Walter Benhack, Chuck A. Carhart, G. Richard Kelder Directors	

## Trustees hear communications report

A report on College Communications Skills, prepared by faculty at Chadron State, Kearney State, Peru State and Wayne State Colleges, was reviewed by the Nebraska State College Board of Trustees.

The report was presented by Dr. Larry Tangeman, President of Peru State College, showing the four colleges have similar core courses to assess and teach basic reading, writing and speaking skills, but are unique in the

ways they follow and assess the development of these skills through the four years that students attend a college.

**CHAIRMAN Keith Kemper** commented there was good news and bad news in this report.

He said, "The good news is that the colleges have already established sound programs and are doing some rather remarkable things to assess the different communication skills needed in a wide variety of majors.

"The bad news is that there is much more that could be done, but tight budgets are going to make it difficult to implement these ideas."

The Board was told it would help to adjust the student-teacher ratio in core English courses from its present 25 to 1, closer to national standards of 18 to 1.

**TRUSTEE Carroll Thompson** co-sponsored the original study with Education Commissioner Anne Campbell and has been a college faculty member

He said, "I know it's expensive but look at the consequences if we don't spend the money and certify less than top quality graduates."

**FACULTY AND** staff have been examining the area in response to the request of the Board for approximately six months.

Dr. Campbell said, "Now we've just begun to look at this area. The Presidents are going to have

to come back to us with their plans for improving and assessing student communication skills. We'll need to translate those plans into dollars and resources needed.

"It won't be easy but as a Board we have to be dedicated to working with our faculty and staff to make good communication skills better. It appears that our faculty and staff are doing a good job. Now we have to find the resources to let them do it even better."

## Wayne State representing USSR at seminar

Eighteen student representatives from Wayne State College will be in the unlikely situation of representing the Soviet Union in the upcoming "National Model United Nations Seminar" in early April through the WSC Extended Campus division.

This spring will mark the 10th year Wayne State has participated in the seminar, according to class sponsor Allen O'Donnell, assistant professor of political science at WSC.

Over 100 colleges and universities from the United States,

Canada and Mexico will represent countries from throughout the world, O'Donnell said.

**ANYONE WISHING** to take part in the experience can do so. Participants are urged to sign up before the end of February if possible, O'Donnell said.

The first 18 to register will be included on the trip, which will leave Wayne on April 4 and drive to New York City. The group will leave New York on April 11.

The group will meet four or five times prior to departure to study the background of the U.N. and the Soviet Union. The seminar will be held in the U.N. building,

and students will be assigned to various U.N. committees.

**UPON COMPLETION**, participants will be required to present a paper on their experiences.

The course is offered for one to three undergraduate or graduate credit hours. Approximate cost is \$290, which includes in state tuition, lodging and transportation.

In addition to taking part in the simulation of the workings of the United Nations, there will be ample time to take in the sights in New York City, according to O'Donnell. Students can attend Broadway productions, shop, dine in famous restaurants or see

landmarks such as the Empire State building.

Participants will stay in the Grand Hyatt Hotel on 42nd Street in New York, or "the heart of the Big Apple," O'Donnell said.

**FOR FURTHER** information, contact Allen O'Donnell at Wayne State College, Wayne, NE 68787 or call (402) 375-2200, ext. 296. To register, contact O'Donnell or the Extended Campus office at WSC, (402) 375-2200, ext. 217.

## Area Wayne State students named to fall honor roll

Wayne State College recently named students to the fall semester 1981 honor roll.

Wayne State requires a grade average of 3.5 or above to be named to the honor roll.

Students must also have been enrolled for 12 semester hours or more during the semester.

**AREA STUDENTS** earning a place on the fall honor roll include

- Allen — Mary R. Hansen, Sharon Peterson, Nancy A. Bubke, Barton Gotch, Kevin Kraemer, Marsha R. Smith
- Carrau — Paul Roberts, Patricia A. Jenkins
- Concord — Diana L. Thies
- Emerson — Marlan Rhoads, Loretta Klug, Ellen K. Warren

Hoskins — Patricia L. Scheinost, Arlene Gnirk, Francis E. Johnson, Julie L. Lanphear

Laurel — Judi L. Kessinger, Kenneth D. Burns, Susan K. Stark

Pilger — Diane P. Harris, Tom J. Konicek

Wakefield — Heidi M. Munson, Lori A. Meier, Penny L. Roberts

Wayne — Rebecca A. Blenderman, Debra J. Coffey, Jennifer J. DeTurk, Julie A. Ellis, Rhonda R. Ostendorf, Tracey L. Otte, Suzanne M. Platner, Lisa A. Remer, Deena A. Sharer, Tim L. Thomas, Diane M. Blohm, Joyce Evert, Brenda R. Hansen, Diane

Lindsay, Theresa Melena, Douglas J. Rose, Ellen Stottenberg, Julie A. Studnicka, Lesa A. Barclay

Bodenstedt, Carolyn S. Burns, Beth A. Czapryn, Julie D. Goff, Hamel, Neal Greenwald, Laura Lessmann, Lori Lessmann, Ruth A. Macke, Lori E. McClain, Lisa J. Nuss, Alice L. Rokahr, Mary S. Wieberhaus, Lisa A. Bertsch, Chris L. Crowsgrove, Rebecca S. Eickholt, Dennis A. Fieer, Janis Greiner, Laura S. Hagemann, Scott Kent Hall, Gale L. Hansen, Marla Mantey, Ervin L. Robbins, Katherine Ruback, Coleen Vic tor

Winside — Corrinne E. George, David J. Warhemunde

## Planetarium showing

Will a catastrophic chain of events take place on Earth as a result of the "tilting up" of the planets in early 1982?

Though it sounds like—and is—the stuff of which best-selling books are written about, there is some scientific fact involved.

The possibility is investigated in the showing of "Planets of Doom" in the Fred G. Dale Planetarium at Wayne State College.

A RECENT best seller, "The Jupiter Effect," points to 1982 as the year in which the Los Angeles region of the San Andreas fault will be subjected to the most massive earthquake known in the

populated regions of the earth in this century.

"Planets of Doom" investigates the steps in the chain of events in order to determine the credibility of the prediction.

**THE PRESENTATION** begins Sunday, Jan. 24 and runs every Sunday through March 7. "Planets of Doom" begins at 3:30 p.m. and is presented free to the public.

The planetarium is located in the Carhart Science Building on the Wayne State College campus. Special showings for organizations and school groups can be arranged by writing to: Fred G. Dale Planetarium, Wayne State College, Wayne, NE 68787.

## Information processing seminar at Wayne State

The Wayne State College chapters of Phi Omega Pi, national business education honorary, and Phi Beta Lambda, professional business organization will host an Information Processing Seminar on Jan. 26.

It will begin at 12:30 p.m. in the Val Peterson Fine Arts Building on the WSC campus.

**THE SEMINAR** will feature speakers John Coleman, Assistant Vice-President of Management Information Systems at Iowa Beef Processors, Gary

Frampton, President of K & T Enterprises of Sioux City, and Rich Kalaf of IBM.

The seminar will focus on the selection, application, and future implications of both word/data processing and microcomputers.

**THERE ALSO** will be several companies, such as IBM, Lanier, and A.B. Dick, demonstrating word/data processing equipment and microcomputers.

The Information Processing Seminar is free of charge and open to anyone interested.

## Faculty music recital set

Wayne State College music teachers Dr. Jay O'Leary and Dr. Mike Palumbo will present a faculty music recital open to the public on Tuesday, Jan. 26.

The recital will begin at 8 p.m. in Ramsey Theatre of the Val Peterson Fine Arts Center on the WSC campus. Admission is free.

teacher Brad Weber will accompany Dr. O'Leary on percussion during the latter work.

Dr. O'Leary will also play the oboe on a "Concerto for Oboe" by Cimarosa.

**DR. PALUMBO** will be featured on violin for "Sonata for Arpeggione" by Schubert, "Fourth Suite" by Bach, and "Suite Hebraique" by Bloch. Dr. Palumbo is assistant professor of music at Wayne State College.

Also accompanying on piano during the recital will be Arne Sorensen, a Norfolk resident.

This Week's "SPECIALS"

Giacobazzi **LAMBRUSCO** \$2.86

Phillips Canadian **WHISKEY** \$5.63 Liter

Imported Beer from Holland **GROLSCH** 16-Oz. \$1.40 Each

**Raintree** Drive-In Liquor  
5th & Main — Wayne Ph. 375-2090

**SAFETY DEPOSIT BOXES NOW AVAILABLE**

Keep your valuables in one safe place protected from theft or fire, or from being misplaced.

All sizes are now available and rates are competitive. Stop in soon and make your selection.

**Midwest Federal SAVINGS AND LOAN** 4th and Main Wayne

**FSLIC**

The **OHIO NATIONAL** Life Insurance Company

**TAX SAVINGS and RETIREMENT BENEFITS** through **IRA**

It's as simple as ABC.

Individual Retirement Accounts (IRA) are now for everyone with earned income. The Economic Recovery Tax Act of 1981 made it so.

Even if you're already covered by a retirement plan at work, you can still invest up to \$2,000 a year in retirement savings and deduct it from your adjusted gross income for federal income tax purposes. The amount is \$2,250 if your spouse has no earned income.

A few minutes of your time is all that's needed to get full details. Give us a call.

**Tom Anderson**  
Box 565  
Laurel, Neb.  
256-3777

**Thursday Night B B Q Ribs** | **Saturday Night Prime Rib**

**Black Knight** Phone: 375-9968

Monday thru Friday — 11:30 to 1:00  
Evening Dinners  
Monday thru Saturday — 5:00 to 10:30 p.m.  
CLOSED SUNDAY

Be Sure to Stop in Thursday at 8 p.m. for the \$1,000 Give-Away

Starts Friday 7:20 p.m.  
Fri., Sat., Sun. at 7:20 & 9:15  
Matinee 2 p.m. Sat. & Sun.

**Bargain Night Tuesday**

**Wait Disney's Cinderella** TECHNICOLOR

Sorry — No Passes  
Plus! "Madcap Adventures of Mr. Toad"

**Big "I" Sale for Men Only!**

Support your Northeast Nebraska Foodstuffs Association

**Incredible SUIT SALE**  
75 of this Season's Suits!!  
Reg. \$160 to \$185  
**ONLY \$79.82**

**Incomprehensible Value on 60 Pair Of MEN'S PANTS**  
Choose from Solids or Patterns  
Values to \$46  
**NOW \$17.82**

**I Can't Believe It!!!**  
Low, Low Prices On **MEN'S WINTER JACKETS**  
Reduced 1/2 to 1/3 of the original price. **\$49.82 \$39.82**

**DR. PALUMBO** will be featured on violin for "Sonata for Arpeggione" by Schubert, "Fourth Suite" by Bach, and "Suite Hebraique" by Bloch. Dr. Palumbo is assistant professor of music at Wayne State College.

Also accompanying on piano during the recital will be Arne Sorensen, a Norfolk resident.

**3 DAYS ONLY!!**  
Thursday, Friday, Saturday at the **Rusty Nail**

**Buy One, Get One FREE Sale!!**

On all Ladies Sweaters and a select group of Ladies Blouses!  
Buy One item, and get the Second of equal or lesser value FREE.

Plus These Super Buys

- LADIES DRESS SLACKS** 1/2 Price
- LADIES CORDUROYS** Only \$14.82
- ALL LADIES DRESSES** Wawl \$15.82

**3 Days Only!! Thursday, Friday, Saturday, Jan. 21, 22, 23**

The **Rusty Nail** 218 Main (402) 375-3795 Wayne, NE.

Support your Northeast Nebraska Foodstuffs Association



## briefly speaking

### Auxiliary reschedules meeting

The January meeting of the Wayne Community Hospital Auxiliary has been rescheduled for Friday, Jan. 22, at 2 p.m. in the Woman's Club room. Election of officers is on the agenda. The meeting, which was to have been held last Friday, was postponed because of inclement weather.

### Klick and Klatter meets

Klick and Klatter Home Extension Club met Jan. 12 in the home of Mrs. Joe Corbit. Twelve members and a guest, Mrs. Larry Gamble, answered roll call. The meeting opened with the flag salute. Mrs. Earl Larson led the group in singing "Frosty the Snow Man." Mrs. Alvin Meyer, citizenship leader, asked members to be aware of the issues in the spring elections. Mrs. Paul Sievers read an article, entitled "Take a Bow Farm Women," and safety leader Mrs. Harvey Larsen told how to survive in a car during a blizzard. Mrs. Jim Corbit read an article focusing on the mind and physical well being, and Mrs. Erwin Fleer read the poem "A Family." Mrs. Joe Corbit reported on the January council meeting. Mrs. Harvey Beck, Mrs. Marvin Victor, Mrs. Fred Gildersleeve and Mrs. Joe Corbit were appointed to a committee to update the club's bylaws. The hostess gift was won by Mrs. Harvey Larsen. Next meeting will be held in the home of Mrs. Erwin Fleer on Feb. 9.

### Family planning classes

A series of sympto-thermal natural family planning classes will begin at 1:30 p.m. Sunday, Jan. 31, at St. Mary's Catholic Church in Wayne. Classes are held once a month for four months. Natural family planning refers to the practice of planning or spacing pregnancies according to an informed awareness of a woman's fertility. Interested persons are asked to preregister with the Couple to Couple League (CCL), featuring Dr. Henry and Arlene Foxhoven of Coleridge.

### Lutherans observing centennial

The Lutheran Church Missouri Synod will observe the centennial of the organization of its Nebraska District during 1982. Under the theme "Thy Kingdom Come," a year-long observance of the blessings of past, present and future will be promoted through special services and projects. All 242 congregations in the District will be involved in such projects as poster and banner contests as well as in holding special commemorative services. The actual date of the formation of the Nebraska District was June 28, 1882.

### Methodist women soup luncheon

Forty-five members of United Methodist Women and a guest, Mrs. Arthur Dugan, attended a soup luncheon and meeting Jan. 13. Co-chairmen were Helen Rose and Sharon Hansen. Becky Wilson and Jocell Bull conducted the program on the book of Isaiah. A past president's pin was presented to Vida Sutherland, and a special membership pin was given to Kay Marsh. The Treble Clef Singers opened the program with the song "How Long Has It Been," accompanied by Linda Baddorf. Next meeting will be Feb. 10. Serving chairmen will be Terry Headley and Donna Liska. Members will continue the study of the book of Isaiah, and Marg Porter will have devotions.

### Prepared childbirth classes

A series of four prepared childbirth classes is scheduled to begin at 7:30 p.m. Monday, Jan. 25 in Laurel and Tuesday, Jan. 26 in Hartington. The classes are sponsored by Northeast Technical Community College. The aim of prepared childbirth is to make childbirth a positive, controllable experience. Exercises, relaxation and breathing techniques are taught. Contact Mrs. Brad Harder, Laurel, for details.

### Potluck at Perrys

That Club met in the home of Marian Perry last Thursday evening for a potluck dinner. Nine members and six guests attended. Lynal Franzen became a new member of the club. Plans were made for programs for the next six months, and names were drawn for secret Valentine sisters. Door prizes went to Barbara Meyer and Doris Meyer. Next meeting will be Feb. 16 in the home of Vickie Skokan.

### La Leche League meeting

All interested mothers and tots are invited to the LaVerte Helmes home northeast of Hartington on Tuesday, Jan. 26, for a morning meeting, potluck luncheon, and afternoon discussion. At 10 a.m., La Leche League meeting one will focus on the advantages of breastfeeding to mother, baby, and family. La Leche League provides mother-to-mother information and support to mothers who choose to breastfeed their babies. The 1 p.m. discussion, "Easy Ways of Teaching Toddlers," will be led by Adrienne Weier. Interested mothers are invited to attend either or both free discussions.

### Gardeners plan yearbook

Mrs. Les Youngmeyer was hostess for last Thursday afternoon's meeting of Roving Gardeners Club. Nine members answered roll call by showing or telling of a winter project they have been working on. Plans were made for the 1982 yearbook, and new names were drawn for secret sisters in 1982. Mrs. Allen Spittiger will be the Feb. 11 hostess at 2 p.m.

# Dixon County history deadline nears

Persons interested in writing a history of their family or organization for the new Dixon County history book, "Footprints in Time," are invited to attend a free workshop to be held Saturday, Jan. 23, at the Senior Center in Concord. The workshop will be held on a come and go basis from 1 to 4 p.m. Ideas of possible data to be included in the stories will be shared. The workshop was postponed from Jan. 5.

THE WORKSHOP will be conducted by Marlys Rice of Concord, 584 2407, and the Clifford Fredricksons of Wakefield, 584 2548.

Any questions regarding the workshop may be directed to them. Stories already written may also be turned in to them. Deadline to submit stories is Jan. 31.

THEME OF the order blank for the new Dixon County history is "Leave Your Thumbprint in Time."

The Dixon County history book committee invites each family, all towns, schools, churches, organizations, 4-H clubs and others who currently reside or have resided in Dixon County to "leave their thumbprint in time." Each family or organization

may submit their story and one picture free of charge.

THE DIXON County Historical Society is sponsoring the compiling and publishing of the history book.

The book will consist of family stories plus histories on the county, communities, townships, churches, schools and more.

Family stories submitted for publication should be 500 words or less, double spaced and typed if possible.

Those submitting a family story may also submit one or two photographs (current or historical). At least one

photograph will be used from every family, and more will be used if space allows.

The committee said photographs will be handled many times and suggests that photo-copies of irreplaceable photographs be submitted. There is no fee for having a family story and one photograph published in the book.

THE HISTORY of Dixon County, a limited edition, will be 8 1/2 x 11, bound in hardback leatherette with a gold stamped cover.

The history will contain information from the early 1900's to the present with approximately

280-480 pages depending upon the number of biographies received and books ordered.

A spokesman for the committee said the purpose in writing the history of Dixon County is to preserve historical records for the education and enjoyment of future generations. Only the number of books ordered will be printed.

CO-CHAIRMAN OF the project are Marvin Green and Rosemary Page. Publicity chairman is Bernice Loetscher.

Township community coordinators are Clifford Fredrickson, Logan; Marlys Rice, Concord; Hazel Blat-

chford, Clark and Dally; Mrs. Francis Church, Hooker; Mrs. Gene Fluent, Newcastle; Mrs.

Giles Wilbur, Silver Creek; Arlene Schultz, Galena (North of Highway 20); Helen Pearson, Galena (South of Highway 20); Faith Kell, Spring Bank;

Harold and Doloris Johnson, Wakefield; Bernice Loetscher, Emerson; Rosemary Page, Otter Creek; and Neva Townsend, Ponca.

Dixon County Historical Society officers are Marvin Green, president; Muriel Noe, secretary; and Chester Benton, treasurer.

# Norfolk church scene of Thomas-Paustian wedding

Mount Olive Lutheran Church, Norfolk, was the setting for the Jan. 16 double ring ceremony uniting in marriage Tammy Thomas and Ernie Paustian. Officiating at the 2 o'clock rites was the Rev. Arnold Krueger of Norfolk. Decorations included a spiral candelabra and two altar bouquets of carnations and daisies. The bride is the daughter of Robert Thomas of Hoskins. Parents of the bridegroom are Mr. and Mrs. Carl Paustian of Carroll.

LAURIE GALLOP of Winside and Sue Meierhenry of Hoskins registered the guests, who were ushered into the church by Kevin Davis and Todd Jenkins, both of Carroll. LaVerle Miller and Mike Lange, both of Hoskins, and Randy Willis of Winside. Topping the gowns were chiffon peplum style jackets with self color Venice lace trim at the round necklines and cap sleeves. Each carried a colonial bouquet of roses and baby's breath with a ruffle of ivory lace.

GIVEN IN marriage by her father, the bride appeared in a gown of white organza over angel mist tulle. The bride's full length Chantilly lace edged veil was held in place by a Camelot cap of the same lace and sprinkles of pearls.

A cathedral train accented by a lace inset completed the gown. The bride's full length Chantilly lace edged veil was held in place by a Camelot cap of the same lace and sprinkles of pearls. She carried a cascade of dusty roses, stephanotis and almond blossoms accented with ribbon.

MAID OF honor was Marcie Thomas of Norfolk, sister of the bride, and bridesmaids were Darla Janke of Winside, Kathy Miller of Hoskins, also a sister of the bride, Deb Woslager of Norfolk, and Connie Willis of Winside. Their two-piece gowns were of rose insets knit and featured crisscross bodices held by spaghetti straps. Natural washlines enhanced the A-line side split skirts.

TRAIN CARRIER was Melissa Fulton of Norfolk. Flower girl was Trisha Fulton of Norfolk, and ring bearer was Jason Topp of Wayne. The bride's personal attendant was her sister, Cindy Krause. Larry and Michelle Parker distributed programs.

GREG JENKINS of Carroll served as best man. Groomsmen were Richard Krause of Hoskins, Rick Davis of Carroll, Bill Thomas of Hoskins, brother of the bride, and Mike Paustian of Carroll, brother of the bridegroom.

The bridegroom was attired in a white cutaway tuxedo with a white shirt and white ascot tie. His attendants wore gray tuxedos with white shirts and striped ascot ties.

A RECEPTION and dance were held at the Carroll auditorium following the ceremony. Hosts were Mr. and Mrs. Dan Fulton of Norfolk and Mr. and Mrs. Terry Davis of Carroll.

Gifts were arranged by Kathy Thies of Norfolk and Shellie Topp of Wayne.

The wedding cake was cut and served by Emelie Reeg and Janet Reeg, both of Wayne. Connie Bailey of Norfolk and Nancy



Mr. and Mrs. Ernie Paustian

Davis of Carroll poured, and Joni Jaeger and June Topp of Winside served punch.

WAITRESSES were Pam Peter of Hoskins, Angela Fork and Susie Peterson, both of Carroll, Karlene Benschot and Lori Schrant, both of Winside, and Karen Reeg of Wayne.

Assisting in the kitchen were Leona Fork and Lucille Nelson of Carroll, Lou Deck and Pat Meierhenry of Hoskins, Daisy

Janke of Winside, and Irene Temme and Janet Reeg of Wayne.

THE NEWLYWEDS are at home at Carroll, where the bridegroom is engaged in farming.

The bride is a 1981 graduate of Winside High School and was employed at the Ceramic Hut in Norfolk. The bridegroom attended Wayne-Carroll High School.

# Lutheran Ladies install officers

New officers of Grace Lutheran Ladies Aid were installed Jan. 13. Millie Thomsen is the new president.

Other officers are Joann Temme, first vice president; Betty Wittig, second vice president; Ruth Victor, secretary; Leora Austin, treasurer; and Betty Wittig and Joann Temme, Christian growth committee.

The Rev. Jon Vogel conducted the installation service and had the topic from the Quarterly, entitled "Tribulations."

HOSTESSES FOR the January meeting were Sally Lubberstedt, Karen Mendenhall and Ardene Nelson.

Forty-one members were present. Guests were Alma Weierhauser and Bernice Rewinkle. New yearbooks were distributed following opening devotions.

STATISTICS FOR 1981 and the annual treasurer's report were given. Reports also were given by various committees.

Adeline Sieger of the shut-in committee reported 19 plates of cookies were delivered to shut-ins at Christmas time. Elsie Sajn reported on Christmas gifts purchased by the Aid for two residents of Wayne Care Centre.

Leora Austin is chairman of the next group to visit the Centre. New on the visiting committee are Eleanor Heithold, Leona Janke and Bonnadell Koch. Esther Ekberg reported serving 18 persons at the Pastoral Conference on Jan. 6.

A LETTER was read from Mark Jaus, a student at the St. Louis Seminary. The Aid is remembering Jaus each month with a letter and a monetary gift. It was announced World Relief Sewing will be held at 1:30 p.m. on Jan. 28. All women of the congregation are invited to help sew. Birthday money will again be sent to the Bethesda Cheer Fund.

HOSTESSES for the Feb. 10 meeting will be Roberta Oswald, Jean Pennerick and Agnes Pfla.

# bridal showers

## Tess Sturges

A miscellaneous bridal shower was held Sunday afternoon in the home of Janet Peterson, Allen.

Guest of honor was Tess Sturges, who will become the bride of Jeff Olerick of Emerson on Feb. 6 at the Sacred Heart Church in Emerson.

Shower decorations were in the bride's chosen colors of lavender and white. Several games were played by the 20 guests in attendance.

Co-hosting the event were Eva Durant, Tanya Hanson, Shelly Hingst and Darlene Fahrenholz.

## Sonya Ellis

Sonya Ellis of Allen was guest of honor at a bridal shower held Sunday evening at the First Lutheran Church in Allen.

Thirty-five guests attended, and decorations were in the bride's chosen colors of blue and ivory. "Pearl Snyder" was in charge of the entertainment. Sandy Chase, poured; and Stella Schroeder, served punch. Other hostesses were Rowena Ellis, Joanne Meier and Peggy Ping. Send Ver Mulm assisted the honoree with her gifts.

Mrs. Ellis will become the bride of Ron Ver Mulm of Rock Valley, Iowa on Feb. 5 at the First Lutheran Church in Allen.

# community calendar

- THURSDAY, JANUARY 21  
Immanuel Lutheran Ladies Aid
- FRIDAY, JANUARY 22  
Wayne Community Hospital Auxiliary, Woman's Club room, 2 p.m.
- MONDAY, JANUARY 25  
Minerva Club, Marvel Corbit, 2 p.m.  
Community Advisory Council, Wayne Middle School library, 7:30 p.m.  
Wayne Alcoholics Anonymous, Campus Ministry basement, 8 p.m.
- TUESDAY, JANUARY 26  
Villa Wayne Tenants Club weekly meeting, 2 p.m.  
JE Club, Irene Reibold, 2 p.m.
- WEDNESDAY, JANUARY 27  
Villa Wayne Bible study, 10 a.m.  
St. Paul's Lutheran Churchwomen, 2 p.m.  
Tops Club, West Elementary School, 7 p.m.  
Wayne Alcoholics Anonymous and Al anon, Fire Hall, second floor, 8 p.m.

# Wakefield alumni banquet scheduled

The Wakefield Alumni Association planning committee met this month and set Saturday, July 3, as the date for an alumni banquet. Letters will be mailed to all Wakefield High School graduates on March 1.

President of the Wakefield Alumni Association is Marcia Kratke. Other officers are Mrs. Harold Fischer, vice president; Mrs. Francis Muller, secretary; and Lowell Johnson, treasurer.

MEMBERS OF the planning committee for the alumni banquet are Mr. and Mrs. Merlin Greve, Mr. and Mrs. Bud Simp-

son, Mr. and Mrs. Gene Brown, Mr. and Mrs. Ray Lund, Mr. and Mrs. LeVern Lundahl, Mr. and Mrs. Greg Simpson, Mr. and Mrs. Bill McQuistan, Mr. and Mrs. Tony Peters, Mr. and Mrs. Dennis Carlson, Sharon Crossdale, Mr. and Mrs. Merlin Schulz, Mr. and Mrs. Kenneth Thomsen, Mr. and Mrs. Dennis Fredrickson, Mr. and Mrs. Aiden Johnson, and Mr. and Mrs. Weldon Schwartz.

# OES conducts open installation service

Wayne chapter 194 Order of the Eastern Star conducted open installation services on Jan. 11 at the Masonic Temple. Arnold Emery seated the 40 members and guests.

Installing officers Abigail Back and Marie Hansen were assisted by Hulda Turner, installing marshal, Joan Marr, installing chaplain, and Dorothy Rees, installing organist.

INSTALLED FOR 1982 were Jan Kohl, worthy matron; Jerald Kohl, worthy patron; Ruth Grone, associate matron; Bob Carhart, associate patron; Pauline Merchant, secretary; Bonnie Lund, treasurer; Sandra Emry, conductress; Linda Teach, associate conductress; and Shirley Fletcher, chaplain; Adeline-Vakoc, marshal; Trixie

Refreshments were served by Virginia Preston and her committee. THE EVENING program was highlighted with piano selections by Shelley Emry of Wayne and a duet, "L'WILL Lift Up Mine Eyes," sung by Margaret Masny and Nancy Woppel, accompanied by Dorothy Spangenberg, all of Stanton.

# Obstetrics workshop scheduled at NTCC

An Obstetrics Workshop for RN's and LPN's in northeast Nebraska will be presented by Northeast Technical Community College (NTCC) from 8 a.m. to 4 p.m. on Thursday, Jan. 28, in the Community Services room at the college.

The workshop is primarily for nursing personnel who work with obstetrical patients and will cover the complications of pregnancy, labor, and delivery; fetal monitoring; and amniocentesis and ultrasound. INSTRUCTORS will be Dr. Charles Field, Professor of Obstetrics and Gynecology at the University of Nebraska Medical Center, and Cecilia Olsan, Obstetrics Consultant in the Maternal and Child Health Division of the Nebraska State Health Department. COST OF the workshop is \$7 and preregistration is required by Jan. 25. Interested participants may call Jean Wubben, Allied Health Coordinator at NTCC, 291-2880.

## George Reuters celebrate 50th wedding anniversary

The golden wedding anniversary of George and Cleo Reuter of Wayne was celebrated Sunday, Jan. 10, at Grace Lutheran Church in Wayne.

Relatives and friends attending the open house reception came from Sioux City, Iowa; Denver, Colo.; South Sioux City, Fairfield, Allen, Wakefield, Laurel, Carroll, Silver Creek, Columbus, Norfolk and Wayne.

Among those attending was Alice Steele of Allen, an attendant at the couple's wedding 50 years ago.

HOSTS WERE the couple's son and family, Neal and Betty

Reuter of Denver, Colo., and sons William, Terry and Jerry; and Ed and Dorothy Grone of Wayne, nephew and niece of the honored couple.

The guests were registered by Terry Reuter and Coleen Wall, both of Denver.

Irene Geewe and Terri Reynolds of Wayne arranged gifts.

NEAL REUTER was master of ceremonies for the afternoon program. He welcomed the guests and introduced his family as well as sisters and brother of the couple.

Jim and Rhonda Johanson of

Fairfield sang "Always" and "The Lord Is My Shepherd," accompanied at the piano by Brad Eddie of Wayne.

A reading, "Fifty Years Ago," written by Lella Skinner of Mitchell, was read by Roberta Lute of Laurel.

The program also included a recitation by Becky Hansen of Silver Creek. The Rev. Thomas Mendenhall had devotions and prayer.

THE ANNIVERSARY cake, baked by Irene Terhme of Wayne, was cut and served by Judy Weiser of Columbus, Roberta Lute of Laurel, Verna Mae Baier

of Wayne, and Rhonda Johanson of Fairfield.

Dora Claussen of Wayne and Florence Lute of Laurel poured. Punch was served by Lisa Brandt and Carolyn Burns of Wayne.

Walters were William and Jerry Reuter of Denver, and women assisting in the kitchen were members of Grace Lutheran Ladies Aid.

GEORGE AND Cleo Reuter were married at Wayne on Jan. 6, 1932.

They farmed in the Laurel and Wayne areas until 1956 when they moved into Wayne at 1205 Pearl St., where they still reside.

## engagements



**Bostic-Reinhard**

Making plans for an April 10 wedding at Benson Presbyterian Church in Omaha are Vicki Bostic of Wayne and Tony Reinhard of Omaha.

The bride is the daughter of Mrs. Myrtle Bostic of Omaha and the late M. Sgt. W. P. Bostic. Parents of the bridegroom are Mr. and Mrs. Donald Reinhard of Callaway.

The bride, a 1978 graduate of Omaha Benson High School, plans to graduate in May from Wayne State College, where she is affiliated with Alpha Theta chapter of Chi Omega and the Wayne State Educators Association of Nebraska.

Her fiancé was graduated from Callaway High School in 1977. He attended Wayne State College, where he was affiliated with Alpha Beta Sigma Fraternity and Collegiate 4-H, and is presently employed as a sales trainee at U.S. Supply Co., Omaha.

Their engagement has been announced by the bride's mother.

## Yearly report given at Grace Evening Circle

The LWML Evening Circle met at Grace Lutheran Church Tuesday evening, Jan. 12, with president Janet Casey conducting the meeting.

Lorraine Johnson read the opening devotions. Sixteen members were present. Committee reports were given.

Twila Walters reported she and Orvella Blomkamp sent 76 birthday cards to the Wayne Care Centre, 17 baby cards, four sympathy cards, five get well cards, three gifts to LWML members who were ill, and purchased three Christmas gifts during the year.

IT WAS announced that Orvella Blomkamp is a patient in St. Luke's Hospital, Sioux City.

Marilyn Rethwisch gave the library board report and told of the need for new card files.

Mary Lou Erlexben, Christian growth chairman, read "Meditation on the New Year" and "Snowtime is Growtime."

THE YEARLY mission project will be to sponsor Sharon Poellot who works with the KRW Translators in Monrovia, Liberia, West Africa.

The Rev. Jon Vogel gave the lesson on "Tribulation," taken from the winter Quarterly.

Hostesses were Marcella Suehl and Mardella Bebee.

Next meeting is Feb. 9.

## America's Miss Charm entries being sought

America's Miss Charm National Scholarship Pageant is looking for girls all across the state to represent their city or county at the upcoming national finals.

A girl in each of the five age divisions will be selected to represent their city or county.

Little Miss (ages 4-6); Miss Ideal (7-9); Junior Miss (10-12); Teen (13-16); and Miss (17-25).

EACH YOUNG woman will compete in a private interview, talent, evening gown and sports wear.

Over \$20,000 in cash scholarships, prizes and awards will be presented throughout the finals.

As a Youth Development Program in its fourth year, it encourages community and state participation through civic and social organizations by giving of their time and talents to charitable functions.

America's Miss Charm Nationals are presented to award scholarships, bring outstanding recognition to all participants, and to bring cities, counties and states closer together.

Each representative will be officially crowned and presented a trophy of the National Finals for her participation.

Mail a long, stamped, self-addressed envelope for more details to: America's Miss Charm, P.O. Box 7246, Jacksonville, N. C., 28540, or telephone 919-455-0038.

## Community Advisory Council encourages public involvement

The Community Advisory Council will hold its second meeting of the year on Monday, Jan. 25, at 7:30 p.m. in the Wayne Middle School library.

The council continues to work as the official link between the community, parents, and school system through the functioning subcommittees.

The steering committee encourages all parents and other concerned community members to become involved in the Community Advisory Council

THE SUBCOMMITTEES which will be meeting Monday evening include:

Special Needs — Ongoing support for Project Success, Predict and Prevent, and programs for the educable and trainable mentally handicapped (EMH and TMH)

Special Talents — A film entitled "Children of Promise" will be viewed by the subcommittee. The film was developed by the Iowa

Department of Education and is an overview of gifted education.

IN THE FILM, the various aspects of giftedness are described in interviews with teachers and administrators.

Children involved in programs and special projects are filmed during their participation.

The upcoming annual state convention of the National Association for the Gifted (NAG) also will be discussed at Monday's Special Talents subcommittee meeting.

THE OTHER subcommittee scheduled to meet Monday evening is:

Title I — This subcommittee will discuss ways to work with anticipated budget cuts in the Elementary and Middle Schools.

THE FINAL meeting of the year for the Community Advisory Council will be March 29 at 7:30 p.m. in the Wayne High School library.

## Auxiliary members meet at Wayne Vets Club room

The American Legion Auxiliary met Jan. 4 at the Vets Club with president Helen Sietken. Eleven members attended.

The colors were advanced by sergeant at arms Marguerite Hofeldt and Emma Soules

Chaplain Mary Kruger gave the New Years prayer, followed with the flag salute and singing of "The Star Spangled Banner"

A Christmas card and letter were received from District III president Laura Tipperly. In the letter, Mrs. Tipperly announced the District III Convention is scheduled March 27 at Wakefield.

A Christmas card and letter also were received from auxiliary member Ruth Ellis, who is a resident of the Wakefield Health Care Center.

ATTENDING THE Norfolk Veterans Christmas party Dec. 18 from Wayne were Mary Kruger, Emma Soules, Eveline Thompson, Mr. and Mrs. Chris Bargholz and Harold Thompson.

The Midwinter Conference Jan. 8-10 in York was attended by Eveline and Harold Thompson.

CHAPLAIN MARY Kruger closed with a prayer for peace, followed with the singing of "America," accompanied by Alma Spillinger.

Serving were Shirley Tietgen, Francis Doring and Helen Sommerfeld.

Next meeting is Feb. 1 at 8 p.m. at the Vets Club.

## Muser-Dolph repeat vows

Susan Muser and Ken Dolph, both of Salt Lake City, Utah, were united in marriage Dec. 12 at Clara Lutheran Church near Erwin, S. D.

Parents of the couple are Mr. and Mrs. Lyle Muser of Erwin and Mr. and Mrs. Donald Dolph of Wakefield.

The bride is employed at the LDS Hospital and the bridegroom is employed at the Hercules Incorporated Aerospace Division in Salt Lake City. They are at home at 3772 S. 900 East No. 60, Salt Lake City.

MEMBERSHIP chairman Eveline Thompson reported there are 82 paidup members.

Letters included current information on all of the auxiliary's program

A letter from Department Americanism chairman Jane Pederson announced that the American Youth Conference will be held April 1-4 at Valley Forge, Penn., and that the Freedom Foundation Seminars for teachers will be held at Valley Forge on July 4 through Aug. 27.

Department energy conservation chairman Loretta Armbruster asked auxiliary members in a letter to practice the three R's — recycle, restore and renew.

IT WAS announced the American Legion Auxiliary state bowling tournament is Feb. 27-28 and March 6-28 at the Hollywood Bowl in Lincoln.

## new arrivals

DROESCHER — Mr. and Mrs. Lee Droeschler, Norfolk, a daughter, Amanda Marie, 6 lbs., 8 oz., Jan. 12, Lutheran Community Hospital, Norfolk. Grandparents are Mr. and Mrs. Alvin Wagner, Hoskins, and Mr. and Mrs. Leo Droeschler, Norfolk. Great grandmother is Mrs. Marie Wagner, Hoskins.

HITCHINGS — Mr. and Mrs. Michael Hitchings, Wayne, a daughter, Kristine Nicole Dorothea, 8 lbs., 9 oz., Jan. 14, Providence Medical Center.

HUNTER — Mr. and Mrs. Donald Hunter, Carroll, a son, Tait Edwin, 6 lbs., 11 3/4 oz., Jan. 14, Providence Medical Center.

**You Are invited to see our wide selection of wedding stationery and accessories.**

Wedding Invitations, Napkins, Guest Books, and Thank You Notes in the latest styles.

THE WAYNE HERALD

**ENGAGEMENT DANCE**

Honoring Tom Anderson and LaVon Beckman

Saturday, January 30 Wakefield Legion Hall 8 p.m.

All Friends and Relatives of the Couple Invited

STRETCH YOUR **DOLLAR**

Read The Ads In The Wayne Herald

**You Will Love Gerald's**

**CARPET SALE PRICES**

Carpet To Your Heart's Content!!

**CALLAWAY CARPETS**

BAR HARBOR — Reg. \$13.95 **\$10.25** SALE sq. yd.

ESPECIALLY YOURS — Reg. \$24.25 **\$15.95** SALE sq. yd.

RARE EXISTENCE and EXQUISITE LIVING — Reg. \$23.95 **\$17.95** SALE sq. yd.

ROYAL ISLE — Reg. \$17.50 **\$13.50** SALE sq. yd.

And, for a real Sweetheart of a deal, check our in-stock carpet prices.

RUBBERBACKED **\$5.95** ONLY sq. yd.

KANGABACK CARPET **\$9.95** ONLY sq. yd.

Take These Home — And Install Them Yourself

**Gerald's Decorating Center**

210 Main Wayne 473-2150

**WEIGHT WATCHERS**

**Money in the Bank PROGRAM**

SAVE UP TO \$2400

LOSE THOSE EXTRA POUNDS

Here's How It Works

1. Bring the coupon from this ad to your first Weight Watchers class and you'll get \$400 off your first monthly membership fee.

2. You will also receive a "MONEY IN THE BANK" Passbook and find out how to turn class attendance into a \$2400 savings on fees.

**\$400 OFF**

WAYNE Montgomery Ward Basement 215 Main Street Wednesday - 7 p.m.

Call for full class details: 402-375-1804

Weight Watchers and Money in the Bank are registered trademarks of Weight Watchers International, Inc., Marsden, N.Y. Weight Watchers International - 1977

**GOLD RUSH**

Gold Nugget

Bring in your scrap gold (old rings, etc.) and Randy at the Diamond Center will create for you a unique —one of a kind — "GOLD NUGGET." The Diamond Center also has gold available.

Gold Nuggets make great pendants, tie tacs and earring jackets. Yours can be especially attractive set with diamonds or any stone of your choice.

**The Diamond Center**

211 MAIN PHONE 402-375-1804 WAYNE, NEBRASKA 68767





## Allen girls turn back Winside

The Williams sisters teamed up with Michelle Harder to lead Allen to a 44-31 win over Winside Monday night in Winside.

Des Williams scored 14 points, Shelly Williams scored 12 and Harder scored 11 for the winners. Winside was led by Darla Janke with 12 points.

The first and third quarters decided the outcome of the game. The Eagles outscored the Wildcats 12-4 in the first period and 9-4 in the third. Allen held a two-point edge in the second quarter and the fourth quarter was even.

Shelly and Des played pretty well. But, Winside did a pretty good job overall," said Allen coach Gary Troth. "We turned

the ball over a few times more than we thought we should."

Winside coach Kathy O'Connor was satisfied with her team's performance. "I am very pleased. We played well against a good team," said O'Connor.

Allen was tied in rebounding by Janet Peterson with 14. Jani Jaeger pulled down 10 rebounds for Winside and Lisa Jensen led the Wildcats with seven assists.

The win improved Allen's record to 8-1. The Eagles will take their eighth game winning streak into action tomorrow (Friday) against Class D's sixth rated Walthill in a girls-boys doubleheader at Walthill. Allen is scheduled to play Bancroft at 6:30 p.m. Saturday in the Lewis & Clark Conference Tournament at

Ponca. Winside fell to 3-4 with the loss and will play at Wausa Friday in a girls-boys doubleheader. The Wildcats are scheduled to face Osmond at 5 p.m. Saturday in the Lewis & Clark Tournament at Wynot.

In reserve action Monday, Allen topped Winside 25-20. Allen scoring: Deanna Hansen 8, Shelly Boyle 5, Tami Jewell 4, Julie Book 3, Mary Oswald 2, Pam Kavanaugh 2, Pam Heckathorn 1. Winside scoring: Shelli Topp 8, Pam Frevert 6, Pam Peter 2, Leah Jensen 2, Cheryl Rohde 2.

Allen 12 12 9 11-44  
Winside 6 10 4 11-31

WINSIDE	FG	FT	F	TP
J. Jaeger	3	1-3	1	7
D. Janke	5	2-2	2	12
K. Frederick	0	0-0	4	0
L. Jensen	0	0-0	1	0
K. Leighton	1	0-0	3	2
K. Benschop	1	4-8	2	6
P. Frevert	1	1-2	0	3
P. Peter	0	0-0	1	0
S. Topp	0	1-2	0	1
Totals	11	9-17	14	31
ALLEN	FG	FT	F	TP
D. Williams	7	0-0	3	14
J. Peterson	2	0-1	2	4
B. Stalling	0	2-6	1	2
M. Harder	4	3-5	4	11
S. Williams	5	2-4	3	12
T. Jewell	0	0-0	2	0
P. Kavanaugh	0	0-0	1	0
M. Pettit	0	1-2	0	1
J. Warner	0	0-0	1	0
Totals	18	8-18	17	44

## Eagles win 7th straight

An offensive explosion by sophomore Shelly Williams helped Allen's girls whip Winnebago 77-41 last Thursday night in Allen.

Williams hit 12 field goals and a career high 25 points to lead the Eagles. Beth Stalling also scored in double figures with 10 points.

Shelly shot the ball well from the 10 to 12 foot range. She played with a lot of confidence and did a good job," Allen coach Gary Troth said. "We pressed some and they had trouble handling the press."

The Eagles wasted no time tak-

ing control of the game by jumping out to a 25-4 first quarter advantage. Allen outscored Winnebago in each quarter.

In addition to Williams' 25 points and Stalling's 10, Michelle Harder scored eight points, Des Williams scored seven, Janet Peterson scored seven and led the team with nine rebounds and Tami Jewell scored six points.

Troth reported that he was able to use his substitutes early and shuffled players in and out throughout the game. Eleven players scored. The win upped Allen's record to 7-1.

According to Troth, Winnebago has a couple of good basketball players on the team. One is Jenny Parker who scored 19 points.

Allen won the junior varsity game 35-21 to improve its record to 4-1. Winnebago, with only nine players on its roster, played its varsity in the second quarter but Allen held the visitors to only three points in that period.

Leading scorers for the winners were Jeanne Warner with 15 points, Deanna Hansen with 8 and Michelle Pettit with 6.

Winnebago 6 14 10 11-41  
Allen 25 19 20 13-77

ALLEN	FG	FT	F	TP
D. Williams	3	1-2	2	7
J. Peterson	2	1-3	2	7
B. Stalling	4	2-2	10	8
M. Harder	4	0-0	3	8
S. Williams	12	1-1	25	11
T. Jewell	3	0-2	0	6
L. Hansen	2	0-0	1	4
P. Kavanaugh	0	1-2	0	1
M. Pettit	1	1-4	0	3
J. Warner	2	0-0	4	4
D. Hansen	0	0-0	0	0
J. Book	1	0-0	0	2
Totals	35	7-16	11	77
Winnebago	19	3-8	14	41

### Losses in CSIC

## WSC plays its best games; loses pair

The Wayne State Wildcats put together their best two basketball games of the 1981-82 season last weekend, but picked the wrong place to do it on the road in the home dominated Central States Intercollegiate Conference.

As a result, victories eluded the improving Wildcats of Coach Rick Weaver as Pittsburg State downed the Cats 62-61 on Friday and defending league champion Missouri Southern took an 83-76 decision on Saturday.

The losses left Wayne State at 9-9 just past the midway point of

the season. The Cats are looking forward to this weekend's home matches with conference foes Washburn University on Friday and Emporia State on Saturday, after a Wednesday date with the Doane Tigers at Crete. Wayne State has had just five home dates in their first 18 games.

Mo. Southern 83, Wayne State 76. A late rally by Wayne State almost boosted the Cats to a stunning upset, but it was not to be as late Missouri Southern free throws turned the Cats back.

83-76.

Trailing 77-67 with three and a half minutes to play, Wayne State roared back to a 79-74 deficit. Then, with 53 to play, junior forward Grady Hansen hit a shot and was fouled, giving the Cats a chance to close within two. But Hansen's free throw missed its mark and WSC was forced to foul in an effort to stop the clock.

Southern converted on four charity losses in the last 12 seconds to give the Lions a win and improve their mark to 10-7. Hansen had 27 points to lead five

Cats in double figures. Carl Tyler had 27 for Southern.

Wayne State 42 34 76  
Mo. Southern 41 42 83

WSC	FG	FT	F	TP
Grady Hansen	13	1-4	1	27
Brad Edwards	6	0-0	1	12
Brian Platt	5	2-2	4	12
Al Jones	4	3-5	4	11
Russ Uhing	5	0-0	10	10
Cedric Edwards	2	0-0	2	4
Jim Reinders	0	0-0	1	0
Loneil Greene	0	0-0	0	0
Dana Childs	0	0-0	0	0
Totals	35	6-11	16	76

### .500 record

## Southern slaps loss on Lady Cats

The Lady Wildcat basketball team at Wayne State College ran into some tough competition over the weekend and dropped a pair of Central States Intercollegiate Conference games on the road.

Coach Jan Jirsa's cagers had to take a 7-7 record and a four game losing streak in to Tuesday night's home encounter with the powerful Lady Mavericks of the University of Nebraska-Omaha. Wayne State then plays host to CSIC opponents Washburn and Emporia State on Friday and Saturday.

Mo. Southern 64, Wayne State 46

Missouri Southern used a strong inside

game and a frigid shooting first half by Wayne State to score an easy 64-46 win in Joplin on Saturday.

Wayne State trailed 30-16 at halftime and the outcome was already decided. Wayne State shot an anemic 23 percent in the opening 20 minutes.

Jackie Schimonitz paced the scoring at lack with 12 points along with nine rebounds. Sophomore center Sue Juhlin (Battle Creek) came off the bench and drilled 10 points for her best effort of the year. Sophomore center Robbie Lehr was shut out of the scoring column but snared 16 rebounds.

Wayne State 16 30 46  
Missouri Southern 30 34 64

WSC	FG	FT	T	TP
Jackie Schimonitz	6	0-1	4	12
Sue Juhlin	5	0-0	1	10
Maggie Alberts	4	0-1	3	8
Tammy Blackburn	2	3-4	7	7
Patly Carney	2	0-2	4	4
Carol Durkee	1	1-2	3	3
Marie Dunning	1	0-0	2	2
Janet Lee	0	0-0	0	0
Robbie Lehr	0	0-1	4	0
Cindy Gessman	0	0-1	0	0
Totals	21	4-12	17	46

## 28 teams prepare for L & C Tourney

Pairings for the Lewis & Clark Conference basketball tournament have been drawn. The tourney will begin with girls action on Saturday and boys competition on Monday.

Seven teams will vie for the team title in the Clark boys, Clark girls, Lewis boys and Lewis girls divisions. Top seeded teams are Coleridge in the Clark boys, Wynot in the Clark girls, Walthill in the Lewis boys and Walthill in the Lewis girls.

Three teams are ranked in state. According to the Omaha World-Herald's rankings released Tuesday, Walthill's boys are third and the Walthill girls are seventh in Class D. Coleridge is listed 10th in Class D boys ratings.

The winners of the Clark Division will meet the winners of the Lewis Division for the overall conference title on Saturday, Jan. 30 at Wayne State College.

The tourney pairings:

**Clark Division boys**  
All games at Winside  
First round (Monday): Coleridge bye, 5 p.m.—Winside vs. Hartington, 6:30—Wakefield vs. Laurel, 8 p.m.—Wynot vs. Osmond.  
Semifinals (Thursday): 6:30—Coleridge vs. Winside, Hartington winner, 8 p.m.—Wakefield-Laurel winner vs. Wynot-Osmond winner.  
Finals at 8:15 Friday.

**Clark Division girls**  
First 2 rounds at Wynot  
Finals at Winside  
First round (Saturday): Wynot bye, 5 p.m.—Winside vs. Osmond, 6:30—Laurel vs. Wakefield, 8 p.m.—Coleridge vs. Hartington.  
Semifinals (Tuesday): 6:30—Wynot vs. Winside/Osmond winner, 8 p.m.—Laurel-Wakefield winner vs. Coleridge-Hartington winner.  
Finals at 6:30 Friday in Winside.

**Lewis Division boys**  
All games at Homer  
First round (Monday): Walthill bye, 5 p.m.—Allen vs. Ponca, 6:30—Emerson Hubbard vs. Newcastle, 8 p.m.—Bancroft vs. Homer.  
Semifinals (Thursday): 6:30—Walthill vs. Allen-Ponca winner, 8 p.m.—Emerson Newcastle winner vs. Bancroft-Homer winner.  
Finals at 8:15 Friday.

**Lewis Division girls**  
All games at Homer  
First round (Saturday): Walthill bye, 5 p.m.—Ponca vs. Emerson, 6:30—Allen vs. Bancroft, 8 p.m.—Newcastle vs. Emerson Hubbard.  
Semifinals (Tuesday): 6:30—Walthill vs. Ponca-Homer winner, 8 p.m.—Allen-Bancroft winner vs. Newcastle-Emerson winner.  
Finals at 6:30 p.m. Friday in Homer.

**Lewis & Clark playoffs**  
Championship playoffs to decide the Lewis & Clark champions in the boys and girls divisions will be held on Saturday, Jan. 30 at Wayne State College.

The Lewis girls champion will face the Clark girls champion at 6:30 p.m. and the Lewis boys champion will meet the Clark boys champion at approximately 8:15 for the conference championship.

## sports briefs

### Snoball-softball tourney planned

Avid softball players who miss the summer sport can get back in the swing of things in late January during the first ever KWSC Early Bird Snoball Tournament scheduled Saturday and Sunday, Jan. 30 and 31.

The softball tourney is sponsored by KWSC-Radio at Wayne State College and will be played on the WSC Intramural fields. The single elimination, snoball-softball tourney is open to 12 coed teams which will consist of five men and four women. Trophies will be presented to the first and second place teams. A \$10 non-refundable entry fee must be received from each team. The tournament is designed to promote fun for Wayne State College and the community of Wayne.

Entries will be accepted only by telephone. To enter a team, call KWSC-Radio at 375-2207 after 5 p.m. No written entries will be accepted.

### Wayne CC Board election

The Wayne Country Club Board elected officers of the board at a meeting Monday night. Willis Lessmann was elected president and Al Cramer was elected vice president of the board.

### Area wrestlers are rated

One area wrestler is rated first and four others are among the top four in the most recent Class C and Class D rankings announced Wednesday.

In Class D, Winside's Barry Bowers is listed number one at 185 pounds. Three of his teammates also are rated. John Thies is fourth at 98 pounds, unbeaten Mark Koch is fourth at 119 and Kent Glassmeyer is listed third in the heavyweight division. In Class C, Wakefield's Jon Stelling is ranked fourth at 126 pounds. Winside is rated third in the Class D team standings. Clarks is first and Palmer is second.

## recreation sports

The Wayne boys and girl recreation basketball teams made it a clean sweep over their Fremont rivals Saturday with wins in seventh grade boys, eighth grade boys and seventh and eighth grade girls action.

Wayne won the seventh grade boys game 41-20, the eighth grade boys game 40-39 and the girls game 24-8.

Wayne 7th grade 41, Fremont B team 20; Ted Lueders pumped in 18 points and Ted McCright added eight as Wayne's seventh grade boys pounded Fremont's seventh grade B team.

Wayne led 12-5 by the end of the first quarter, boys added to its margin with a 16-2 advantage in the third period.

Wayne scoring: Ted Lueders 18; Ted McCright 8, Bill Liska 3, Troy Wood 3, Mark Creighton 3, Jon Stollenberg 2, Jason Jorgensen 2, Kevin Griess 2.

Wayne 12 7-16 6-41  
Fremont 5 3 2 10-20

Wayne 8th grade 40, Fremont 7th grade A team 39; in a dead even game, Wayne's eighth graders edged Fremont's seventh grade.

Don Larsen led all scorers with 16 points. Wayne broke away from a 13-13 first quarter deadlock to take a slim 23-21 lead by half-time.

The locals extended their advantage to four points by the end of the third quarter. Fremont outscored Wayne 10-7 in the fourth period but couldn't quite catch Hank Overin's team.

Wayne scoring: Don Larsen 16, Brent Pick 6, Dan Gross 6, Jon McCright 5, Tom Perry 4, Scott Baker 3.

Wayne 13 10 10 7-40  
Fremont 13 8 8 10-39

Wayne girls 24, Fremont girls 8; The seventh and eighth grade girls from Wayne had no trouble handling Fremont's seventh graders.

Laura Keating scored 10 points—more than Fremont's entire team. The locals led 4-1 after the first quarter. The difference in the ball game was the second period in which Keating scored all 10 of her points.

Wayne scoring: Laura Keating 10, Lesa McDermott 4, Sonja Skokan 4, Jodi Dittman 4, Jennifer Moore 2.

## GOOD YEAR TIRE SALE

3 DAYS ONLY! THURSDAY•FRIDAY•SATURDAY JANUARY 21•22•23

CUSTOM POLYSTEEL WHITEWALLS

SIZE	WHITE SALE PRICE	F.E.T. NO TRADE NEEDED
P155/80R13	46.00	1.53
P185/80R13	52.00	1.92
P195/75R14	65.00	2.18
P205/75R15	68.00	2.47
P225/75R15	78.00	2.78
P235/75R15	86.00	3.01

These are Clearance Prices — Limited Availability — First Come-First Serve — No Rainchecks — Not All Sizes Available.

Support your Northeast Nebraska Feeders Association

M&S OIL CO.

419 Main  
Wayne  
375-2811

GOOD YEAR

A sidewalk sale in January? A little out of the ordinary, but so are our prices! Come in out of the cold and check our special racks and tables, and, enjoy the savings!

### WOMEN'S WEAR

- Winter coats
- Junior/Missy sportswear
- Young junior separates

### KIDS' WEAR

- Boys' jeans
- Boy's/girls' outerwear
- Infant accessories
- Boy's/girls' sportswear

### MEN'S WEAR

- Assorted jeans
- Young men's shirts
- Men's sportcoats
- Outerwear

### GIFTS 'N STUFF

- Final week of white sale!
- Glassware
- Stoneware
- Kitchen accessories

Entire Stock Not Included

Support your Northeast Nebraska Feeders Association

# INDOOR SIDEWALK SALE

Shop J.M. McDonald's Thursday, Friday and Saturday, January 21, 22 and 23 for these spectacular savings.

# 30-60% OFF

McDonald's  
Wayne, Nebraska

# Citizen

**(Continued from page 1)**  
**A GOLFER AND** a coin collector, Marsh told the Wayne Herald: "Wayne has been real good to me. It was my choice to stay in Wayne and I've liked it." As the city's chief executive, he opened Sunday night's annual meeting with a welcome to his chamber colleagues.  
 "What better asset could a city have than a good chamber of commerce," Marsh told the crowd.  
 He told the group that the city was "looking forward to the challenge and increasing demands" of a difficult economy.  
 He said he felt the chamber's leadership would "put forth the effort" to help the city's businesses.

**ROBERT ENSZ**, the chamber's new president, praised Marsh during the presentation of the award.

The award ceremony followed the presentation of a presidents plaque to outgoing chamber president Pat Gross.

Ensz also introduced the chamber's new directors for 1982. They included Jim Marsh, Cap Peterson and Galen Wisler.

Chamber committee chairmen were also announced.

Ensz will continue to head the chamber's legislative committee.

Chamber president elect Randy Pederson is chairman of the group's internal affairs committee.

**LOIS HALL**, the only woman on the chamber board, will serve as liaison to the group's newly formed Energy Task Force, according to Ensz.

Dr. Lyvie Seymour will continue with Nebraskaland tours and Ron Sladek will spearhead the chamber's annual Band Day.

Paul Peterson is in charge of industrial development for the chamber.

Marsh was selected to handle the chamber's doctor recruitment committee.

And Wisler is in charge of the chamber's agri-business committee which includes responsibility for the Farmers' Appreciation banquet.

**ROGER TOOMEY**, executive vice president of the chamber, expressed appreciation to Gross for his leadership of the chamber during 1981 and thanked outgoing

directors Swede Fredrickson and Merle Rise.  
 Toomey also received a list of chamber accomplishments during 1981.  
 Among them were the raising of \$1,000 for the Benhock Fund, sponsoring an Employee Night, replanting trees on Main Street, sponsoring Farmer's and Farm Wives Appreciation dinners and the Farmer's Market.

Also, Toomey noted the chamber lobbied the Unicameral for passage of L.B.J., which is expected to help industry relocate to Nebraska. The chamber also lobbied to keep Legal Aid services in Wayne.

**THE CHAMBER** also lobbied national representatives to keep the Industrial Development Bond program, according to Toomey.

Other activities included sponsoring a reception for new Wayne State College faculty members, a 550th Barn Day scholarship and a 50th anniversary dinner for Norb Bruggier of the Wayne Volunteer Fire Department.

The chamber cooperated with the Wayne Regional Arts Council for last summer's Chicken Show, and worked with the Wayne Municipal Airport Authority and Wayne Industries on a 50th anniversary celebration.

During the year, the chamber sponsored nine retail promotions, including a city-wide program on the reopening of state Highway 15 north.

**THE CHAMBER** also was involved in sponsoring the Nebraska Community Improvement Program which brought All Nebraska status to the city.

Under chamber sponsorship the Wayne Energy Task Force was formed. A sales motivation seminar was conducted and the Rural Employment Service continued to operate.

Also, the chamber formed a Christmas Lights Committee which repaired the city's Welcome to Wayne signs, hosted 49 Progress Award coffees and maintained a business hotline.

Chamber members were active in the recruitment of prospective doctors and businesses during 1981, according to Toomey.

Ensz publicly thanked outgoing president Gross for his work in forming the Energy Task Force and improving the town's relationship with Wayne State College.

**MRS. LEOTA Verplank** and son Doug were present at the meeting to discuss the possibility of Doug attending classes at Wayne State College during the second semester.

The contracts were extended during a board meeting Monday evening, Jan. 11.

Compensation for the superintendent and principal will be acted upon at a later date.

**HERMAN UTECHT** was elected president of the Wakefield School Board.

Marie Pretzer was named vice president, and Merlin Greve was elected secretary.

Hartman presented the 1982-83 school calendar for adoption at the February meeting.

**STEVE WARREN** also attended the meeting to hear the board's decision on implementing golf on a limited scale this year.

Board members voted not to add golf to the school's extra curricular program.

# Feeders

**(Continued from page 1)**  
**"THERE'S NEVER BEEN** a better time to join the NNFLA," contends Muller.  
 "People complain about the price of dues, but right now those dues will buy you more than they ever have before," he continued.  
 "Politics is turning around in this country," he said. "We've been spending too fast and farm prices are in bad shape. An effort now in the (state) Legislature should have a better payoff than when prices are good."

# Banker

**(Continued from page 1)**  
 part of the Wayne Industries' presentation to development prospects.

He noted the group's participation in the 50th anniversary celebration of the Wayne Municipal Airport this past fall.

Wayne Industries also has participated in economic development seminars and prospect tours, according to Toomey.

**TOOMEY SAID** Wayne Industries had been contacted a number of times throughout the year by unidentified prospects.

"Most industries don't tell you who they are until they are ready to sit down and talk," Toomey explained.

Both Toomey and Jordan noted that the Wayne Industrial Park sign had been upgraded during 1981. Jordan thanked Stan Morris for his work on the sign improvement.

Jordan also noted that the group started out the year without a full time manager until acquiring the services of Toomey.

**IN OTHER** business Jordan told Wayne Industries members that discussion had been continuing on the possibility of doing some form of annual dues.

Currently, membership in Wayne Industries involves a one time only \$50 fee.

Jordan reassured members that nothing would be done without bringing the matter before the board of directors for more discussion and a vote.

The group collected \$500 last year for new memberships.

A year end financial statement showed expenditures of \$6,998.20 out of a total budget of \$10,550.22.

Muller, who is quick to point out that the NNFLA is part of an organization that has a statewide association and a national association to lobby on behalf of feeders, said the membership drive is not limited to the two days set aside next week.

**"THAT'S AN ORGANIZED,** concentrated effort to renew existing memberships and gain new ones," he said. Members will be accepted through March 31.

Traditionally, the NNFLA membership drive has been the exclusive responsibility of the association's directors, according to Darrel Rahn of rural Wayne.

Rahn, a long time NNFLA member, said that the four county association has recruited new help for this year's all out drive.

In addition to association volunteers, the group's auxiliary will be out in force to add and renew memberships, Rahn said.

**"TODAY, AN** individual has very little say in the way things should be done unless he joins

some association or organization," explained Rahn, a Wayne County NNFLA director.

Muller agreed. "If you figure what it takes to drive to Lincoln to speak at a hearing on one farm bill it would shoot your annual NNFLA dues," he explained.

Muller and Rahn explained that NNFLA lobbies both the state Legislature and Congress through the state association and the national association.

"We do not hire professional lobbyists, however," explained Rahn. "A lot of the work is done by producers. Livestock feeders who know what's going on in the industry and who volunteer their time."

**NORMAN MEYER** of Wakefield, NNFLA secretary and a Dixon County director, joined Muller and Rahn in explaining what they termed the organization's "grass roots" structure.

Policy is set from the grass roots on up," explained Meyer.

Muller also a Dixon County NNFLA director said all policies are discussed at the local

and state level before they get to the national level" of the organization.

"And, any policy taken by the association is voted on by the membership," he added.

Rahn pointed out that policy cannot be changed without a vote of the membership.

He explained that he felt that offered area feeders an opportunity to be part of a unified effort to represent the livestock industry.

**"IT'S GRASS-ROOTS** people setting grass-roots policy," added Rahn.

In addition to Rahn, NNFLA's Wayne County NNFLA directors include Art Greve and Cliff Baker of Wakefield and Wilbur Nolte of Wayne.

In addition to Muller and Meyer, NNFLA's Dixon County directors include Merlin Holm of Wakefield and Gaylen Jackson of Allen.

The four Thurston County directors include Rod Lander and Deree Grahlber, both of Pender, and Roger Tremayne and Howard Swanson, both of

Walthill. Lander is NNFLA vice president. Grahlber is treasurer.

NNFLA's Dakota County directors include Walt Beerman and Ernest Bartles, both of Dakota City, and Milo Berkley and Marvin Rasmussen, both of Hubbard.

**COUNTY EXTENSION** agents are honorary members of the NNFLA.

They include Don Spitze of Wayne County, Stan Stirling of Dixon County, Andrew Christensen of Thurston County and Frank Morris of Dakota County.

Other honorary members include Dr. Cal Ward of Wayne, director of the Northeast Station at Concord, and Terry Mader of Wayne, beef specialist at the Northeast Station.

In addition, the association offers associate memberships to any business that "would like to support the livestock industry," according to Rahn.

Rahn said feeder memberships usually involve livestock farmers with cattle or hogs. "The primary emphasis is on cattle, but we do

have a number of hog feeders in the association," he explained.

**MULLER EXPLAINED** the NNFLA's mission is two-fold: shaping legislation for the livestock industry and educating feeders on the latest industry developments.

NNFLA directors meet once a month, according to Muller, who said the membership holds about four dinner meetings throughout the year.

In addition, NNFLA sponsors a host of programs, including sessions on computerized farming methods, calf preconditioning programs, annual tours to agricultural points of interest, an annual banquet (in April), an outlook meeting (in August) and a variety of seminars on agribusiness.

NNFLA also selects and sponsors an annual Feeder Queen at the county fairs, the stockman's award (presented at the annual banquet), and brings experts into the area to speak on issues of importance to livestock feeders (at the annual Outlook Meeting).

**NEXT: NNFLA's history**

## Wakefield School Board extends contracts to superintendent, principal

The Wakefield Community Schools Board of Education has offered two year contracts to Superintendent Derwin Hartman and Principal Joe Coble.

The contracts were extended during a board meeting Monday evening, Jan. 11.

Compensation for the superintendent and principal will be acted upon at a later date.

**HERMAN UTECHT** was elected president of the Wakefield School Board.

Marie Pretzer was named vice president, and Merlin Greve was elected secretary.

Hartman presented the 1982-83 school calendar for adoption at the February meeting.

**MRS. LEOTA Verplank** and son Doug were present at the meeting to discuss the possibility of Doug attending classes at Wayne State College during the second semester.

The contracts were extended during a board meeting Monday evening, Jan. 11.

Compensation for the superintendent and principal will be acted upon at a later date.

**HERMAN UTECHT** was elected president of the Wakefield School Board.

Marie Pretzer was named vice president, and Merlin Greve was elected secretary.

Hartman presented the 1982-83 school calendar for adoption at the February meeting.

**HARTMAN** reported on the cost of putting storm windows on the elementary building.

The board delayed action pending whether or not the school gets an energy grant.

The superintendent also reported on school board superintendent area negotiation meeting, pre school children receiving special help through Educational Service Unit I learning disabilities in service workshop and the special education biennial visit.

**DIANE Trullinger** music instructor visited with the board about junior-senior band and vocal programs.

The board voted to keep school lunch prices at the current level for the second semester.

## The world's smartest water softener

**FREE\* INSTALLATION**



The Sensimatic is not just a better water softener. It's a revolution. It recycles only when necessary. You save up to 40% on salt.

You save wear and tear on yourself. Just plug it in and forget it.

\*For a limited time, installation is absolutely FREE if you have plumbing for a water softener. If not, see to the installation at half price.

**econoSoft water center**  
 Tiedtke Soft Water  
 106 Main, Wayne, Nebraska  
 375-4909

# Discount Furniture's

# White Elephant Sale

## save 22 to 52%

Now thru Saturday we're clearing our store of singletons, oddments, display samples, discontinued items and incomplete groups. Choose from hundreds of furniture, bedding and accessory bargains in every department of our store. Make plans to shop early because no 2 buys are alike!

Look for the Big Red Special Tag With A Black Star & Really Save

<p>Reg. \$706.00  <b>Dearborn Solid Oak Dinette Sets</b>                  42" Round Dining Table with 2 extra Leaves and 4 Solid Oak Side Chairs                  Now Only  <b>\$339<sup>95</sup></b> 5 pc's</p>	<p>Reg. \$770.00  <b>Mastercraft Queen Size Sleeper</b>                  With Innerspring Mattress, Floral Nylon Cover                  Now Only  <b>\$399<sup>95</sup></b></p>	<p>Reg. \$999.95  <b>Mastercraft Sofa</b>                  Need We Say More? It's A Big Elephant With Quality                  Only  <b>\$370<sup>00</sup></b></p>	
<p>Choose From Two Different Styles  <b>Bedroom Sets</b>                  Large Triple Dresser and Mirror, Door Chest and Headboard                  Now Only  <b>\$299<sup>95</sup></b></p>	<p>King Size  <b>Waterbed</b>                  Complete With All You Need.                  Now Only  <b>\$299<sup>95</sup></b></p>	<p>Close Out On All  <b>Catnapper Recliners</b>                  Prices Starting At Only  <b>\$99<sup>95</sup></b></p>	
<p>All Items Are Priced For Our January Clearance, But Check For The Black Star Because These Are Our Real Steals. Many Others Not Listed In This Ad.</p>			<p>One Group  <b>Southland Sofas</b>                  Complete Closeout Values to \$829.95                  Now Only  <b>\$299<sup>95</sup></b> &amp; Up</p>

Your Furniture Headquarters For  
 N E Nebraska  
 DISCOUNT FURNITURE  
 1 1/2 Miles North of Wayne  
 Phone 375-1885  
 FREE DELIVERY Phone 375-1885  
 Use your credit 90 days same as cash or take 36 months to pay!



## Leaner cattle needed to regain lost ground says Texas feeder

The cattle industry "must take a leaner product to the consumer in 1982" if it is to regain ground lost to pork and poultry in the retail marketplace and move toward profitability in cattle feeding operations.

This was the overriding theme of a talk delivered by Bob Bliss, immediate past president of the Texas Cattle Feeders Association, to some 130 persons attending the 1982 Nebraska Cattle Feeders Seminar in Lincoln, Jan. 7-8.

Bliss, a feeder who serves on the National Cattleman's Association board of directors, expressed some optimism for a turnaround by mid-1982 from the disastrous 1981 business year for cattle feeders. But he warned that much will depend on the initiative, innovativeness and discipline exercised by cattle feeders themselves.

BLISS SAID supply and demand conditions which produced predictable changes in beef prices during the past seven cattle cycles did not work in 1981, a year in which he said feeders "were as disappointed with prices as anytime we can remember."

He cited a number of factors not given enough consideration by feeders and others, which he credited with influencing continued low prices received for fed cattle. By mid-summer, he said, "we should see results of the industry being able to identify major problems and find solutions." But, he challenged, "it will be interesting to see if the industry has the discipline to effect a cure" (for the economic doldrums).

Bliss fingered "competitive meats" — the increases in per capita consumption registered by pork and poultry as the prime factor to which beef producers and feeders must respond.

FEW CATTLE feeders had any idea pork and poultry producers could gain as big a share of the market as they did, Bliss stated. "They have outproduced, outprocessed and outmerchandised us," Bliss said. The much larger percentage of pork entering a retail store has a longer shelf life and is better packaged than beef. This allows much more pork from a delivery truck to be put on the retail counter by a \$5 an hour stock clerk than in the case of beef, much of which must "go across the (cutting) block," the Texas beefman explained. Most beef is fresh and needs further processing into appropriate retail cuts by "a \$17 an hour butcher," he said.

The beef industry "finally is aware of what to do to hold what we have (in the market) and regain lost ground," Bliss declared, adding that "most of us (feeders) feel the immediate need for a leaner product."

Hope lies, he said, in breaking down beef carcasses into small cuts as a part of the slaughter plant operation, along with developing and merchandising of restructured beef cuts — using presently less desirable cuts to produce a product somewhere in between ground beef and steak.

A HIGH inflation rate through most of 1981 proved to be "a catalyst that helped pork and poultry get a better share of the market," Bliss reasoned. (Pork and poultry) people come to a consumer with less money to spend for meat and say, 'here is an attractive protein; it may be red or white, but it's cheaper than beef!'

Bliss said "we as cattlemen asked for less inflation," less interference from government and other economic relief at the beginning of last year. As Reaganomics was put into operation, Bliss said cattlemen recognize "it's our turn to bite the bullet." However, he commented, "we thought the bullet was a 32 caliber and not a 4 inch howitzer shell."

While the rate of inflation has been slowed, a recession can be just as detrimental to cattlemen, Bliss said. Noting that consumers generally are "sitting on their pocketbooks" waiting for a financial upturn, he conceded that "beef sells better when the economy is afloat."

BLISS PREDICTED that interest rates will drop some in 1982, depending on action by the Federal Reserve Bank. He said 1982 will be a crucial year for industry using organized labor to decide whether the continuing spiral of wage increases can be stopped or blunted. (Contracts with some of the largest unions expire this year.) He pointed out that some packing firms have secured agreement from their labor force to accept smaller wage hikes or zero increases in exchange for keeping plants open or other concessions.

The speaker predicted an ample money supply for agriculture in 1982. But he warned that credit no longer will be made available to agriculture at a discount when compared to other production segments of the economy. "This will be the prevailing attitude of government," whether or not the Reagan Administration eventually is re-elected, he maintained.

Bliss touched on these other areas:

**Energy** — Energy costs will not increase at a rate higher than inflation in 1982 and will not be a major factor for feeders.

**Diet-health issue** — While much concern regarding recommendations by government and health authorities against red meat — especially beef — in the diet has died down, "damage done two years ago remains" and must be addressed in a long term effort by the beef industry.

**MERCHANDISING** — states should join a national effort by beef interests to aggressively advertise and merchandise beef. Four Texas cattle organizations banded together for a 25-cent-a-head checkoff. Suggesting beef producers and feeders need to be more imaginative, Bliss said Iowa pork producers set up barbecue grills outside the Iowa State University stadium during a football game last fall and handed about 20,000 5 ounce porkburgers.

**Risk management** — "The rank and file cattle feeder has not considered this enough in the past 10 years; not all of us are going to survive this winter and spring. Cattlemen must become fulltime businessmen." "End users" — retail stores and fabricators at the end of the market chain — are concerned with who's going to survive and who will feed cattle. End users, such as retail chains, are signing contracts in some instances to assure quality and supply.

**EXPORTS** — Exports could contribute to a substantial increase in demand in the next two years. Mexico has agreed to purchase 80,000 to 100,000 standard grade beef carcasses.

**Information exposition** — The time is past when a cowman could listen to the local radio station to find out what price beef sold for yesterday and make a decision on how and when to sell cattle. Sophisticated hardware and software and market reports and analysis organizations, such as CattleFax, are available as tools for feeders to use. Feeders need to look at long range weather and crop conditions, and the future supplies of competitive meats. "They need to know how many eggs are set and how many broilers are placed."

In considering the beef cattle operation "from pasture to plate," Bliss said producers and feeders must recognize that "consumer demand for lean beef is not a fad — it is persistent and consistent."



Photography: Randall Howell

## Waiting out the winter wind

LAST WEEK'S incessant wind put a bitter bite into winter for area livestock. Cattle hunched behind shelter belts and haystacks as the wind-chill became a survival factor for hogs and cattle. Here, blowing

snow frosted the backs of cattle on the Bill Corbit farm southeast of Wayne. Hogs stayed close to the bunched cattle for warmth and protection while blowing snow obscured the countryside.

### Hotline 375-2602

**Thursday Night**  
You could win \$1,000 in Bonus Bucks. Just be at the 4th Jug Thursday at 8 p.m. for the drawing.

**4th Jug**  
Main Wayne 375-9558  
Support NE Nebr. Feeders Assn.

### 4-h news

#### Hi Raters Girls

The Hi Raters Girls 4-H Club installed new officers at their meeting Jan. 14 at Grace Lutheran Church in Wayne.

The meeting opened with recreation led by Tanya Willers.

New officers are Mrs. Darrel Rahn, leader; Jerrae Dorcey, president; Tanya Willers, vice president; Dawn Droeschler, secretary; Valerie Rahn, treasurer; and Cheryl Murray, news reporter.

Yearbooks and activity records were distributed and filled out.

Initiation was held for three new members, Shelly Gilliland, Jennifer Hammer and Shelly Dorcey.

Lunch was served by the Jerry Dorcey family.

Next meeting will be at 8 p.m. Feb. 11 at Grace Lutheran Church. The Droeschler family will serve refreshments, and the Rethwisch family will have recreation.

Cheryl Murray, news reporter.

#### Loyal Lassies

The Loyal Lassies and Lads 4-H Club met in the home of Brenda Test on Jan. 6.

Following the business meeting, demonstrations were given by Wendy Wiedt, Monica Metz, Amy Wriedt and Brenda Test.

Members voted to exchange Valentines during the February meeting, scheduled Feb. 3 in the home of Brian Lentz.

Rachel Haase, news reporter.

### If you have earned income, you qualify for a Tax Deductible Individual Retirement Account (I.R.A.)

The Economic Recovery Act of 1981 permits everyone to put up to \$2,000 a year into an Individual Retirement Account and deduct it from their taxable income.

Your Auto-Owners Agent can show you how to take advantage of this tax break with an exclusive new high interest I.R.A. program.

### Northeast Nebraska Insurance

111 West 3rd Ph. 375-2696 Wayne, NE

**Auto-Owners Insurance**  
Life, Home, Car, Business. One name says it best.

## ATTENTION FARMERS

Tour John Deere Combine Factory, Plow-Planter Factory, Foundry And Administrative Building, Moline, Ill.

January 26 & 27

Cost - \$95 Per Person - Includes Transportation, Meals And Lodging Call For Further Details

Logan Valley Implement Wayne, NE 375-3325

**LOGAN VALLEY IMPL.**

Phone 375-3325 East on Highway 35 - Wayne, NE

## Erv Hagemann Jr.'s Pork Production OPEN HOUSE



PLACE: Erv Hagemann Jr. Farm - 4 miles South and 1/4 West of Wayne

DATE: Tuesday, January 26, 1982

TIME: 10:00 a.m. - 3:00 p.m.

Erv welcomes you to his farm to see how he automated his existing facilities to accommodate full circle pork production. Experts will be on hand to show you how the same automation can be incorporated into your operation.

### SPONSORED BY:

Scott Klemetson - NE Harvestore Systems, Inc.

John Nutzman - Wayne Feeds (Feeders-Elevator, Inc.)

Neil Keiser - Midwest Livestock Systems



FEEDERS ELEVATOR, INC.

## farm briefs

### Conservation tillage conference

Soil eroded from Nebraska farmland at the rate of eight tons per acre per year in 1980 and 1981 and the trend is expected to continue. In the entire Corn Belt region, 37 percent of cropland eroded at annual rates higher than the Soil Conservation Service's tolerance level of five tons per acre.

These figures from the SCS and the U.S. Department of Agriculture point to the need for conservation measures, one of the topics to be highlighted March 2-3 at the "Conservation Tillage for Row Crop Production" conference to be held in the Nebraska Center here.

"The major purpose of the conference is to provide farmers with practical information on how to use conservation tillage successfully. In addition, current research pertaining to several aspects of conservation tillage will be discussed," said Elbert Dickey, conference chairman and University of Nebraska Institute of Agriculture and Natural Resources extension agricultural engineer.

The program on March 2 will give participants an overview of various tillage systems, including advantages and disadvantages of each. Fuel and labor requirements, erosion control potential and use of these systems with irrigation also will be highlighted. Weed, insect and disease control problems, as well as accurate and safe pesticide application also will be discussed.

A panel of researchers will explain current research in conservation tillage.

Planter performance and conservation tillage economics will be presented March 3. A look at SCS programs will be part of the conference, along with soil compaction, fertility and soybean production research. Members of a farmer panel will discuss their successes in developing conservation tillage programs.

Registration fee for the conference is \$30 if paid by Feb. 12 and \$35 after that date. Interested persons should contact their extension agent or Dickey, 250 Ag Engineering, University of Nebraska, Lincoln, Neb. 68583 0726.

### Bedell to speak at meeting

Iowa Congressman Berkeley Bedell will be the featured speaker at the Center for Rural Affairs ninth annual meeting Feb. 13 in Hartington. Bedell will speak on the topic "Taking Back Control of Rural America." He serves on the House Agriculture and Small Business Committees, including important subcommittees involving farm credit, conservation commodity programs, energy, and anti-trust issues. Bedell's speech will follow presentation of the Center for Rural Affairs annual report highlighting the group's work in the past year and outlining future activities.

The event also includes an afternoon program with talks by Bishop Lawrence J. McNamara of the Catholic Diocese of Grand Island and Bishop L. David Brown of the Iowa District American Lutheran Church. The men will speak on the church's role in agriculture and land issues. Both have been leaders in their respective church's growing involvement in rural affairs.

The afternoon session begins at 3 p.m. at the Knights of Columbus Hall. The evening program will be held at Holy Trinity Elementary School beginning with a Nebraska Country Supper at 4 p.m. Cost of the meal is \$6 (under 12 free). Reservations must be made at the Center's office in Walthill before Jan. 29. The meeting is open to the public.

### Young Peoples seminar slated

The 1982 Nebraska Farm Bureau Young Peoples Citizenship Seminar will be held March 21-23 at the Nebraska Youth Leadership Development Center in Aurora.

Purpose of the seminar is to obtain a better understanding and appreciation of Nebraska heritage and the Unicameral system. The seminar is specifically designed for high school students who will complete their sophomore or junior year this spring. Each county will have an opportunity to send two students.

Students interested in attending should apply before Feb. 11 to be eligible for scholarships that will be available for the seminar.

Interested students in Dixon County should contact Mrs. Harold George of Dixon 584 2625, as soon as possible.

### Beef improvement seminars set

Two Nebraska Beef Improvement Seminars with the theme, "Survival With a System," will be held in February, according to University of Nebraska extension beef specialist Dr. Jim Gosper.

Identical programs, except for one topic, will be held at the Holiday Inn at Ogallala on Feb. 9 and at the Dodge County Extension Building at Fremont on Feb. 10. Both sessions will run from 9:30 a.m. to 3:30 p.m.

Topics at both sessions are: What the Commercial Producer Should Know about Breeding Values; The Economics of Replacing Old Cows with Heifers; The Genetics of Calving Difficulty; An Economic Look at Efficient Cow-Calf Systems and Beef Cow Efficiency; At Ogallala, purebred and commercial beef producers will hear about High Intensity Short Duration Rotation Grazing; at Fremont, about Effective Use of Grazing Land. In addition to NU Institute of Agriculture and Natural Resources specialists, speakers from Montana State University, University of Missouri and South Dakota State University will appear on the program. A registration fee of \$15 includes lunch. The seminars are sponsored by the Nebraska Cooperative Extension Service and the Nebraska Stock Growers and Nebraska Livestock Breeders Associations.

### Farmstay program planned

Educational Resource Development Trust has announced that it will again sponsor the summer Farmstay program this year. Dr. Richard Sherman, director of student exchange, states that the Farmstay program was very successful in four locations last summer: Nebraska, Michigan, Missouri, and Iowa. For 1982, we perceive even more demand for this unique program.

On the Farmstay, a student spends four weeks in the summer with a farm or ranch family and engages in most facets of American farm life. The host family is responsible only for room and board. The foreign young person, either male or female, must be between the ages of 16 and 25 and possess at least a basic knowledge of English.

Each student understands that part of his experience on the farm includes doing a variety of farm chores. The youth will be coming mainly from European countries. Families interested in this program or other foreign exchange programs for youth should contact Nebraska representatives: Don and Lois Cook, Box 83, Orchard, NE 68704, phone (402) 893 5755.

### Extension board votes counted

Votes from the District 11 Wayne County Extension Board election have been tallied. Incumbent members Alan Thomsen and Mrs. Eldon Heinemann, both of Wakarusa, have been re-elected to the Extension board for a second two-year term.

Board members who have one year yet to serve are Mrs. Norris Lamborn, Hoskins, and Don Lindman, Carroll, from District 11 and Mrs. Larry Nichols and Dawine Reithausch, both of Wayne, from District 11B. Representative from the Home Extension Council and the 4-H Council are Mrs. Gerald Popkishi, Wayne, and Harold Witter, Hoskins, respectively.

The Wayne County Extension Board is responsible for directing the activities of the Wayne County Extension Service.

### Board members elected

At the annual stockholders meeting of Farm Bureau Insurance on Jan. 7, board members were elected to serve for three years.

Newly elected board members are: Richard Hanson, Iner, Peterson, and W. E. Hanson, Concord; Norman Meyer, Wakarusa, and Ross Armstrong, Ponca. Richard Hanson was elected president. Other officers are: Verdel Erwin, vice president; Elroy Hank, treasurer; and Paul Fischer, secretary.

Verdel Erwin was elected a delegate to the state fair board convention at Kearney Jan. 23-26.



### Dealers honored

MR. AND MRS. Dennis Luft of Wayne were recently honored at a Northrup King meeting for being chosen Dealer of the Year for 1981. The special recognition was given for outstanding achievements in sales. Pictured above receiving their award are Mr. and Mrs. Dennis Luft (right and center) with their Northrup King Territory Sales Manager, Jim Sturm (left).

### Cow nutrition is aided by supplemental feed

Producers should pay careful attention to beef cow nutrition this winter. Paul Guyer, University of Nebraska extension beef specialist, said this week.

This winter will be quite different for wintering beef cows than the winter of 1980 or even two years ago, especially since most Nebraska herds are now within 60 to 90 days of calving, Guyer said. During this last part of pregnancy, the fetus grows rapidly making adequate nutrition more important.

The last two years have not been much of a problem for beef cow nutrition as we have had dry fall weather, stalks were of excellent quality and there was heavy ear drop, Guyer recalled.

"THIS FALL AND WINTER there was less ear drop, stalks seem to be of lower quality because of humid fall weather and snow now covers the more valuable parts of corn stalk fields," he said.

To avoid excessive cow weight loss and to produce a strong, healthy calf, most producers will need to feed more supplemental feed to cow herds from now until calving, he said.

Protein will be the major difference in supplemental feed needs from the last two years," Guyer said. Cows will still need phosphorus and vitamin supplementation.

"IF THERE IS an ample supply of roughage, protein supplementation is all that should be needed in addition to phosphorus, salt and vitamin A before calving," he said.

If you are short of roughage, then grain feeding may provide energy needs cheaper than buying hay," he said. "If you do have enough alfalfa hay for a supplemental protein source, feed it at about three to six pounds per cow per day, depending on hay and forage quality."

## this and that

don c. spitzer  
wayne county extension agent

### KEEP SHRUBS FREE OF SNOW

It is necessary to keep the heavy snow off evergreen shrubs to prevent serious damage to branches.

Damage from large amounts of heavy snow occurs when limbs are split off, destroying the natural form of the plant.

There are two possible means to prevent serious damage to your plants this winter.

The first way is to tie up any of the large spreading plants with a length of chicken mesh. Bundle your plants with wires to form a type snow off plants, but it does prevent the weight of snow from splitting branches. Wires should not be drawn too tight around plants since this can also cause injury.

A second method of protection is available if you have only a few plants to consider. Brush the snow off the plants as soon as it comes down during the storm, or as soon as it stops snowing if it is a very heavy, wet snow.

### INCREASING AFRICAN VIOLETS

If you're looking for ways to increase your African violets, there are two simple ways to do this without buying new plants.

Older African violets frequently develop several crowns. You can easily separate them with some of the roots still attached. Using a sharp knife, cut straight down between the section and through the root system. The separated crowns are then ready to be re-potted in separate pots.

Another easy way to start new African violets is by leaf cuttings from healthy plants. Select a healthy, recently matured leaf and remove it from the crown of your plant. You can root the leaf by placing it in water, sand or a 50/50 mixture of sand and peat.

It is important that the leaf blade doesn't come in contact with the water or other rooting material. If you use water, place a piece of waxed paper over the top of the container and fasten it with a rubber band. Then slip the leaf stem through a hole in the center of the paper and down into the water.

### WINTER IS GOOD TIME TO PRUNE

Late in the dormant season is the best time to prune your broadleaf yard trees. Always try to keep the natural shape of the tree. If a main limb must be removed, it should be cut back flush to the trunk, leaving no stub. The same principle should be used in removing secondary branches (they should be cut flush with the stem of the main branch).

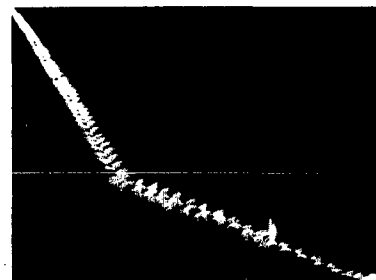
Topping is a very sloppy way of pruning trees. It accomplishes nothing other than spoiling the appearance and shortening the life of your tree.

## Sandy's Bookkeeping & Taxes

I'll prepare your taxes like I had to pay them, and I do NOT like paying taxes.

106 Cedar Laurel  
Telephone 402-256-3563

## More Valley Corner Systems every year,



### because it's the least costly investment per acre.

It's going to be harder to make farming pay off in the years to come. Harder for many reasons.

So if anything makes sense, it's to maximize the potential of the land you now farm. Irrigating with a center pivot is one way. Irrigating with a Corner System is even better.

A Corner System can irrigate 19 to 45 more acres than a regular pivot, producing extra income on acres already being farmed. That's why nearly one out of every six pivots sold today is a Corner System.

And when it comes to Corner Systems, nobody knows more than Valmont. They're proven reliable with nearly 3,000 systems in operation. That's at least 20 times more than any other brand.

Before you buy any center pivot, see us. We'll tell you how a Valley Corner System can add to your bottom line profits while being the least costly investment per acre.

Valley dominates the field.



Husker Valley Irrigation  
Phone 371-0133 RR 2 Norfolk, NE 68701  
In Wayne Area Contact:  
Mick Samuelson - 375-4027

## 3200-3600 LOCAL CATTLE FRIDAY AT VERDIGRE!

Friday, Jan. 22 - 11:00 a.m.

- JOHN BARL - 100 Crossbred str. & hfr calves
- HAROLD MICHALES - 120 Angf. & Heref. str. & hfr calv
- BILL KOEHN & SONS - 150 Simmental str. & hfr calv
- LOUIS SKORAN - 35 Crossbred str. & hfr calves
- EARL EPPENBACH - 35 Crossbred str. & hfr calves
- JERRY (AHO) - 100 Hereford & Crossbred calves
- DON (AHO) - 150 Angford & Hereford calves
- H & J MOFACEK - 40 Crossbred str. & hfr calves
- J & C VOLQUI ARDSEN - 50 Angford str. & hfr calves
- WALLY SURT - 2 loads Simmental str. & hfr calves
- JOYCE RISINGER - 1 load Hereford str. & hfr calves
- JOHN NOLAN - 80 Angford str. & hfr calves
- ROY ENGELHAUPT - 75 Heref. & Crossbred calves
- DAHREL BENTZ - 1 load Angford str. & hfr calves
- ALFRED RACZOR - 1 load Hereford & Crossbred calves
- JARVIS FARMS - 2 loads Crossbred str. & hfr calves
- DENNIS STRADLEY - 1 load Angford str. & hfr calves
- GAIL HEISER - 50 Crossbred steer calves
- VINCE WARNKE - 100 Angus cross str. & hfr calves
- LESTER EFFLE - 2 loads Hereford & Angford calves
- KEN KUCERA - 45 Crossbred str. & hfr calves
- DOUG JANOUSEK - 20 Crossbred str. & hfr calves
- JIM TIKALSKY - 19 Hereford & Angford calves
- VERN JOHNSON - 20 Holstein cross calves
- GARY LOWIN - 2 loads Crossbred yrlg. str. & hfr
- GENE KOOPS - 20 Hereford & Angford calves
- FRED FRANK, JR. - 20 Hereford & Angford calves
- GERALD HART - 70 Simmental str. & hfr calves
- G & E. HEGGEMEYER - 2 loads Crossbred civs. & yrlgs
- LEONARD KOPECKY - 1 load Angford str. & hfr calves
- LEONARD MATHERS - 20 Simmental str. & hfr calves
- EARL HANSEN - 30 Simmental str. & hfr calves
- DAVE SDAK - 15 Crossbred yearling steers
- CHAS. PROKOP - 40 Hereford & Angford calves
- FELIX HOLAN - 1 load Crossbred yrlg. str. & hfr
- DALE SUKUP - 1 load Crossbred yrlg. hfrs
- ART HERTZ - 20 Simmental hfr. calves
- FRED FRANK - 30 Angford bred cows and 13 Crossbred bred heifers - Complete Dispersion!
- ALSO LISTED - 25 Angus bred cows and 150-200 butcher cows and bulls

These cattle are all fresh from farms and ranches in this area sale day. Many reputation cattle in the offering.

USUAL RUN OF FEEDER PIGS, BRED SOWS & BOARS!  
Early listings: 40 Crossbred pigs, 40 lbs.; 15 Crossbred pigs, 20 lbs.

NEXT SPECIAL DAIRY SALE  
WEDNESDAY, FEBRUARY 3rd - 1:00 P.M.

JELINEK 26th ANNUAL HEREFORD PRODUCTION SALE  
THURSDAY, FEBRUARY 4th - 1:00 P.M.  
Selling 50 top quality Hereford 2-yr. old bulls and 25 bred heifers

SPECIAL CONSIGNMENT BRED COW SALE  
WEDNESDAY, FEBRUARY 10th - 1:00 P.M.

VERDIGRE LIVESTOCK MARKET  
Ken Koops - Phone 668-2248  
Verdigre, Nebraska



Wayne Herald  
Hotline  
375-2602

### THURSDAY NIGHT

Be Sure To Stop In Thursday at 8 p.m. for the Give-Away

KAUP'S TV Sales & Service  
222 Main Wayne 375-1353

### FISH FRY

Friday, Jan. 22

7 to ??

\$1.00 PLATE

TP LOUNGE  
211 East 3rd 375-3998  
Wayne

## Top operators have two things in common.

First, top operators are good production managers—they know how to raise a good crop and get the most from livestock production. Secondly, and maybe more importantly, top operators are good financial managers. And wise use of credit is where a professional agricultural loan officer can really help.

At the Production Credit Association we specialize in operating credit for agriculture. And we work with many of the top operators in this part of the country... large and small alike. We look carefully at an operator's management skills. How he manages rather than how much he manages is what we're most interested in.

If you're a good operator, look to an agricultural credit specialist—look to PCA. Our loan officers are knowledgeable, professional and eager to help you work out a sound, constructive credit program.



Now more than ever, you need a lender who understands.

We're agriculture's leading lending hand.

Let's talk!

Norfolk Production Credit Association  
In Wayne County see Fred W. Schellpaper, Jr.  
Phone 371-1833

# Thone's budget blueprint pulls purse strings tight

By Melvin Paul  
Statehouse Correspondent  
The Nebraska Press Association

Nebraska lawmakers have been presented with another hold-the-line budget. But in the 1982-83 blueprint, more lines than usual are being held.

Gov. Charles Thone, and J. James Exon before him, every year attempted to present to the Legislature a budget proposal that would hold the line on tax rates. As the purse strings have been pulled tighter, however, other "holds" have been placed on state spending.

The 1982-83 spending plan Thone presented recently to lawmakers is one of the tightest budgets to surface in years. It's even tighter when you figure the base for his spending plan is lower than what the 1981 Legislature approved. Thone built his proposed 4.3 percent budget increase on the reduced appropriations state agencies had to live with after the special legislative session last fall.

AS YOU MAY recall, Thone called lawmakers back into session in November to cut state spending in order to avoid tax hikes. In many cases, agencies had to reduce their budgets by 3 percent.

Thone and his budget staff subtracted those reductions from 1981-82 appropriations and came up with a \$713.3 million budget base. He proposed a 4.3 percent increase — to \$743.9 million — for the 1982-83 operating budget.

Thone aides said the budget blueprint represents a "maintenance" plan, meaning operations generally will just be maintained, not expanded. New programs are virtually unheard of in his budget, but Thone did suggest two new revenue generating proposals.

The governor wants to increase the corporate income tax rate in such a way that the largest corporations in the state will carry the burden of the increase. He also

asked cigarette smokers to pitch in another 4 cents a pack.

The higher corporate tax rate would generate an estimated \$20.5 million over an 18-month period, retroactive to Jan. 1, while the increase in the cigarette tax would raise an estimated \$7 million in more income for the state.

THONE'S AUSTERE budget must be accepted by the Legislature, which could completely or partially alter the governor's plan before taking a final vote. Indications are there will be a number of attempts to alter the budget blueprint, but the Legislature's and governor's bottom lines likely will be similar.

Thone promised to use his veto power if lawmakers approve any new programs that would necessitate increases in the sales and income tax rates.

"Important services for which governments are created" will continue, but that's about it, Thone told the lawmakers. "It's the

kind of budget that conditions require."

The hurdles Thone's budget will have to cross will become more evident as the session progresses and the Appropriations Committee holds hearings on agency requests. The legislative budgeteers no doubt will hear pleas for more money, at least enough more to match the inflation rate.

Thone's corporate tax plan also can be expected to face close scrutiny. A number of lawmakers already have criticized the proposal, and some senators would rather raise the individual income tax rate to make up the revenue that would be lost through federal tax cuts.

BUT THE IMPORTANT thing to remember is, the state cannot spend more than it takes in. That means both the Legislature and Thone are working with similar bases, since they both rely on state Revenue Department projections on how much revenue will come in.

It's conceivable economic conditions will change, causing the department to revise projections upward. In that case, there'd be more flexibility in the budget. But even the Revenue Department can be expected to be cautious in its approach, especially in light of recent times when projections considerably overshoot actual receipts.

But Thone's money-saving spending plan is not without its reminders to Nebraskans that everybody must join in what he refers to as belt-tightening.

"I hope Nebraskans will consider their present battered and dented (license) plates as badges of honor in Cheyenne and our other 92 counties and a testament to our determination to restrain state spending," Thone said.

By keeping the Bicentennial plates another year, Thone estimates the state can avoid spending \$2 million in 1982-83.

THONE REITERATED that his budget plan means "we must make tough choices.

It does mean that we must be willing to stand up to the pressures from the special interest groups that will inevitably be applied."

Thone, as he often does, gave a state of the state and budget address that was laced with nostalgia. He referred to the pioneer spirit that tamed the west and made Nebraska what it is today. Nebraskans, he said, must use that pioneer spirit again.

"The state of the state is good, he said, 'because we have exercised restraint and fiscal prudence.'"

"It will remain sound if we stay true to our course."

So Nebraskans, as they drive around the state and across the country boasting their battered and dirty badges of honor, can satisfy the curious by saying the pioneer spirit is helping them weather hard economic times, and the 1976 Bicentennial plates are just a symbol of Nebraskans' fiscal restraint and prudence.

## viewpoint

### First, a rose...

to Mayor Wayne Marsh for his well deserved Citizen of the Year award Marsh, who turned 68 today (Thursday, Jan. 21), was honored during Sunday night's annual Wayne Chamber of Commerce meeting.

Wayne is blessed with many top notch business and community leaders. Mayor Marsh stands among them as a leader of leaders.

Anyone familiar with his abilities as both a businessman and leader knows that he works with a broad and deep knowledge of the community and its problems.

With a willingness to see more than one side to an issue, Marsh has — time and time again — brought opposing forces together for a common understanding.

A strong community booster, Marsh often displays dogged determination to focus on the crux of an issue and work toward a practical solution.

Quick to use humor to make a point, the mayor also is, by nature, an optimistic man who is willing to take a stand for the good of the community — even when the position is unpopular.

Equally at home with powerful state leaders and hometown wage earners, Marsh has set a tone for community leadership that make Wayne residents proud of him.

His style brings years of business wisdom together with a firm grasp on honesty and fairness.

That combined with his special ability to work with people in all walks of life adds a very meaningful dimension to Wayne's future.

Congratulations, Mayor Marsh.

### And, then, a thorn...

to Harlan Mattes, Allen Consolidated Schools Board of Education chairman, for his handling of the recent discussion on the district superintendent's contract renewal.

Though the discussion apparently deadlocked the Allen School Board over the issue of extending Superintendent Robert Heckathorn's contract, Mattes was less than open about what transpired at meeting.

Preferring to blame the press for the district's problems, Mattes apparently forgot that he is a public official representing district taxpayers.

He not only has rude telephone manners, but also seems to have his own philosophy about whether or not the public's business ought to be conducted in public.

Now, Mattes did nothing illegal. That's not the point. The point is that he has gone out of his way to hinder a full and open report to the taxpayers of the district.

If anything, as board chairman, he should have a better grasp of what it means to be a responsible leader.

Hopefully, as the board works its way toward a solution to the problem, Mattes will learn that a cover up of the public's business is irresponsible.

*Randy Forbeck*

## another viewpoint

### Cancer deaths

More than one-fourth of American cancer deaths in 1982 will be from cancer of the lung. A generation ago (1950), lung cancer accounted for only 8.7 percent of cancer deaths.

This year 9,000 more Americans will die of cancer than died of the disease in 1981, and that two-thirds of these additional deaths will be directly attributable to cancer of the lung. A total of 430,000 cancer deaths in 1982, 111,000 will be due to this form of cancer.

If it weren't for lung cancer, the overall cancer death rate would actually be going down.

The rapidly rising lung cancer death rate has obscured a reduction in death rates for all other kinds of cancer combined.

Overall cancer death rates appear on the surface to be heading up, but that's only because lung cancer is forcing them in that direction. When lung cancer is taken out of the totals, the overall cancer death rate is definitely heading the other way.

Between 1950 and 1978 the death rate for all cancers increased from 157.0 to 169.9 per 100,000 population, but that with lung cancer excluded from the figures the overall cancer death rate actually dropped from 144.0 to 128.7. The most recent year for which complete statistics are available is 1978.

The irony of this situation is that lung cancer is among the most preventable of all diseases. The best way to avoid getting it is to give up cigarettes. Smoking is responsible for about 83 percent of lung cancer cases among men and 43 percent among women — more than 75 percent overall.

On the basis of official records compiled by the World Health Organization, "Facts & Figures" reports that during 1976 and 1977 the lung cancer death rate for American males ranked sixth highest in the world, and the lung cancer death rate for American females ranked fifth.

Lung cancer in the United States is developing at a much faster rate than any other kind of cancer. There will be 122,000 new cases of colon-rectum cancer and 112,000 new cases of female breast cancer. Next in line is prostate cancer with 73,000 new cases estimated.

— American Cancer Society  
Nebraska Division

## Kids seat-belt bill buckles Liquor bill drawing opposition

Since the session began on Jan. 6, 277 new bills have been introduced.

So far, the days have mostly been spent in floor debate on the various bills and resolutions held over from last session.

Public hearings began last Friday as the Legislature began its customary schedule of floor debate in the mornings and public hearing in the afternoons.

ONE OF THE first bills to come up for public hearing was LB 616. This bill would create a new category of retail liquor licenses, allowing wine and beer to be sold offsite.

Passage of this bill would not remove the power of local authorities to control the issuance or nonissuance of the license, just as they do with other types of retail liquor licenses. Considerable opposition to the bill was heard at the hearing.

LB 69 was advanced last Wednesday without my support. This bill would require the use of passenger restraint systems for children under the age of four.

ALTHOUGH THERE are good intentions behind the bill, it has been watered down so much with amendments that the teeth have been taken out of it.


Pickups have been exempted from meeting the requirement, the fine for non-

compliance has been reduced from a Class V misdemeanor to an infraction, and even that small penalty would be waived if proof were later shown that a restraint had been purchased.

This type of law, like attempts to mandate the wearing of seat belts, would be virtually unenforceable. Even if enforced, the penalty is meaningless. It is this type of law that lowers our respect for the law.

Two measures which I viewed more favorably were Legislative bills 305 and 126. LB 305 would raise the age limit for compulsory education to 17. I think this is a good bill because it may have the effect of encouraging more students to graduate.

senator merle von minden



LB 126 would make shoplifting a separate crime and establish harsher penalties for those who are caught.

Statistics indicate that this crime has reached staggering proportions and I feel that something should be done to discourage this activity and protect our business community. Both bills were advanced last week.

LB 233 was introduced to authorize the issuance of bonds of the state for highway construction and repair. The intent was to raise a million dollars to be used specifically for Highway 81.

WITH THE POOR condition of the economy and the current high bond rate, I didn't feel that I could support the bill. The bill failed to receive the required number of votes for advancement and probably will not come up again in the short session.

Each bill is given three opportunities to advance before it is killed, however, with the short session and so many other bills to consider, it is unlikely that a bill that fails to advance the first time will have a second chance.

As you can see, it has been a busy week. With public hearings in full swing, the next few weeks promise to be even busier.

If you have any questions or comments which you would like to express about these or other bills, please feel free to contact me.

## way back when

30 YEARS AGO  
Jan. 17, 1952: Mr. and Mrs. Harry Cruickshank, Wakefield, returned Thursday from visiting relatives over the holidays in Arizona and California. Mrs. Dorothy Kabisch was recently appointed Wayne County chairman for the 1952 cancer drive for funds. 150 persons attended the father-son banquet Thursday evening held in the Methodist Church, Carroll, and sponsored by WSCS. Gov. Val Peterson, Lincoln, was guest speaker.

25 YEARS AGO  
Jan. 24, 1957: Colleen Willert, Wayne High, and Barbara Hughes, Wayne Prep, this week were named winners of the University of Nebraska regent's scholarships. WSTC President W.A. Brandenburg was guest speaker at Wayne Kiwanis Club Monday noon at Hotel Morrison. Linda Morris, a 12-year-old District 36 seventh-grader, is Wayne County's 1957 spelling contest champion.

20 YEARS AGO  
Jan. 18, 1962: Troy Vaughn, former Wayne resident, will take over the management of Swans' Ladies Apparel effective Feb. 1.

Gordon Davis has been installed as worshipful master of the Winside Masonic Lodge. David Ewing, son of Mr. and Mrs. Dave Ewing, won the University of Nebraska regent's scholarship at Wayne High.

15 YEARS AGO  
Jan. 18, 1967: Wergler Mann, Winside, is the new chairman of the Wayne County Soil and Water Conservation District board. Karen Wills, daughter of Dr. and Mrs. Stanley Wills, Wayne, was revealed as winner of the peace essay contest sponsored by the Wayne Lions' Club. Wayne and York are the sites of the two area swine days being held in Nebraska this year. York's 565

10 YEARS AGO  
Jan. 20, 1972: Don Reed, Wayne attorney, will be the master of ceremonies for the annual Wayne Chamber of Commerce dinner, which will be Monday evening at city auditorium. Wayne Countyans received winter's hardest hit the past week when the mercury plummeted to 18 below on Saturday after 17 on Friday. The annual meeting of the Wakefield Rural Fire Protection District will be held at the Wakefield Fire Hall Feb. 2.

If you have a problem or a suggestion about state government, now's the time to contact your state senator.

Wayne area residents are represented by two legislators: Sen. Merle Von Minden of Allen and Sen. Elroy Heffner of Coleridge.

The toll-free Unicameral Hotline is 1-800-742-7455.

Von Minden's Lincoln telephone number is 471-2716.

Heffner's Lincoln telephone number is 471-2716.

Letters to the senators need only be addressed to them c/o the State Capitol, Lincoln, NE 68559.

## Property-tax ruling stirs historical state debate

By M.M. Van Kirk  
Nebraska Farm Bureau

Nebraska's personal property tax exemption issue, tossed back on the legislative fires by a Lancaster County District Court decision on Jan. 5, has gone on so long that even some of the participants seem to have forgotten what the whole thing was about in the first place.

The largest court decision was expected. It had been predicted by the state Attorney General, as had two previous court rulings against the methods of reimbursing the local governmental subdivisions for the lost personal property tax revenues. That has always been the sticker, not the principle that taxation of the tools of production is unfair and uneconomic.

TO REVIEW the history of the personal property tax dilemma, one must go back to 1967. The voters in the general election of 1966 had not only killed a law establishing a state income tax but had also passed a constitutional amendment removing the state's authority to levy a tax on property, which up to then had been the state's main source of revenue. The 1967 Legislature had to come up with an all-new tax system, fast.

It settled on the percent combination state sales and income tax, eliminated the poll tax, the tax on household goods and the tax on intangible property (cash in banks, stocks, and bonds, etc.). Thus, most Nebraskans found they no longer had to pay a personal property tax and quickly forgot that farmers and business people were not so favored.

The constitution prevented the Legislature from making further exemptions until in the general election of 1970, the voters approved Amendment 10, which permits the Legislature to classify and exempt personal property as it sees fit.

The 1971 Legislature failed to pass an implementing law but the 1972 Legislature approved a law calling for a five-year program, increasing the personal property exemptions on farm machinery, livestock and business inventories by 12.5 percent per year to a maximum 6 1/2 percent exemption by 1977. Reimbursements to local subdivisions from sales and income tax sources were based on actual valuations of the personal property involved.

IN 1977, THE Legislature passed LB 518 calling for a complete exemption, over a three-year period, of the personal property tax on farm machinery, then business inventories, and finally in the third year, on livestock. The maximum reimbursement to the counties was to be \$70 million, to be distributed on the basis of 1976 valuations.

The first court test found that this represented a "frozen" situation, contrary to the constitution. LB 882 passed in 1980 sought to patch over the distribution problem with a formula which would permit the personal property tax reimbursement fund to increase above \$70 million as local property taxes increased.

The Supreme Court, in turn, found that to be unconstitutional and distribution of the \$70 million was delayed.

The 1981 Legislature passed LB 284 with a formula to distribute the \$70 million for 1980-81 and 1981-82 as follows: \$38 million on the basis of actual value of agricultural real estate; \$31 million on the actual value of industrial real estate; and \$1 million on actual value of suburban residential real estate. Then the 1982-83 distribution was to be on the basis of all real estate.

THE DISTRICT Court ruling on LB 284 is that the law does not include any factor such as population, to measure the relative needs of counties and political subdivisions for public funds. It also stated that the law had the effect of distributing the most to counties which had the least need.

Unfortunately, like state aid to education, the argument over the revenue distribution has become highly politicized between rural and urban legislators.



# church services

**CHRISTIAN LIFE ASSEMBLY**  
(A. R. Weiss, pastor)  
Sunday: Sunday school, 9:45 a.m.; worship, 10:45; evening worship, 7:30 p.m.  
Wednesday: Evening worship, 7:30 p.m.

**EVANGELICAL FREE CHURCH**  
1 mile East of Country Club (Larry Ostercamp, pastor)  
Sunday: Sunday school, 10 a.m.; worship, 11; evening service, 7 p.m.  
Wednesday: Bible study, 8 p.m.

**FAITH EVANGELICAL LUTHERAN CHURCH**  
Wisconsin Synod (Wesley Bruns, pastor)  
Sunday: Worship, 8:30 a.m. Sunday school, 9:30  
Wednesday: Confirmation class, 3:30 p.m.

**FIRST BAPTIST CHURCH**  
(Edward Carter, pastor)  
Sunday: Morning worship, 9:45 a.m., coffee fellowship, 11, Sunday church school, 11:20; evening worship and fellowship, 7 p.m. Singing (third Sunday evening of each month), 7 p.m.  
Tuesday: "Time Out for Small Fry", Good News Club for all youngsters, Gannaway home, 923 Windom St., 3:30 p.m.  
Wednesday: Midweek service, 7 p.m. Diaconate meeting (second Wednesday of each month), 9:15 p.m.

**FIRST CHURCH OF CHRIST**  
1110 East 7th (John Scott, pastor)  
Sunday: Bible school, 9:30 a.m., worship, 10:30  
Midweek home Bible study groups. For information call 375 4743 or 375 4703

**FIRST TRINITY LUTHERAN CHURCH**  
Altona Missouri Synod (Willard Kassulke) (vacancy pastor)  
Sunday: Worship, 9 a.m.; Sunday school, 10  
Monday: Confirmation instruction, 4:15 p.m.  
Wednesday: Bible study, 2 p.m.

**FIRST UNITED METHODIST CHURCH**  
(Kenneth Edmonds, pastor)  
Thursday: Chancel choir rehearsal, 7 p.m.  
Sunday: Worship, 9:30 a.m., coffee 'n conversation, 10:30, church school, 10:45; Christian Fellowship Club roller skating party, 7 p.m.  
Monday: Council on Ministries, 7 p.m.; administrative board, 8 p.m.  
Wednesday: "Merry" prayer breakfast, 6:30 a.m.; Morning Glories Group, 9; Naomi Group, 2 p.m.; Theophilus Bible study, 2; junior and youth choir rehearsal, 4; Sisters of Patience Group, 8; Gospel Seekers Group, 8

**GRACE LUTHERAN CHURCH**  
Missouri Synod (Thomas Mendenhall, pastor) (Jon Vogel, assoc. pastor)  
Thursday: Grace bowling league, 7 p.m.  
Sunday: The Lutheran Hour, broadcast KTCB, 7:30 a.m. Sunday school and Bible classes, 9; worship with holy communion, 10; adult class and Crossways, 7:30 p.m.  
Monday: Duo Club, 8 p.m.  
Tuesday: Sunday school staff, 7 p.m.  
Wednesday: Men's Bible breakfast, 6:30 a.m. Altar Guild, 2 p.m. Gamma Delta, 7; junior choir, 7; midweek school, 7:30; senior choir, 8

**IMMANUEL LUTHERAN CHURCH**  
Missouri Synod (Lloyd Redhage, vicar)  
Thursday: Ladies Aid with installation of new officers, 2 p.m.  
Sunday: Sunday school and Bible class, 9 a.m.; worship, 10  
Wednesday: Confirmation, 4:30 to 5:45 p.m.

**INDEPENDENT FAITH BAPTIST CHURCH**  
208 E. Fourth St. (Bernard Maxson, pastor)  
Sunday: Sunday school, 10 a.m.; worship, 11; evening worship, 7:30 p.m.  
Wednesday: Bible study, 7:30 p.m.  
For free bus transportation call 375 3413 or 375 2358

**JEHOVAH'S WITNESSES**  
Kingdom Hall, 616 Grainland Rd  
Thursday: Congregational book study, 7:30 p.m.  
Sunday: Bible educational talk, 9:30 a.m.; Watchtower study, 10:20  
Tuesday: Theocratic school, 7:30 p.m.; service meeting, 8:20  
For more information call 375 2396

**LIVING WORD FELLOWSHIP**  
Wayne Woman's Club Room, 222 Pearl St. (Rick Deemy, pastor)  
Tuesday: Childrens Bible class and adult fellowship, 6:45 p.m. worship and teaching service, 7:30

**ST. ANSELM'S EPISCOPAL CHURCH**  
1006 Main St.

(James M. Barnett, pastor)  
Sunday: Morning prayer, 10:30 a.m.  
**ST. MARY'S CATHOLIC CHURCH**  
(Jim Buschelman, pastor)  
Thursday: Mass, 8:30 a.m.  
Friday: Mass, 7 a.m.  
Saturday: Mass, 6 p.m.  
Sunday: Mass, 8 and 10 a.m.  
Monday: Mass, 8:30 a.m.  
Tuesday: Mass, 8:30 a.m.  
Wednesday: Mass, 8:30 a.m.

**ST. PAUL'S LUTHERAN CHURCH**  
(Doniver Peterson, pastor)  
Thursday: Counseling, 9 a.m.; LCW Naomi Circle, 2 p.m.  
Sunday: Sunday school and adult Bible study, 9:15 a.m.; worship, 10:30  
Wednesday: LCW general meeting, 7 p.m.; seventh and ninth grade confirmation, 7:30; eighth grade confirmation, 8:30

**THEOPHILUS UNITED CHURCH OF CHRIST**  
(Gail Axen, pastor)  
Sunday: Worship, 9 a.m.

**UNITED PRESBYTERIAN CHURCH**  
(Robert H. Haas, pastor)  
Sunday: Choir, 9 a.m.; worship, 9:45; coffee and fellowship, 10:35; church school, 10:50  
Wednesday: UPW Sewing Day, 9 a.m.; choir, 7 p.m.; Bible study, 8

**WESLEYAN CHURCH**  
(Harold Nichols, pastor)

Sunday: Sunday school, 9:45 a.m.; worship, 11; Bible study, 7 p.m.; evening worship, 7:30  
Wednesday: Prayer meeting, Bible study and CYC, 7:30 p.m.

**WAKEFIELD CHRISTIAN CHURCH**  
(Marty Burgus, pastor)  
For schedule and services and/or transportation call Ron Jones, 375 4355.

**Morning in a Snapper**  
111 Main 225 3850 Wayne, Nebr.

**YOUR 1-STOP WEDDING CENTER**



See us for:  
Carlton Craft INVITATIONS ENCLOSURES NAPKINS  
THANK YOU RECESSION ITEMS ATTENDANTS GIFTS

A complete selection that will please every Bride yet the prices are moderate.

Your Bridal Headquarters

**Ben Franklin**

## WINTER FABRIC CLEARANCE

# 30% OFF



	WAS	NOW
Decorator Fashions Cotton blends	\$1.49 yd.	\$1.04
Casements	\$1.39 yd.	97¢
Corduroy 100% Cotton	\$2.99 yd.	\$2.09
Printed Sportswear 100% Cotton	\$1.59 yd.	\$1.11
Stretch Denim 50% Poly, 50% Cotton	\$3.19 yd.	\$2.23
Terry Chenille 100% Polyester	\$4.59 yd.	\$3.21
Terry Fleece	\$4.59 yd.	\$3.21
Velour Orion/Dacron blends	\$4.49 yd.	\$3.14
Brushed Sleepwear 100% Polyester	\$1.99 yd.	\$1.39

One huge table of fabric was 30% off!

Now slashed to **50% OFF**

Shop and Save Today!

**\*OT BEN FRANKLIN** Wayne

**wayne senior citizens center**  
georgia janssen, director

**SENIOR CALENDAR**  
Thursday, Jan 21: Band visits Wayne Care Centre 2 p.m.; qu 11 making, 2 p.m.; bridge, 3 p.m.  
Friday, Jan 22: Pitch party, 3 p.m.  
Monday, Jan 25: Bingo, 1:30 p.m.; Bible study, 2:30 p.m.  
Tuesday, Jan 26: Quilting and crafts, 2 p.m.; film, 3 p.m.  
Wednesday, Jan 27: Helen Beckman, nutritional speaker, 1 p.m.; crocheting class, 2 p.m.  
Thursday, Jan 28: Slides, 2 p.m.; bridge, 3 p.m.

**Tuesday, January 26**  
**Roast Long Island Duckling**  
Half a juicy young tender Duckling with Orange Glaze served with Fried Rice. Includes our famous Salad Bar, Choice of Potato, Coffee or Hot Tea.  
**\$7.50**

**Thursday, January 28**  
**Scampi**  
3 Large Shrimp Balled or Sauteed in Butter. Includes our famous Salad Bar, Choice of Potato, Coffee or Hot Tea.  
**\$7.75**

We Are Now Open for Noon Lunch  
11:30 a.m. - 2:00 p.m. Monday thru Saturday

Remember Thursday, Jan. 21st  
Serving Primo Rib

**Wagon Wheel**  
STEAKHOUSE AND LOUNGE  
Open 7 Nights A Week  
Ph (402) 256-3812 Laurel, Nebraska

Support your Northeast Nebraska Feeders Association

## SURBER'S Clearance

For Ladies	For Men
★ All Sportswear Blazers, Skirts, Jackets <b>Save 25% to 50%</b> Or More	★ Men's Suits <b>Save 20% to 50%</b> Values to \$180.00
★ Coats <b>1/3 to 1/2 Off</b>	★ Coats Cords - Leathers - Down <b>Save 1/4 to 1/2</b>
★ Dresses <b>1/3 to 1/2 Off</b>	★ Velour Shirts Values to \$34.00 <b>\$11.99 to \$16.99</b>
★ Blouses <b>1/2 Off</b>	★ Arrow Dress Shirts <b>1/2 Price</b>
★ Sweaters <b>\$9.88</b>	★ Sweaters <b>Save 25% to 50%</b> From \$11.99 Up
★ Junior Tops <b>\$3.99</b>	★ Shoes All Boots and Shoes <b>20% to 40% Off</b>
★ Junior Cords & Slacks <b>1/2 Price</b>	★ Jeans <b>All Jeans On Sale</b> Large Group Values to \$25.00 \$8.00 to \$12.99 Large Group Designers, Reg. \$39.00 \$22.99 All Others At Least <b>20% Off</b>
★ Lingerie <b>Save 20% to 50%</b>	
★ Junior Jeans <b>1/2 Price</b>	

**SURBER'S**

# BUILD A \$270,292 NEST EGG FROM CHICKEN FEED.



**THE NEW TAX-DEFERRED INDIVIDUAL RETIREMENT ACCOUNTS—IRAs.**

Contrary to popular belief, you don't need big bucks to build a retirement nest egg. At least not any more.

That's worth repeating: \$1,000 a year for 30 years, plus interest, could equal over a quarter of a million dollars.

Then, when you retire, you'll probably be in a lower tax bracket, paying less taxes.

Because the new tax-deferred Individual Retirement Accounts at the State National Bank let you build a sizable retirement fund from modest annual investments.

To get all the details about affordable IRAs, see the professionals at the State National Bank. They'll show you how a little chicken feed can help you hatch a golden egg for a golden retirement.

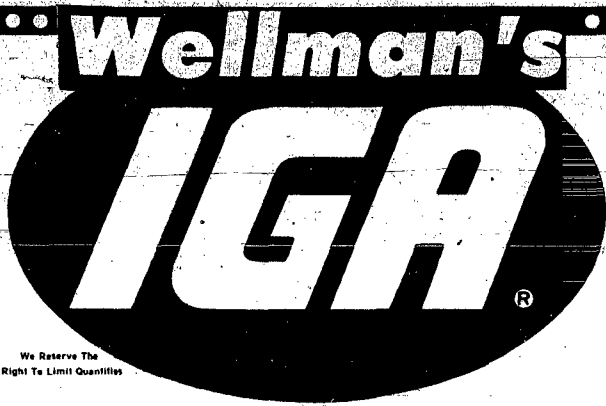
Or, if you prefer, deposit the maximum amount for an individual, \$2,000 a year. Which could make you a half of a millionaire in 30 years.

And because our IRA plans are tax-deferred, you deduct the annual investment from your yearly taxable income. So you'll pay no federal taxes on your IRA until you start withdrawing funds (minimum age 59½).

Note: The above calculations are intended to be an example of how regular deposits into an IRA can grow into a substantial sum. This is not a guarantee of interest rates or end financial results.

**Stop In Today and Check Our Current Rates On IRA's.**

**The State National Bank and Trust Company**  
Wayne, NB 68787 • 402/375-1130 • Member FDIC  
Main Bank 122 Main • Drive-In Bank 10th & Main



IGA TableRite  
USDA Choice Boneless  
**Chuck Roast**

**\$1.69**  
Lb.



Support your  
Northeast Nebraska  
Feeders Association

IGA TableRite  
USDA Choice Boneless  
**Chuck Steak**  
**\$1.79**  
Lb.

Store Hours:  
Mon. thru Sat.  
8 a.m.-9 p.m.  
Sunday  
10 a.m.-6 p.m.

**Pleasing You ...  
Pleases Us!**

Prices Effective Through January 25, 1982

IGA TableRite  
Young Tender Sliced  
**Beef Liver** Lb. **79¢**

IGA TableRite  
Extra Lean  
**Ground Beef** Lb. **\$1.49**

Hillshire Farm  
Old Fashioned N/C  
**Wieners** Lb. **\$1.99**

Hillshire Farm  
Wimmer 12-Oz. Pkg.  
**Wieners** 3-Lb. Bag Ea. **\$5.89**

Hillshire Farm  
Wimmer 12-Oz. Pkg.  
**Wieners** Ea. **\$1.29**

Wilson Sliced Slab  
**Bacon** Lb. **\$1.29**

IGA TableRite 1-Lb. Pkg.  
**Luncheon  
Meat** Ea. **\$1.59**  
(Bologna, Thick Bologna, Beef Bologna, P&P  
Loaf, Spiced Luncheon and Cotto Salami)

Louis Rich 1 1/2 Lb. Avg.  
**Turkey Ham** Lb. **\$1.69**

IGA TableRite Beef  
**Stew Meat** Lb. **\$1.89**

**NOW! THE BIGGEST SAVINGS IN TOWN  
ON OVER 10,000 FOOD ITEMS!!**

It's true! A typical supermarket carries over 10,000 different food items. But only at Wellman's will you get issued FREE GOLD & SILVER SAVING CERTIFICATES on all of them!

And this is in addition to the BIG SAVINGS our customers already get with our everyday LOW, LOW PRICES!

**EARN EXTRA MONEY.** \$5. . \$10. . \$20. . \$50. . \$75 AND MORE!

Stop in and get your FREE GOLD & SILVER PORTFOLIO. It contains all the details on how you too can EARN EXTRA MONEY!

We issue FREE GOLD & SILVER SHARES every day with each purchase of \$5.00. Now through Tuesday are DOUBLE SHARE DAYS with our newspaper coupon and a purchase of \$10.00 or more!

Shop Through Tuesday.  
Use This Coupon.  
Get DOUBLE G&S SHARES.



IGA 16-Oz. Reg. 77c **19¢** With 20 Gold and Silver Shares  
**Saltine Crackers**

IGA 24-Oz. Reg. 97c **59¢** With 20 Gold and Silver Shares  
**Vegetable Oil**

Ragu 15.5-Oz. Reg. 95c **39¢** With 20 Gold and Silver Shares  
**Spaghetti Sauce**

Wagners 12-Oz. Orange or Grape Reg. 69c **29¢** With 20 Gold and Silver Shares  
**Drink**

Cold Power 49-Oz. Reg. 52.15 **\$1.59** With 20 Gold and Silver Shares  
**Laundry Detergent**

IGA 10 1/2-Oz. Cream of Mushroom or Cream of Chicken  
**Soup**  
**3/89¢**

Generic 40-Lb.  
**Water Softener Pellets**  
**\$2.49**

Parkay 1-Lb. Quarters  
**Margarine**  
**49¢**

Golden Ripe  
**Bananas**  
**25¢** Lb.

Snoboy 2-Lb. **Carrots** **59¢**

Texas Green Lb. **Cabbage** **19¢**

Snoboy Red 10-Lb. **Potatoes** **\$1.19**

Generic Irregular Pieces 29-Oz. **Pears** **79¢**

Lays 8-Oz. **Potato Chips** **99¢**

Tuffy's Chunks or Hi-Pro 25-Lb. **Dog Food** **\$5.39**

Kraft Midget Colby Longhorn 16-Oz. **Cheese** **\$1.99**

Blue Bunny 16-Oz. **Sour Cream** **79¢**

Generic 10-Lb. **Bird Seed** **\$1.49**

IGA Unsweetened 46-Oz. **Grapefruit Juice** **89¢**

Swiss Miss Bonus Pack 34.5-Oz. **Hot Cocoa** **\$2.99**

Minute Maid 12-Oz. **Orange Juice** **99¢**

Weight Watchers 6-Pak **Fudge Bars** **\$1.19**

IGA Long 12-Oz. **Spaghetti** **39¢**

Generic 6-Oz. **Tomato Paste** **3/\$1.00**

Generic Chili Hot 15-Oz. **Beans** **3/\$1.00**

Fresh Baked Is Best  
Natural Grain  
**Bread**  
**89¢** Loaf  
Get Second Loaf Free

COUPON COUPON COUPON  
Booth Breaded 1-Lb.  
**Round Shrimp**  
**\$3.79**  
Expires 1-26-82 w/coupon

COUPON COUPON COUPON  
Booth Extra Crunchy Buttermilk 12-Oz.  
**Fish Fillets**  
**\$1.59**  
Expires 1-26-82 w/coupon

COUPON COUPON COUPON  
100-Ct.  
**Bufferin**  
**\$2.19**  
Expires 1-26-82 w/coupon

COUPON COUPON COUPON  
Hershey 24-Oz. Bottle  
**Chocolate Syrup**  
**\$1.29**  
Expires 1-26-82 w/coupon

COUPON COUPON COUPON  
Comet 21-Oz.  
**Cleanser**  
**59¢**  
Expires 1-26-82 w/coupon

COUPON COUPON COUPON  
Vanish 34-Oz.  
**Crystals**  
**99¢**  
Expires 1-26-82 w/coupon

COUPON COUPON COUPON  
Betty Crocker Assorted 15 to 17 Oz. Angel Food  
**Cake Mixes**  
**\$1.09**  
Expires 1-26-82 w/coupon

COUPON COUPON COUPON  
Quaker Life 15-Oz.  
**Cereal**  
**\$1.19**  
Expires 1-26-82 w/coupon

# hoskins news

mrs. hilda thomas 565-4569

## HIGHLAND WOMAN'S EXTENSION CLUB

The Highland Woman's Extension Club met with Mrs. Mary Kollath last Thursday afternoon. Guests were Mrs. Arden Melcher and Mrs. Bill Willers of Stanton.

The meeting opened with the Extension Club Creed in unison. Mrs. Orville Broekemeier presided at the business meeting. For roll call, each member brought an antique article.

The secretary and treasurer's reports were given by Mrs. Norris Langenberg. Correspondence was read and the president reported on the recent council meeting.

For the lesson, Mrs. Melcher spoke on antiques and displayed several antique articles. She also discussed articles brought by members.

Mrs. Ron Lange will be hostess for the next meeting on Feb. 11. Mrs. Arthur Behmer will have the lesson.

## BIRTHDAY CLUB

Mrs. Edwin Brogie entertained members of the Hoskins Birthday Club at the fire hall on Saturday evening.

Other guests were Mrs. Clarence Kruse and Mrs. Myrtle Winter of Norfolk and Mrs. Norris Langenberg and Mrs. Walter Koehler.

Buncho prizes went to Mrs. Herman Opler, high; Mrs. Erwin Ulrich, second high and Mrs. LaVern Walker, low.

Guest high went to Mrs. Clarence Kruse, second high to Mrs. Myrtle Winter and low to Mrs. Walter Koehler.

## KARD KLUB

Mr. and Mrs. Loren Dinkel entertained the Kard Klub on Saturday evening.

Card prizes were won by Ray

mond Walker and Mrs. Herman Bretschneider, high and Mr. and Mrs. Hilpert Neltzke, low. Mrs. Herman Bretschneider received the traveling prize. Mr. and Mrs. Raymond Walker will host the next meeting on Feb. 7.

## HELPING HAND CLUB

Mr. and Mrs. Bill Wendt entertained the Helping Hand Club the evening of Jan. 13. Buck Bishop was a guest.

Card prizes went to Bob Marshall and Mrs. Henry Mitelstaedt, high; Henry Mitelstaedt and Mrs. Bill Wendt, low and Buck Bishop and Mrs. Harry Schwede, traveling.

The club is planning a potluck supper at the Harry Schwede home on Jan. 30.

The next regular meeting will be their annual chili and oyster

supper at the Bob Marshall home on Feb. 10.

## INSTALLATION

Installation of church officers was held during services at Trinity Lutheran Church on Sunday. Pastor Wesley Bruss officiated. Church council officers elected are Bill Willers, chairman, Elmer Peter, vice chairman, David Papstein, secretary, John Mangels, synod treasurer, Alvin Wagner, elder, Howard Fuhrman, trustee and Scott Deck, board of education.

## Zion Lutheran Church

(Robin Fish, pastor) Sunday, worship service 8:45 a.m., Sunday school 10 a.m. Bible Institute at Christ Lutheran Norfolk, 7:30 p.m.

Wednesday: Catechetical instruction, 3:30 p.m.

## Peace United Church of Christ

(John David, pastor) Sunday: Worship service, 10 a.m., Sunday school, 11 a.m., confirmation class, 7:30 p.m., choir practice, 7:30 p.m.

## Trinity Evangelical Lutheran Church

(Wesley Bruss, pastor) Thursday: LWMS, 1:45 p.m. Sunday: Sunday school, 9:30 a.m., worship service, 10:15 a.m. Wednesday: Bible study, 10:30 a.m. Young People's Society, 7:30 p.m.

## SOCIAL CALENDAR

Thursday, Jan. 21: Gef to Gether Card Club, Mrs. Raymond Walker, LWMS, 1:45 p.m. Monday, Jan. 25: Town and Country Garden Club, Mrs. George Langenberg, 8 p.m.

# SAV-MOR DRUG

PHONE 375-1444

THE LOFT Value Ritte

# Great Values

HOURS:  
M-T-W-F - 8:30-6:30  
Thursday - 8:30-9:00  
Saturday - 8:30-6:00  
Sunday - 10:00-5:00

MAKE US YOUR  
**Valentine**  
HEADQUARTERS

## January Inflation Fighters

<p>15 oz <b>Vaseline Intensive Care</b> REG. VALUE \$3.94 <b>\$2.19</b></p>	<p><b>POTS &amp; PANS</b> 7 Piece Stainless Steel Cookware Set With FREE Stainless Steel 5 Pieces Including Ladle, Serving Spoon, Skimmer, Fork &amp; Spatula with Rack, Kitchen Tool Set REG. VALUE \$39.95 <b>\$24.99</b></p>	<p><b>Vaporizer</b> NORTHERN 1 GAL. REG. VALUE \$10.95 <b>\$5.99</b> SAVE \$5.00</p>
<p>32 oz <b>Listerine MOUTHWASH</b> REG. VALUE \$4.77 <b>\$2.49</b></p>	<p><b>Q-tips</b> 300s REG. VALUE \$2.83 <b>\$1.59</b></p>	<p>Justen <b>Battery Charger</b> Auto/Truck REG. VALUE \$14.95 <b>\$7.99</b></p>
<p><b>Magnetic Travel BACKGAMMON SET</b> REG. VALUE \$24.95 <b>\$6.99</b></p>	<p><b>Heat Pad</b> MOIST HEAT SUNMARK REG. VALUE \$17.95 <b>\$8.99</b></p>	

Support your Northeast Nebraska Feeders Association

# PENSION POWER

That's our IRA - Individual Retirement Account - now every wage earner qualifies. Save up to \$2,250 a year. Pay no taxes on savings or earnings until you retire and receive an immediate tax deduction. Earn the highest interest on your savings and start saving today. Ask us about IRA.

**First Savings Co.**  
703 Main Street Wayne, NE Phone 375-2590  
Hours: Weekdays 9:5 - Saturday 9:12  
A First National Holding Co. Subsidiary Chartered and regulated by the Neb. Dept. of Banking

## dixon news

mrs. dudley blatchford 384-2588

### BIRTHDAYS CELEBRATED

Mrs. J. L. Saunders was a last Thursday evening guest in the Lowell Saunders home in observance of her birthday.

Jan. 10 dinner guests in the Louis Abts home for Karen and Angela Abts birthdays were Mr. and Mrs. David Abts and family, Mr. and Mrs. John Abts and Mr. and Mrs. Steve Greve.

Luncheon guests in the David Abts home Thursday afternoon for Angela's birthday were Hannah Cook, Tara Erwin, Teresa Baumgardner, Randy Quist, Dustin Ankeny, Billy and Kim Hirsch, Carol Hansen, Kelli, Lub Berstedt and Eric Abts. Mrs. Erwin Hirsch was also a visitor. Mr. and Mrs. Earl Eckert were supper guests.

Jan. 13 evening visitors in the Paul Borg home for the hostess' birthday were Mr. and Mrs. Larry Witt and Cory and Mr. and Mrs. Sterling Borg.

Saturday dinner guests in the Leslie Noe home were Mr. and Mrs. Ross Armstrong and Roger. Mr. and Mrs. Curtis Armstrong and Mr. and Mrs. Eric Bensen of Ponca in observance of Eric Bensen's and the hostess' birthdays.

Mr. and Mrs. Stan Starling and family were Jan. 11 supper guests in the Howard Gillaspie home in Allen for Stan's birthday. Mr. and Mrs. Gordon Casal, John and Douglas of Belden were Sunday dinner guests of Elsie Patton in observance of her birthday. Mr. and Mrs. Lawrence Fox were evening visitors.

Logan Center United Methodist Church (Arthur W. Swarthout, pastor) Sunday: Worship, 9:15 a.m., Sunday school, 10:15 a.m.

Dixon United Methodist Church (Anderson Kwankin, pastor) Sunday: Worship, 9 a.m., Sunday school, 10 a.m.

St. Anne's Catholic Church (Jerome Spenner, pastor) Sunday: Mass, 9:30 a.m.

MR. AND MRS. Harold McDonald of Neligh were Sunday dinner guests in the Ernest Carlson home.

Mr. and Mrs. Jim Erwin and family were afternoon guests.

Brian Bloom, Mel Swick Jr. of Dixon, Jim Dahlquist of Concord, Doug Rickett of Ponca, Rick Schram, Dennis Gould and Gary Conrad of Newcastle returned home Saturday after spending the past week skiing at Keystone, Colo. and attending the National Livestock Show in Denver.

Robin Kietzman of Pasadena, Calif. and Diana Hansen of Butte were Jan. 13 dinner guests in the D.H. Blatchford home.

Mr. and Mrs. Harold George were last Thursday supper guests of the Harlan Watsons in Omaha. Mr. and Mrs. Kenny Kardell and Mr. and Mrs. Don Kardell were weekend guests in the Henry Peterson home in Holdrege.

They attended a party Saturday evening for Mrs. Nina Anderson in honor of her 80th birthday.

## ALLIED LUMBER & SUPPLY

113 So. Main  
375-2035

Save on the Cost of Heating Your Home

# Huntsman \$349

From Atlanta Stove Works  
24" Double Door

• Cast Iron Doors, Legs and Heat Chamber

• TRI-AIR draft control

• Heath level selection

• Lined with firebrick

• Conviently hand built doors tightly shut but opens with a twist

• For use with wood only



MODEL II

### INSIDE STORM WINDOW KIT

helps reduce heat loss and infiltration. Cover, plastic frame and hardware. **\$4.49**

### FOAM TAPE WEATHERSTRIP

Airtight, self adhesive, 3/16 x 3/8. **66¢** 17 ft. roll

### FURNACE FILTERS

Most Sizes  
White Quantities Last **Two For 99¢**

Mon.-Fri. 7:30 to 5:30 - Sat. 7:30 to 4:00

<p><b>GERITOL</b> 100 w/14 FREE TWO WEEKS SUPPLY FREE REG. VALUE \$9.42 <b>\$5.29</b></p>	<p>St. Joseph <b>ASPIRIN</b> FOR CHILDREN 36 REG. VALUE 83¢ EACH <b>2/\$1.00</b></p>	<p>6 oz <b>Static Guard</b> REG. VALUE \$3.26 <b>\$1.89</b></p>
<p><b>OXY-10 OXY WASH™</b> ANTIBACTERIAL SKIN WASH 4 oz 1 oz REG. VALUE \$3.99 <b>\$2.29</b> YOUR CHOICE</p>	<p><b>Soft-Dri</b> Unscented Baby Powder/Sup Dry NON-STING ANTI-PERSPIRANT 2.5 oz REG. VALUE \$2.40 <b>\$1.29</b></p>	<p><b>dexamtrim</b> NEW EXTRA STRENGTH WITH THE COMPO. CAPSULES AND GEL PLAN REG. VALUE \$4.49 <b>\$2.69</b></p>
<p><b>New Freedom</b> Maxi Pad 30 REG. VALUE \$5.26 <b>\$2.89</b></p>	<p><b>L'OREAL Ultra Rich</b> Shampoo / Conditioner Normal/Oily/Dry X-Body/Reg./Blow Dry 16 oz. 2.95 REG. VALUE \$2.74 <b>\$1.49</b> YOUR CHOICE</p>	<p><b>Soft Soap</b> Brown/White/Gold/Blue 10.5 oz. REG. VALUE \$2.17 <b>\$1.19</b></p>
<p><b>Triaminic®</b> Expectorant/Syrup 4 oz. REG. VALUE TO \$3.37 <b>\$1.89</b> YOUR CHOICE</p>	<p><b>Colgate</b> MFP FLUORIDE TOOTHPASTE MFP FLUORIDE GEL 8.4 oz. 7oz. REG. VALUE \$2.74 <b>\$1.39</b> YOUR CHOICE</p>	<p><b>Gillette Atra</b> BLADES w/FREE RAZOR REG. VALUE \$2.65 <b>\$1.59</b></p>

NOT RESPONSIBLE FOR PRINTERS ERRORS ITEMS LIMITED TO QUANTITIES ON HAND



# carroll news

**WOMANS CLUB**  
"Hobbies" was the theme when the Carroll Womens Club met last Thursday at the home of Mrs. Esther Batten for a 12:30 p.m. casserole and dessert luncheon. There were 18 members present.

The luncheon was served by Mrs. Arnold Junck, Mrs. Merlin Kenny, Mrs. Lloyd Morris and Mrs. Milton Owens.

Mrs. John Swanson was in charge of the business meeting. Mrs. Arnold Junck read a report of the last meeting and also

thanks yous. that were received from those receiving Christmas boxes from the club.

Mrs. Ervin Wittler read the treasurer's report.

Roll call was "a favorite craft" and each brought an article of some craft work.

Mrs. Esther Batten and Mrs. Etta Fisher had the lesson on "learning a new craft."

Plans were made for the next meeting on Feb. 11 when the Community Service is the theme for the day, the group will entertain Senior Citizens of the Carroll

area at a Valentine's party that is tentatively set to be held at Ron's Steak House beginning at 2 p.m.

Mrs. Merlin Kenny and Mrs. Ervin Wittler will be in charge of the entertainment.

Hosting the event are Mrs. Otto Wagner, Mrs. Robert Johnson, Mrs. Martin Hansen and Mrs. Lena Rethwisch.

**METHODIST WOMEN**  
Nine members were present Jan. 13 when the United Methodist Women met at the fellowship hall.

Officers who were recently elected and in charge of the meeting are Mrs. Don Harmeler, president and Mrs. Gene Rethwisch, secretary. Mrs. Walt Lage is treasurer.

Mrs. Louise Boyce, devotional leader, presented a topic.

The first dinner in a series of three, served for the public, will be Wednesday, Jan. 27, beginning at 11:30 a.m. Chairmen for the dinner are Mrs. Don Harmeler, Mrs. Jim Fredricksen and Mrs. Lowell Rohlf. Mrs. Esther

**mrs. edward fork 585-4827**

Hansen and Mrs. Perry Johnson will be in charge of the "Country Store."

Mrs. Harmeler announced that there will be a series of Bible studies held at the fellowship hall on the evenings of Feb. 8, 15 and 22 and March 1.

Mrs. Merlin Kenny and Mrs. Louise Boyce had the lesson entitled "Open your Ears, Eyes and Hears."

Mrs. Walter Lage and Mrs. Ron Jensen were hostesses.

The next regular meeting will be Feb. 10.

**Presbyterian-Congregational Church**  
(Gail Axen, pastor)  
Sunday: Combined worship service at the Presbyterian Church, 10 a.m.

**United Methodist Church**  
(Kenneth Edmonds, pastor)  
Sunday: Sunday school, 10 a.m.; worship service, 11 a.m.

**Barrell Inn**  
WAKEFIELD

David & Wayne Tiegen  
Owners  
326 Main St.  
Wakefield, NH  
287-9503

<b>Serving LUNCHES</b> Monday-Friday 11:30-1:30	<b>Pubst Blue Ribbon</b> Now On <b>TAP</b>	<b>DINNER</b> Friday Featuring Cornish 3:30-9:30 Saturday Prime Rib & Chicken 3:30-9:30
---	---	---

# winside news

**NEIGHBORING CIRCLE**  
The Neighboring Circle Club met last Thursday at the home of Mrs. Hans Carstens with 13 members and two guests, Mrs. George Carstens and Mrs. Dean Carstens.

The meeting opened by singing "God Bless Our Native Land."

Roll call was "what you like best about winter."

Everyone was reminded to get recipes in for the Community Cook Book.

The next meeting will be Feb. 11 with Mrs. Richard Carstens.

The business closed with the club song followed by the Lord's Prayer.

Blind pitch was played for entertainment. Prizes were won by Mrs. Richard Carstens and Mrs. Natalie Smith. Guest prize was won by Mrs. George Carstens.

The next meeting will be Jan. 25.

**SELLING COOKIES**  
The Winside Girl Scouts started selling their Girl Scout Cookies on Friday.

**COTERIE CLUB**  
Mrs. Lloyd Behmer entertained the Coterie Club last Thursday.

Mrs. Yleen Cowan received high score and Mrs. Ben Bensch, second high.

The next meeting will be Jan. 28 with Mrs. Bensch.

**United Methodist Church**  
(Shirley Carpenter, pastor)  
Sunday: Sunday school, 9:15 a.m.; worship, 10:30 a.m.

**Trinity Lutheran Church**  
(Peter Jark-Swain, supply minister)  
Saturday: Confirmation class, 1 p.m. at church  
Sunday: Sunday school, 9:30 a.m.; worship, 10:30 p.m.; congregational annual meeting after worship services.

Wednesday: Young Women's Circle, 7 p.m. at church.

St. Paul's Lutheran Church

(John E. Hafermann, pastor)  
Thursday: Women's Bible study, 1:30 p.m.  
Saturday: Couples Club, Brian Stoltenbergs, 7:30 p.m.  
Sunday: Sunday school and Bible classes, 9:30 a.m.; adult class in parsonage basement, 9:30 a.m.; worship, 10:30 a.m.; adult Bible study, 7:9 p.m.  
Monday: Women's Bible study, 9:30 a.m.  
Tuesday: Dialogue Evangelism, 7 p.m.  
Wednesday: Sunday school teachers meeting, 7:30 p.m.

**SOCIAL CALENDAR**  
Thursday, Jan. 21: Center Circle Club, Mrs. Marie Sueti; Theophilus Ladies Aid  
Friday, Jan. 22: G.T. Pinochle Club, Mrs. Herman Jaeger; Three-Four Bridge Club, Mrs. Wayne Imel  
Monday, Jan. 25: Community Club  
Tuesday, Jan. 26: Senior Citizens, Stop Inn, 2 p.m.; Tuesday Bridge Club, Clarence Pfeifers  
Thursday, Jan. 28: Colorie Club, Mrs. Ben Bensch.

**SCHOOL CALENDAR**  
Friday, Jan. 22: Girls and boys basketball at Wausa, 4:30 p.m.  
Saturday, Jan. 23: Wrestling at

Oakland, 10 a.m.; girls conference basketball at Ponca and Wynot.  
Monday, Jan. 25: Boys conference basketball at Homer and Winside.  
Tuesday, Jan. 26: Girls conference basketball at Ponca and Wynot; junior high basketball at Coleridge, 3 p.m.  
Thursday, Jan. 28: Seventh, eighth and ninth girls basketball at Norfolk Catholic, 4:30 p.m.; boys conference basketball, Homer and Winside.

**A SURPRISE** birthday party was held Jan. 10 for Leroy Damme.

Afternoon guests were Mrs. Ella Damme, Irene Damme, Mrs. Ella Berg, Mr. and Mrs. George Jaeger and Kevin, Mr. and Mrs. Brad Jaeger and Candace and Mr. and Mrs. Don Westerhaus.

Mr. and Mrs. Jeff Farran and son, Jeffrey, of Fremont have moved to Winside and are residing at the former home of Charlie Weible.

Jeffrey Farran, son of Mr. and Mrs. Jeff Farran, entered the Lutheran Hospital at Norfolk on Sunday. He has intestinal flu.

**INSTALLATION SERVICES**  
Pastor Robin Fish of Pierce was in charge of special installation services Saturday evening during worship services at St. Paul's Lutheran Church.

**FIREMEN**  
The Carroll firemen held their annual oyster and chili supper Sunday evening at Ron's Steak House.

About 50 firemen and their wives attended.

Cards furnished entertainment, with prizes going to Ed Simpson, Arthur Cook, Mrs. Arnold Junck and Mrs. Cliff Bethune.

St. Paul's Lutheran Church  
(Pastor Robin Fish)  
Saturday: Children's Bible study, 6 p.m.; worship service, 7 p.m.

**SOCIAL CALENDAR**  
Thursday, Jan. 21: Delta Dek Bridge Club, Mrs. Perry Johnson  
Friday, Jan. 25: Senior Citizens, cards at the Center in the fire hall  
Tuesday, Jan. 26: Way Out Here Club, Mrs. Melvin Magnuson; American Legion Auxiliary, Mrs. Gordon Davis; Tops Club at the school, 7:30 p.m.  
Wednesday, Jan. 27: Dinner, 11:30 a.m. at the Methodist Church for the public to attend.

**DEBBIE** Jones and Jennifer Isom were overnight guests in the Dennis Rohde home Friday to honor Kristen for her 11th birthday.

Prizes at cards went to Tom Morris, Mrs. Etta Fisher, Erwin Morris and Miriam Morris.

A cooperative lunch was served.

**NEW SALES REPRESENTATIVE**



**Motorola Communications and Electronics, Inc.** welcomes aboard **Russell Lane** as their new sales representative. Russ will be responsible for serving the citizens of the following counties with their two way communication needs: Cedar, Colfax, Madison, Pierce, Stanton and Wayne. The Russ Lane family reside in Schuyler.

# PRE-INVENTORY SALE



**1/2 RACK BLAZERS**  
Cords, Polyester, Suede, Tweed, Velour and Gabardine

**1/2 Price**



**1/3 Off SKIRTS**  
Wool Blend Plaids and Solids and Poly Gab



**Ladies PANT SUITS**  
Sizes 10-20 and 14 1/2-24 1/2  
One Rack

**1/4 - 1/2 Off**



**1 RACK DRESSES**  
1/2 Price  
Sizes 8 to 20, 16 1/2 to 24 1/2



**Ladies POLYESTER PANTS**  
Reg. to \$22  
Sizes 6 to 20 and 32 to 40

**\$6.67 to \$14.00**

Elastic Waist Pull-On, Dark Shades

**LADIES SWEATERS**

**1/2 Off**

*Kuhn's*

Support your Northeast Nebraska Feeders Association

# GOOD YEAR

## ROLL'EM OUT!

**HURRY!**

**CUSTOM POLYSTEEL**

**\$66<sup>95</sup>**

P225/75R15 W.W., plus \$2.78 F.E.T.

**NO TRADE NEEDED**

**HURRY!**

**VIVA XG RADIAL**

**\$54<sup>95</sup>**

(P215/75R15 N.W., plus \$2.57 F.E.T.)

**NO TRADE NEEDED**

**HURRY!**

**CUSTOM POLYSTEEL**

**\$42<sup>95</sup>**

(P185/80R13 N.W., plus \$1.92 F.E.T.)

**NO TRADE NEEDED**

**HURRY!**

**TRACKER L.T. TBL.**

**\$66<sup>95</sup>**

(800-16.5 8-ply, plus \$3.18 F.E.T.)

**NO TRADE NEEDED**

**HURRY!**

**TRACKER L.T. TBL.**

**\$68<sup>95</sup>**

(950-16.5 8-ply, plus \$4.21 F.E.T.)

**NO TRADE NEEDED**

TIRES... TIRES... TIRES!

Qty.	Tire	Size & Description	PRICE	Plus FET no trade needed
4	Arriva Radial	P155/80R13 Black	44.95	1.52
4	VIVA Radial	P155/80R13 N.W.	42.95	1.44
4	VIVA Radial	P185/80R13 N.W.	48.95	1.78
4	Custom Polysteel	P155/80R13 BI.	41.95	1.53
4	Arriva Radial	P185/80R12 BI.	43.95	1.59
4	Arriva Radial	P185/80R13 N.W.	36.95	1.38
10	Custom Polysteel	P205/75R15 N.W.	54.95	2.47
9	Tempo Radial	P205/75R14 N.W.	56.95	2.42
28	Custom Polysteel	P215/75R13 N.W.	48.95	2.39
12	Arriva Radial	P225/75R15 W.W.	54.95	2.73
18	Arriva Radial	P235/75R15 W.W.	56.95	2.93
15	Sub. XG Polyglass	L78x15 BI.	68.00	3.32
20	Custom Polysteel Radial	P235/75R15 N.W.	74.95	3.01
3	Sub. P.E. 4-Ply	L78x15 N.W.	54.95	3.11
12	Custom Polysteel Rad.	P195/75R14 N.W.	33.95	2.18
4	Eagle ST Radial R.W.L.	P195/70R14	69.95	2.24
4	Arriva Radial	P195/78R14 W.W.	73.95	2.16
6	Arriva Radial	P205/75R14 W.W.	76.95	2.30
6	Tempo Radial	P205/75R14 W.W.	72.95	2.30
10	Custom Traced Steel Radial	875/15 N.W.	52.95	2.18
4	Eagle ST Radial	P215/70R16 R.W.L.	69.95	2.69
10	Tempo Radial	P215/75R14 W.W.	72.95	2.47

**Liberal Budget Terms**  
—Low Monthly Payments

## Coryell Derby

211 Logan  
Wayne  
375-2121

GOOD YEAR

PICKUP & RV TIRES!

2	Hi Miller Wide Tread Tbl.	10-16.5 8-ply	93.95	4.42
2	Glass Guard Mud Tbl.	800-16.5 4-ply	67.95	3.32
4	Super Hi Miller T.T.	825-20 10-ply	124.95	4.33
2	Wrangler W.T. Tbl.	31-1050x15 4-ply	88.95	3.92
2	Tracker XG Tbl.	875-16.5 4-ply	78.95	3.78
4	Tracker XO T.T.	750-16 8-ply	64.95	3.97
4	Cushion Miller Tbl.	8-19.5 8-ply	89.95	4.61
4	Hi Hi Miller T.T.	700x15 8-ply	54.95	2.81
2	Tracker Super Grip T.T.	750x16 8-ply	87.95	3.97
2	Wrangler All Season Radial Tbl.	750x16 8-ply	112.95	4.34

NEW CAR CHANGEOVERS

4	General Block Radial	P175R15 BI.	44.95	2.13
4	General & Hi-Traction Radial	H175R15 N.W. & BI.	55.95	2.79
4	Goodyear Custom Polysteel Radial	P175R15 BI.	55.95	2.47
10	Winged Brands Radial	P175R15 N.W.	48.95	2.37
4	General Radial Tbl.	875R14 N.W. 4-ply	64.95	3.97
4	Hibernian Mud T.T.	700x15 8-ply	54.95	2.81
4	U.S. Royal Radial Tbl.	P175R15 N.W.	55.95	2.47



Photography: LaVon Beckman

## Bubble becomes ocean bottom

**SECOND GRADE STUDENTS** at Allen Consolidated Schools learn by doing in Mrs. Barb Heckathorn's class. As part of a two-week study unit on oceanography, Mrs. Heckathorn constructed a giant plastic bubble held up by a fan to simulate the ocean bottom. Once inside the bubble, which contains a variety of colorful sea shells, maps, books, and a blue blanket resembling the ocean bottom, students have

the feeling of being underwater. Pictured peeking out from the bubble are Holly Dickens, daughter of Janice and Jerry Dickens, and Patrick Brentlinger, son of Sharon and Ray Brentlinger. Mrs. Heckathorn said the bubble was designed as a mid-January pick-me-up and to make the unit more realistic to her 18 second graders.

## belden news

mrs. ted leapey 682-2889

**PRESBYTERIAN WOMEN**  
The Union Presbyterian Women's Association held its meeting last Thursday afternoon in the church parlors with 15 members present.  
Mrs. Manley Sulton opened the meeting by reading a poem.  
Following the business meeting, a book report, "Papa's Wife," a story of love and faith was given by Mrs. Ed Keller.  
Mrs. Muriel Stapelman was seated at the birthday table.  
On the serving committee were Mrs. Ted Leapey, Mrs. Loyd Heath and Mrs. Muriel Stapelman.

**COMMUNITY CLUB**  
There were 35 persons present the evening of Jan. 13 for supper and meeting of the Community Club held in the cafe.  
Officers elected for the next year were Larry Alderson, president; Arnold Hansen, vice president; and Mrs. Robert Wobbenhorst, secretary-treasurer.  
Plans were discussed concerning the NCIP program for this year.

**LEGION AUXILIARY**  
The Legion Auxiliary met the evening of Jan. 12 in the Bank Parlors.  
Following the meeting, lunch was served by Mrs. Don Winkelbauer.

**BROWNIES AND JUNIOR SCOUTS**  
The Brownies and Junior Scouts met Jan. 12 in the fire hall. The girls worked on their craft projects and did aerobic dance exercises. Helpers were Mrs. Franklin Hefner and Mrs. Clyde Cook.  
Vicki Meier served treats.

**Presbyterian Church**  
(Thomas Robson, pastor)  
Sunday: Church, 9:30 a.m.; church school, 10:30 a.m.

**Catholic Church**  
(Father Robert Duffy)  
Sunday: Mass, 10:30 a.m.

**MRS. ALVIN Young and Mrs. Pearl Young** visited from last Thursday until Saturday in the Ron Sausser home in Omaha.

Carol Cook of Fremont spent the weekend in the Clyde Cook home.

Mrs. Dwight Willet of Woodbine, Iowa spent from Jan. 11 until Jan. 14 in the home of Mrs. Fred Pfanz.

Mrs. Willet visited the afternoon of Jan. 13 in the home of Dorothy and Evelyn Smith.

Sunday dinner guests in the Ron Stapelman home for the 5th birthday of Heather Stapelman were Mr. and Mrs. Joy Johnson, Mr. and Mrs. Milton Johnson and boys of Bloomfield, Mr. and Mrs. Jerry Fredrickson and family of Carroll, Mr. and Mrs. Gary Stapelman and family, Mr. and Mrs. Clarence Stapelman and Mrs. Alvin Young.

Mr. and Mrs. George Brackley of Lincoln spent Saturday in the Floyd Root home.

Mrs. Floyd Miller and Mrs. Martha Halm attended the funeral of Marvin Mitchell held Jan. 7 in the St. Matthews Catholic Church in Hallboro, Ore. They visited in the homes of Mrs. Dorothy French and Mr. and Mrs. Gary McCord.

## concord news

mrs. art johnson 584-9482

**PLEASANT DELL**  
The Pleasant Dell Club met Thursday afternoon with Minnie Carlson as hostess. Hazel Carlson was a guest.  
Roll call was answered with "What I Don't Keep Well." Year books were handed out and 1982 projects discussed.  
Officers for 1982 are Elaine Draghu, president; Donna Roebber, vice president; Nina Carlson, secretary and Bernice Rewinkle, treasurer.  
Afternoon entertainment was making place mats.  
The Feb. 11 hostess will be Hazel Hank.

**GOLDEN RULE**  
The Golden Rule Club met Thursday afternoon with Mrs. Quinten Erwin as hostess.  
Roll call was answered by 11 members with what I accomplished in 1981 and new goals were made for 1982.  
Mrs. Clarence Rastede read two articles, "School-Closing" and "Good Old Days."  
The Feb. 11 hostess will be Mrs. Derald Rice.

**Concordia Lutheran Church**  
(David Newman, pastor)  
Thursday: Lutheran Church Women meet, cooperative lunch, 2 p.m.  
Sunday: Sunday school and Bible classes, 9:30 a.m.; morning worship service, 10:45 a.m.

**Evangelical Free Church**  
(John Westermohr, pastor)  
Saturday: Rescheduled Couples Bible study, Larry Carlson home, 7:30 p.m.  
Sunday: Sunday Bible school, 9:59 a.m.; morning worship service, 11 a.m.; evening service, 7:30 p.m.

**Wednesday: Ladies Bible study, 7:30 p.m.**

**St. Paul Lutheran Church**  
Sunday: Morning worship service, 7:30 a.m.; Sunday school, 8:30 a.m.  
Thursday: Ladies Aid, 2 p.m.

**MRS. ESTHER Rubeck** joined her family at the Robert Anderson home in Stanton on Sunday to celebrate the birthdays of family members Esther Rubeck, Merle Rubeck of South Sioux City, Mrs. Harold Jones of Tekamah and Michelle Anderson of Stanton.  
About 30 members were present for the event.  
The Dwight Johnsons, Jennifer and Michael spent the weekend in Omaha on a business project and visiting in the Jo Nanfito home.

The Keith Clarksons of Laurel and the Robert Clarksons and daughters were Sunday guests in the Jim Clarkon home in honor of the hostess' birthday.

Birthday guests in the Dwight Johnson home the evening of Jan. 11 to honor the host were the Gary Schroeder family of Allen, the Melvin Puhmans and Mrs. Art Johnson.  
Jan. 11 evening guests in the Virgil Pearson home to honor the hostess' birthday were the Chuck Sohler family of Laurel and the Harvey Taylors.

Clara Swanson was honored for her 88th birthday the afternoon of Jan. 11 at the Senior Center in Concord. There were about 30 present for afternoon refreshments, sponsored by LCW Elizabeth Circle and her family.

## allen news

mrs. ken linafelter 635-2403

**BOARD OF EDUCATION**  
The Allen Board of Education met the evening of Jan. 11 and elected officers for the coming year.

Elected were Harlin Mattes, president; Matt Stapleton, vice president; Jackie Williams, secretary; Larry Boswell, treasurer; Larry Boswell and Matt Stapleton, transportation committee; Marilyn Creamer and Jackie Williams, curriculum committee and the entire board, Americanism committee.  
Larry Boswell was appointed by the chairman to be the District No. 70 representative to 1982 Legislative Relation Newtork to NSSBA.

**SENIOR CITIZENS**  
The Senior Citizens sponsored a card party at the center in Allen last Thursday evening with 31 persons attending.  
Nola Potter won the door prize. Card prize winners were Carmen Stewart and Ben Jackson for high and Nola Potter and Duane Koester for low.  
Lunch was served by Opal and Pete Allen, Ardith Linafelter and Joanne Rahn.

**CEMETERY ASSOCIATION**  
The Eastview Ladies Cemetery Association has been cancelled for the month of January.  
The February meeting will be held the 5th with Mabel Mitchell.

**SANDHILL CLUB**  
The Sandhill Club was cancelled for the month of January.  
The February meeting will be held the 11th at the home of Kathryn Mitchell.

**SUNSHINE CIRCLE**  
The Sunshine Circle of the Allen United Methodist Church met the afternoon of Jan. 12 at the home of Irene Armour with eight members and two guests, Alice Steel and Gail Folsom, present.  
Articles were read by Pearl Snyder, Ethel Fox and Irene Armour.  
Those attending the tour to Pender received a picture taken by Betty Puckett of the Puckett Studios.  
The February meeting will be held the 9th at the home of Irene Armour. Those attending are to bring an idea for Valentine tray favors for the Wakefield Health Care Center.

**First Lutheran Church**  
(Rev. David Newman)  
Thursday: Dorcas Circle sewing workshop, 10 a.m.; potluck dinner served at noon.  
Sunday: Worship, 9 a.m.; Sunday school choir will sing; Sunday school, 10 a.m.; Married Couples League, evening.  
Springbank Friends Church (Rev. Alan Burnett)  
Prayer meeting each Wednesday evening, 7:30 p.m., home to be announced.  
Sunday: Sunday school, 10

am worship 11 a.m. from "Reflections of His Love," with Joni Erickson, will be shown during the worship hour.

**Wednesday:** Monthly meeting evening meeting at the church  
**United Methodist Church** (Rev. Anderson Kwank)  
Thursday: UMW, 2 p.m. at the home of Ella Isom; Dorothy Hale lesson leader; Eleanor Jones devotional leader; Connie Lindahl and Phyllis Geiger hostesses.  
Sunday: Sunday school, 9:30 a.m.; worship, 10:30 a.m.; Bible study, 7:30, at the home of Bill and Pearl Snyder.  
Choir each Wednesday at 6:15 p.m. Confirmation each Wednesday after school.

**COMMUNITY CALENDAR**  
Thursday, Jan. 21: Waterbury Homemakers, 12:30 potluck dinner at the home of Fern Benton-Gasser; Post VFW Auxiliary, 7:30 p.m.; Martinsburg School, Gasser, Post VFW, 7:30 p.m.; Martinsburg fire hall; TNT Extension Club, 7:30 p.m.; Eve Hall Emma Shortt lesson leader.  
Monday, Jan. 25: Pleasant Hour Club, 6:30 p.m., dinner at Farmer's Cafe; husbands are guests.

Tuesday, Jan. 26: Pleasant Hour Club, 2 p.m. with Eva Stark.  
Thursday, Jan. 28: Chatterbox Club, 2 p.m. with Marlene Swan son; bring \$2 bingo prize and salad for lunch; Rest White Club, 2 p.m. with Inez Jackson.  
Friday, Jan. 29: Knitting Club, 2 p.m. with Genevieve Larson.

**SCHOOL CALENDAR**  
Thursday, Jan. 21: South Sioux City freshmen girls basketball at Allen, 4:30 p.m.  
Friday, Jan. 22: Boys and girls varsity doubleheader basketball at Walthill, beginning at 6:30 p.m.; team bus leaves at 5 p.m.  
Saturday, Jan. 23: Junior high boys and girls basketball with Wakefield at home, 2 p.m.; conference basketball tournament begins; Allen girls play Bancroft at Ponca, evening.  
Monday, Jan. 25: Conference boys basketball tournament begins at Homer; Allen boys play Ponca, evening.  
Tuesday, Jan. 26: Girls division semifinals at Ponca.  
Thursday, Jan. 28: Junior high girls basketball at Laurel, 3:30 p.m.; boys semifinals at Homer.  
Friday, Jan. 29: Division finals at Homer.  
Saturday, Jan. 30: Division championship at Wayne State College; junior high basketball at Ponca, 9:30 a.m.

**MR. AND MRS. Bill Snyder, Paul Snyder and Cindy Puckett** attended the baptism of the Snyder's granddaughter, Shelly Marie Williams, infant daughter of the Larry Williams; at the St. Michael's Church in South Sioux City on Sunday.

**FOR SALE**

**Professionals - Farm Sales & Management**  
**Wayne - Phone 375-2990**  
**Dakota City - Phone 987-3007**  
Felix Dorcay Brokers - John Dorcay  
Mark Dorcay Salesman - Galen Wiser

Equal Housing Opportunities  
Each Office Independently Owned and Operated

**JEFF'S NEW HOURS:**  
**6:00 a.m. to 7:00 p.m. Daily**  
(Except Mondays Closed at 5:00)

**EVERY SUNDAY MOON BUFFET**

**FISH & CHICKEN EVERY SUNDAY NIGHT**  
(Plus Our Regular Menu)  
*Open Sundays 7 a.m. - 2 p.m. and 4:30 - 7:00*

**Jeff's Cafe**  
212 Main Ph. 372-9729 Wayne

<p><b>BILL'S</b> STORE HOURS 8 A.M. - 9 P.M. Mon. thru Fri. 8 A.M. - 9 P.M. Saturday 8:30 A.M. - 6 P.M. Sunday</p> <p>Prices good Wednesday, January 20 thru Tuesday, January 26</p>	<p><b>BILL'S GW</b> offer a chance to win in ANOTHER</p> <p style="text-align: center;"><b>Cook up some Magic SWEETSTAKES</b></p> <p>DETAILS FOR KRAFT COOK UP SOME MAGIC SWEETSTAKES IN OUR STORE.</p> <p><b>PARKAY QUARTERED MARGARINE</b> 49¢ <b>KRAFT PARKAY LIGHT SPECIAL MARGARINE</b> \$1.29</p> <p><b>THOUSAND ISLAND DRESSING</b> \$1.09</p> <p><b>MACARONI &amp; CHEESE DINNER</b> 39¢</p> <p><b>EARLY GARDEN SLICED PEACHES</b> 69¢</p>	<p><b>SHURFRESH WHIPPED TOPPING</b> 49¢ <b>ICE CREAM &amp; CREAM LETTLE</b> 99¢ <b>OLD-FASHION ROUND and S-Quart BUCKET ICE CREAM</b> CHECK OUR VARIOUS PRICES</p> <p><b>CLEAN-UP SALE ON SHURFRESH</b> <b>ICE CREAM &amp; CREAM LETTLE</b> 99¢ <b>OLD-FASHION ROUND and S-Quart BUCKET ICE CREAM</b> CHECK OUR VARIOUS PRICES</p>	<p><b>PORK LOIN ROAST</b> 99¢ <b>END CUT PORK CHOPS</b> \$1.09 <b>MINUTE STEAKS</b> \$2.09</p> <p><b>WINNERS BEST NC WIENERS</b> \$2.09 <b>WIMMERS JUBILEE SAUSAGE</b> \$1.89 <b>WIMMERS HONEY LOAF</b> \$1.09 <b>NEW ENGLAND SAUSAGE</b> \$1.39 <b>SMOKIES</b> \$1.39 <b>SHERMAN TURKEY HAM</b> \$1.59 <b>STEAK-UMM</b> \$2.89</p> <p><b>DELICATESSEN</b> <b>LARGE BOLOGNA</b> \$1.29 <b>JOHN MORRELL BRAUNSCHEWEGER</b> 79¢ <b>SUMMER SAUSAGE</b> \$1.59 <b>FRENCH FRIES</b> 35¢ <b>BROASTED CHICKEN</b> \$3.89</p>	<p><b>REGISTER THRU TUESDAY - DRAWING TUESDAY EVENING FOR FREE \$50 WORTH OF GROCERIES</b> \$1,000 GIVE-AWAY DRAWING IN OUR STORE EVERY THURSDAY NIGHT AT 8:00 P.M. 100% PURE 75% LEAN</p> <p><b>GROUND BEEF</b> NO RETAILERS PLEASE Lb. 99¢</p> <p><b>GROUND CHUCK</b> \$1.49 <b>LITTLE SIZZLERS</b> \$1.19 <b>FARMLAND LINK SAUSAGE</b> 99¢ <b>LEAN BONELESS STEW BEEF</b> \$1.89 <b>BACON</b> \$1.59 <b>JOHN MORRELL ALL BEEF FRANKS</b> \$1.29 <b>SHURFRESH LUNCHEON MEATS</b> \$1.09 <b>MAPLE RIVER BACON</b> \$1.09 <b>SHERMAN'S RING BOLOGNA</b> \$1.39</p>
--	--	--	---	--

# wakefield news

mrs. walter hale 287-2728

## OFFICERS INSTALLED

Officers for 1982 of the Order of Eastern Star were installed at a meeting held at the Masonic Temple Jan. 12.

Charlene Schroeder was installed Worthy Matron; Alvin Sundell, Worthy Patron; Bonnie Bressler, associate Worthy Matron; Tom Sherlock, associate Worthy Patron; Frances Malmborg, secretary; Marie Bellows, treasurer.

Brenda Gustafson, conductor; Diane Larson, associate conductor; Sharon Crossdale, organist; Nancy Kinney, chaplain; Edith Hanson, marshal.

Glenn Swift, Ada; Luella Huggenberger, Ruth; Kathy Muller, Esther; Priscilla Eaton, Martha; Esther Turney, Electa; Margaret Kinney, warden and Iris Larson, sentinal.

Mrs. Margaret McCuslin was installing officer; Helen Gustafson, installing chaplain; Leona Bri, installing marshal and Margaret Paulson, installing organist.

Following the installation, lunch was served by Karen Jones and Kathy Potter.

## BIRTHDAY PARTY

Viola Holm was surprised with a 75th birthday party at the Senior Citizens Center on Sunday.

Hostess the event were her children, Mrs. Robert Schenck and Kim of Abilene, Kan. Mr. and Mrs. A.D. Brown, Mr. and Mrs. William Domsch and Mr. and Mrs. Robert Hollman of Wakefield.

Other dinner guests were Mr. and Mrs. Steve Lutz of Allen, Carl Domsch, Deb Domsch, Mr. and Mrs. Baxter Brown, Ada Bartels, Lucille Bartels, Ebb

## SOUP LABELS NEEDED

Students of the Wakefield Community Schools who have been collecting Campbell soup labels will have the opportunity of collecting a bonus for their efforts.

Mrs. Alice Johnson, teacher, said that if 200 labels from chunky soups only can be collected by Jan. 30, the school will receive a bonus worth 2,000 labels.

Anyone having chunky soup labels may turn them in at the school or to a grade school student.

## FRIENDLY TUESDAY

Seven members of the Friendly Tuesday Club met Jan. 12 at 2 p.m. with Bertha Anderson.

Eleanor Park had the lesson on show and tell of crafts. Mrs. Eugene Meier gave a reading on "The Growing of a Mistletoe."

The Homemakers creed was read and they sang the birthday song for Mrs. Alfred Meier's birthday.

Mrs. Anderson was presented a get well gift for the members. Mrs. Anderson served a salad luncheon at a candle-lit table.

Mrs. Joe Anderson will host the Tuesday, February 9 meeting at 2 p.m.

## CHURCH CIRCLE

Ten members of the Salem Lutheran Church Circle 4 met with Mrs. Norman Swanson on Jan. 12 at 8 p.m.

Mrs. Robert Oberg gave the lesson.

Leader for 1982 is Mrs. Lowell Newton and recorder is Mrs. Rodney Haglund.

Mrs. James Gustafson will host the Tuesday, Feb. 9 meeting at 8 p.m.

## CELEBRATES BIRTHDAY

Myron Hienemann celebrated his birthday Sunday evening.

Guests were Mr. and Mrs. Gerald Muller and family, Mr. and Mrs. Marvin Borg of Concord, Donald Baker, Mr. and Mrs. Walter Hale of Allen and Mr. and Mrs. Ronald Wenstrand and family of Wakefield.

The evening was spent playing UNO. High prizes went to Mrs. Marvin Borg and Gerald Muller and low prizes went to Mrs. Walter Hale and Nathan Hienemann.

## Christain Church

(Marty Burgess, preacher)

Thursday: Kings Daughters, 2 p.m.; young adult Bible study, 7:30 p.m.

Sunday: The Living Word KTCB-AM 1590, 9 a.m.; Bible school for all ages, 9:30 a.m.; junior and morning worship, 10:30 a.m.; school of Christain living for all ages, 6 p.m.; choir practice, 7 p.m.

Wednesday: Allen area Bible study, 7 p.m.; Wayne, Wakefield area Bible study, 7:30 p.m.; Emerson, Thurston, Pender area Bible study, 7:30 p.m.

## Evangelical Covenant Church

(E. Neil Peterson, pastor)

Friday: Covenant Senior Citizens bingo at the Care Center, 2:30 p.m.

Sunday: Worship at the Care Center, 8 a.m.; Sunday school, 9:45 a.m.; worship, 11 a.m.; evening worship, 7:30 p.m.

Wednesday: Choir, 7:30 p.m.; Bible study and prayer meeting, 7:30 p.m.

## Immanuel Lutheran Church

(Lloyd Redhage, vicar)

## United Presbyterian Church

(Rev. Thomas Robson)

Thursday: Circle 1, 9:30 a.m. Circle 2, 2 p.m.

Sunday: Sunday school, 9:30 a.m.; worship, 10:45 a.m. Monday: Seekers, 8 p.m. Wednesday: Children's choir, 3:20 p.m.; chancel choir, 8 p.m.

## Immanuel Lutheran Church

(Rev. Fredrick S. Cook)

Thursday: Bible class, 9:30 a.m.; Gems and Shoots, 3:20 p.m.

Sunday: Sunday school, 9:30 a.m.; worship service, 10:30 a.m. Monday: Altar Guild, 2:15 p.m.

Wednesday: Seventh grade confirmation, 3:30 p.m.; choir rehearsal, 7:30 p.m.; Sunday school teachers meeting, 7:30 p.m.

## Wayne Vets Club

Try our Thursday Night's Special and be sure to be at the Vets Club at 8 p.m. at the Give-Away drawing.

## World Missionary Fellowship

(Jens Kvols, pastor)

Sunday: Sunday school, 9:30 a.m. morning worship, 10:30 a.m. evening fellowship, 7 p.m.

## St. Mary's Catholic Church

(Father Jerome Spenner)

Saturday: Mass, 7:45 p.m. Sunday: Mass, 8 a.m.

# laurel news

mrs. gary lute 256-3584

## CHAMBER OF COMMERCE

The Laurel Chamber of Commerce will meet on Friday, Jan. 22, at 6:30 p.m. in the Senior Citizens Center in Laurel.

The Outstanding Citizenship Award will be presented to a Laurel resident for his or her contributions to the community.

Mal Becker, a 16-year-old magician from Manson, Iowa will entertain. He began performing when he was 13 and is a member of the Society of American Magicians.

Tickets should be purchased ahead of time, but can be bought at the door.

## CPR CLASSES

CPR classes will be offered at the Laurel Concord School for seniors.

The classes are being offered at different hours to accommodate the seniors and their class schedules.

Mrs. Jim Joslin the school nurse, will be instructing the classes.

Those helping with the testing at the end of the session will be Mrs. Marilyn White, Mrs. Marge Dybdal and Sandy Kuchta.

## FARMING FRONTIERS

John Deere Farming Frontiers 1982 was held at the McCorkin Dale implement at Laurel on Jan. 12 with films on new equipment and farm management tips shown at 10 and 2 p.m.

A dinner for about 280 farmers, their wives and friends was served at noon.

Door prizes were won by LeRoy Koch, Warren Stage, Clayton Hartman, Don Oxley, Rod Erwin, Roger Kvols, Vic Kniesche, Quinten Erwin, Dwight Paulson, Cy Smith and George Schroeder.

## GENERAL MEETING

The ALCW General Meeting of the United Lutheran Church in Laurel will be held today (Thursday) at 2 p.m.

All of the members are asked to come to this first meeting of the new year to make plans and set goals for 1982.

Mrs. Gustie Loeb of Laurel is the 1982 ALCW president; Mrs. Bill Norvall, vice president; Mrs. Daryl Johnson, secretary; Mrs. Verneal Peterson, treasurer; Mrs. Gunner Johnson, secretary of education and Mrs. Jim Lofquist, secretary of stewardship. All are from Laurel.

In the four Circle meetings, the book of James is being studied by the members.

Hostesses will be Mrs. Jan Twiford, Mrs. Wilma Paulson, Mrs. Evelyn Klausen and Miss Ella Larson.

## YOUTH FELLOWSHIP

The Wayne Sub-District United Methodist Youth Fellowship meeting will be held on Sunday, Jan. 24 at the Randolph First United Methodist Church. Registration will begin at 3 p.m. with a program on Youth Service Fund and Lenten Drama; to follow.

A chili supper will be served at 5 p.m., followed by the business meeting. Sub-District officers will be elected, who will also be representatives on the District Youth Council. The evening will conclude with a closing challenge and worship service.

## HOMEBUILDERS

The Outstanding Citizenship Award will be presented to a Laurel resident for his or her contributions to the community.

Mal Becker, a 16-year-old magician from Manson, Iowa will entertain. He began performing when he was 13 and is a member of the Society of American Magicians.

Tickets should be purchased ahead of time, but can be bought at the door.

## FAITH CIRCLE

The Faith Circle of the Laurel United Methodist Church will meet in the home of Mrs. Kenneth Tuttle of Dixon on Monday, Jan. 25, at 8 p.m.

The call to prayer and self-denial lesson will be given by Mrs. Camilla Larson of Laurel and Mrs. Lorraine Taylor of Concord.

The special offering will go to support the struggle against racism in the United States. It will be used to support minority women in the ministry, assist the church in a changing community and provide educational support to young minority children.

## United Methodist Church

(Rev. Arthur W. Swarthout)

Thursday: Joy choir, 3:30 p.m.; Homebuilders to Hillcrest Care Center, 6:30 p.m.

Sunday: Sunday school, 9:30 a.m.; worship, 10:45 a.m.; Homebuilders covered dish dinner, 12 noon; United Methodist Youth Fellowship Sub-District Rally at Randolph Methodist Church, leave Laurel, 2:30 p.m.

## United Lutheran Church

(Rev. Kenneth Marquardt)

Thursday: ALCW General Meeting, 7 p.m.

Sunday: Sunday school, 9 a.m.; worship, 10:15 a.m.; installation of Council, ALCW and Sunday school officers.

Monday: Bible study, 7 p.m. Tuesday: Ladies Bible study, 9:30 a.m. Wednesday: Confirmation, 7 p.m.; choir, 8 p.m.

## Immanuel Lutheran Church

(Rev. Fredrick S. Cook)

Thursday: Bible class, 9:30 a.m.; Gems and Shoots, 3:20 p.m.

Sunday: Sunday school, 9:30 a.m.; worship service, 10:30 a.m. Monday: Altar Guild, 2:15 p.m.

Wednesday: Seventh grade confirmation, 3:30 p.m.; choir rehearsal, 7:30 p.m.; Sunday school teachers meeting, 7:30 p.m.

## Wayne Vets Club

Try our Thursday Night's Special and be sure to be at the Vets Club at 8 p.m. at the Give-Away drawing.

## World Missionary Fellowship

(Jens Kvols, pastor)

Sunday: Sunday school, 9:30 a.m. morning worship, 10:30 a.m. evening fellowship, 7 p.m.

## St. Mary's Catholic Church

(Father Jerome Spenner)

Saturday: Mass, 7:45 p.m. Sunday: Mass, 8 a.m.

**Private Pilot Ground School**

\$100.00 includes books, computer and plotter.

Starting Jan. 26, 1982 — 7 p.m.

Wayne Municipal Airport

For More Details Or To Sign Up Call 375-4664

**Big Savings On 1981 and 1982 Chrysler, Dodge and Plymouth Cars of All Sizes**

**Rebates Up To \$1000.00**

**Over 100 Units in Stock**

**Farmers Garage Inc. Sale & Service**

Since 1936 — Dodge, Neb.

See or Call Gene or Buck

President, Gene Steffensmeyer

Bus. Phone 693-2278 — Home Phone 693-2684

Buck Hansen — Wisner, Neb. — 529-6855

Support your Northeast Nebraska Feeders Association

# Mid-Winter PAINTING SALE

**Prairie \$6.99**

Reg. \$11.95

- Man-made finish on hardboard
- Use over existing walls or stud walls
- Wipes clean in an instant

**Rustic Oak \$8.39**

Reg. \$10.99

- Beautiful but durable
- Next-to-nature look protected by an acrylic topcoat
- Plywood with simulated woodgrain finish

**Irish Elm \$20.69**

Reg. \$27.99

- Great for den, family room or bedroom
- Knots, swirls, grainy texture
- Plywood with genuine hardwood veneer finish

**Hi-Fi Oak \$10.99**

Reg. \$14.95

- Beautiful but durable
- Next-to-nature look protected by an acrylic topcoat
- Plywood with simulated woodgrain finish

**New England Pine \$14.99**

Reg. \$25.69

- Great for den, family room or bedroom
- Knots, swirls, grainy texture
- Plywood with genuine hardwood veneer finish

**Virginia Luan \$10.69**

Reg. \$14.59

- Great for den, family room or bedroom
- Knots, swirls, grainy texture
- Plywood with genuine hardwood veneer finish

**Kansas Oak \$14.59**

Reg. \$19.89

- Great for den, family room or bedroom
- Knots, swirls, grainy texture
- Plywood with genuine hardwood veneer finish

**Brique Blanche \$14.99**

Reg. \$22.99

- Simulated white brick
- Authentic looking; easy to install
- Man-made finish on 1/4" hardboard

**Aegean Blue Aegean Green Beige Carrara \$12.99**

Reg. \$17.99

- High gloss finish on 1/8" hardboard
- Perfect for high moisture areas
- Damp wipes clean

**YOUR CHOICE \$6.39 PER PANEL**

Reg. \$9.29

**Mesa Burlwood**

- Man-made finish on hardboard
- Use over existing walls or stud walls
- Wipes clean in an instant

**Lakeland Birch \$8.49**

Reg. \$10.49

- Man-made finish on hardboard
- Use over existing walls or stud walls
- Wipes clean in an instant

**ALL PANEL MOULDINGS 20% Off**

Sale Prices Limited To Stock On Hand

# Carhart LUMBER CO.

105 Main St. Wayne, Neb. Phone 375-2110



# 10b - want ads

## legal notices

### WAYNE COUNTY BOARD PROCEEDINGS

Wayne, Nebraska  
 January 12, 1982  
 Minutes of the last meeting were read and approved.  
 It was moved by Belermann that Kenneth Eddie be elected Chairman of Board of County Commissioners. Jerry Pospisil seconded the motion. Roll call was available for: Belermann-Aye; Eddie-Aye; Pospisil-Aye.  
 On motion by Belermann and seconded by Pospisil, Gretta Morris was re-elected Clerk-Secretary to the Board. Roll call vote resulting as follows: Belermann-Aye; Eddie-Aye; Pospisil-Aye.  
 On motion by Pospisil, it was resolved that each member of the Board be, and hereby is, appointed as a committee of one to investigate claims from the maintenance or temporary relief and also to pass upon any claims filed against all County funds. Each Commissioner shall act as such Committee in and for his Commissioner District, and all persons requiring aid shall make application directly to the appropriate Commissioner, or the County Welfare Director. Under the resolution, the County Clerk is authorized to call a physician in emergencies. The motion was seconded by Belermann. Roll call vote: Belermann-Aye; Eddie-Aye; Pospisil-Aye.  
 On motion by Belermann, the wage scale for the Highway Department employees is to be directed by the entire Board of County Commissioners. Motion was seconded by Pospisil and approved. Roll call vote: Belermann-Aye; Eddie-Aye; Pospisil-Aye.  
 A motion was made by Pospisil and seconded by Belermann to re-appoint Kenneth Eddie as Chairman of the County Board of Welfare. Roll call vote: Belermann-Aye; Eddie-Aye; Pospisil-Aye.  
 It was moved by Pospisil and seconded by Belermann to set the Custodian's salary at \$300.00 per month for the ensuing year. Roll call vote: Belermann-Aye; Eddie-Aye; Pospisil-Aye.  
 It was agreed that all members will retain their positions now presently held on Area Boards.  
 The Board acknowledged receipt of a refund check in the amount of \$1793.00 from National Fire and Marine Insurance Company who carries the Workman's Compensation Insurance for the County of Wayne for the coming year, 1982. Roll call vote: Belermann-Aye; Eddie-Aye; Pospisil-Aye.  
 On motion by Pospisil, seconded by Belermann, the wage scale for the Highway Department employees is to be set at \$3.00 per hour for a 40 hour week with time and one half for any time over 40 hours, also holidays and Sundays. Experienced part time help is to receive \$4.50 per hour. Both above described wages retroactive to January 4, 1982.  
 On motion by Belermann, the Board elected to retain the services of Schroeder, Land Surveying & County Surveyor for the year, 1982, being paid one case by case basis. The motion was seconded by Pospisil. Roll call vote: Belermann-Aye; Eddie-Aye; Pospisil-Aye.  
 On motion by Pospisil, seconded by Belermann, Loren R. Park was appointed County Superintendent of Schools for the coming year, 1982. Roll call vote: Belermann-Aye; Eddie-Aye; Pospisil-Aye.  
 Motion by Pospisil and seconded by Belermann to adjourn the meeting. Roll call: Belermann-Aye; Eddie-Aye; Pospisil-Aye.  
 STATE OF NEBRASKA  
 COUNTY OF WAYNE  
 I, the undersigned, County Clerk for the County of Wayne, Nebraska, hereby certify that all of the subjects included in the attached proceedings were contained in the agenda for the meeting of January 12, 1982, were conducted in accordance with the provisions of the Nebraska Statutes, and that the same were held in public view at the office of the County Clerk. That such subjects were contained in said agenda for at least twenty four hours prior to said meeting, that the said minutes of the meeting of the County Commissioners of the County of Wayne were in written form and available for public inspection within ten working days and prior to the next convened meeting of said body.  
 IN WITNESS WHEREOF, I have hereunto set my hand this 13th day of January, 1982.  
 Ogrretta M. Morris  
 Wayne County Clerk  
 (Publ. Jan. 21)

NOTICE OF RENEWAL OF RETAIL LIQUOR LICENSE  
 Notice is hereby given that pursuant to Section 33.13(5) liquor license may be automatically renewed for one year from May 1, 1982, for the following retail liquor licensee, to wit:  
 Andrew Mahes  
 318 Main  
 St. Paul, Minn.  
 Notice is hereby given that written protests to the issuance of automatic renewal of license may be filed by any resident of the City on or before February 10, 1982, in the office of the City Clerk. That in the event protests are filed by three or more such persons hearing will be had to determine whether continuation of said license should be allowed.  
 THE CITY OF WAYNE, NEBRASKA  
 Norman J. Melton, City Clerk  
 (Publ. Jan. 21)

NOTICE OF RENEWAL OF RETAIL LIQUOR LICENSE  
 Notice is hereby given that pursuant to Section 33.13(5) on and off beer license may be automatically renewed for one year from May 1, 1982, for the following retail beer licensee, to wit:  
 George C. Merkins  
 Lots 4, 5 and 6 Block  
 Original Town  
 Allen, Nebraska  
 Notice is hereby given that written protests to the issuance of automatic renewal of license may be filed by any resident of the Village of Allen on or before February 10, 1982, in the office of the Village Clerk. That in the event protests are filed by three or more such persons hearing will be had to determine whether continuation of said license should be allowed.  
 Pearl M. Snyder, Clerk  
 (Publ. Jan. 21)

NOTICE OF RENEWAL OF RETAIL LIQUOR LICENSE  
 Notice is hereby given that pursuant to Section 33.13(5) liquor license may be automatically renewed for one year from May 1, 1982, for the following retail liquor licensee, to wit:  
 Godfather's Pizzeria  
 1425 S. 2nd St.  
 Omaha, Nebraska  
 Notice is hereby given that written protests to the issuance of automatic renewal of license may be filed by any resident of the City on or before February 10, 1982, in the office of the City Clerk. That in the event protests are filed by three or more such persons hearing will be had to determine whether continuation of said license should be allowed.  
 THE CITY OF WAYNE, NEBRASKA  
 Norman J. Melton, City Clerk  
 (Publ. Jan. 21)

NOTICE OF RENEWAL OF RETAIL LIQUOR LICENSE  
 Notice is hereby given that pursuant to Section 33.13(5) liquor license may be automatically renewed for one year from May 1, 1982, for the following retail liquor licensee, to wit:  
 George C. Merkins  
 Lots 4, 5 and 6 Block  
 Original Town  
 Allen, Nebraska  
 Notice is hereby given that written protests to the issuance of automatic renewal of license may be filed by any resident of the Village of Allen on or before February 10, 1982, in the office of the Village Clerk. That in the event protests are filed by three or more such persons hearing will be had to determine whether continuation of said license should be allowed.  
 Pearl M. Snyder, Clerk  
 (Publ. Jan. 21)

MEETING NOTICE  
 A special meeting of the Regional Board of Developmental Disabilities, Governing Board, Wayne, Nebraska will be held at the Central Office, 114 West Third, Wayne, Nebraska at 7:00 p.m. on January 13, 1982. The purpose for holding a special meeting is for discussion of a residence in Wayne, Nebraska.  
 Regional Secretary  
 June Walheim  
 (Publ. Jan. 21)

Every government official or board that handles public moneys, should publish an accounting of it showing where and how each dollar is spent. We hold this to be a fundamental principle to democratic government.  
 Deadline for all legal notices to be published by The Wayne Herald is as follows: 5 p.m. Monday for Thursday's newspaper and 5 p.m. Thursday for Monday's newspaper.

Income Tax Service  
 By  
**Mineshaft Tax & Bookkeeping Service**  
 We have computer service available. Come in appointments not necessary. Tax Returns from \$7.50  
 Wayne Marsh - Ray Buell  
 Phone 375-4488  
 112 E. 2nd St. In the Mineshaft Mall

Planning to add acres to your operation?  
 Call us about long-term financing today.  
**The Land Bank**  
 Close to the land and the people who work it.  
 1305 So. 13th  
 Norfolk  
 Phone 371-1950

## special notice

**THAT EXTRA TOUCH**  
 Cakes baked and decorated to your specifications. Cakes for birthdays, anniversaries, special occasions, family get-togethers, office coffee breaks, tea time... or, for that special someone. Call Randy at 375-1424. No wedding cakes, please.

## for rent

**FOR RENT:** 2 or 3 bedroom apartment, near college. Available NOW! Contact Stollenberg Partners, phone 375-1262.

**FOR RENT:** 2 bedroom basement partially furnished. Near college and downtown. Utilities included. Call 375-1986.

## miscellaneous

**CLOWN FOR** children's birthday parties. Phone number is 375-2105.

**YOU!** can earn the money you want! **FUN!** manage your own time. **INDEPENDENCE!** meet and work with business and community people and many more. **FRIENDS!** learn administrative, supervisory and sales skills. **SUPER!** join the Wayne team. **SPRINT!** let us tell you about our new approach to help you satisfy your needs. Call Vonnie Potts at the Amber Inn 375-4222 Thursday, January 21 9:00 a.m. - 5:00 p.m. **WELCOME WAGON!** An equal opportunity employer.

## MOVING?

Don't take chances with your valuable belongings. Move with Aero Mayflower. America's most recommended mover.  
**Abler Transfer, Inc.**

**BATHTUBS:** Porcelain and fiberglass repaired, refinished and recoloring. Bill Roth, Nebraska Tub and Tile Re-Factory, 829 West Park St., West Point, NE 68788. 402-372-2202, 52111

**BOOKEEPING SERVICES:** Experienced. Have references. Confidential. Call: Sally MacKlin, Carroll, 585-4733.

**FOR RENT:** 3 bedroom house. Close to college, appliances included. Prefer married couples. Phone 375-2355.

**APARTMENT FOR RENT:** 3 room furnished apartment. Call after 5 p.m. or on weekends 375-3161.

## card of thanks

WE WISH to thank all relatives and friends who attended our Golden Anniversary, and those who helped in any way to make this occasion a very special and happy day for us. Also, to all who sent cards and gifts that were able to attend. A special thanks to the Ladies Aid who served and to Pastor Mendenhall for his prayers. Thanks to those that were in the program. A special thanks to the ones who did the decorating. May God bless you each and everyone for any part you played in making this a special day for us. George and Ed Reuter.

## lost & found

**PLEASE RETURN BLUE PARKA,** size 12 taken at Wakefield Skating Rink. I have blue parka size 8 with name Tamie on it. 287-2653.

## real estate

**FOR SALE BY OWNER:** 160 acres, unimproved farm in north, west Wayne County. Phone 605-352-8893 and ask for Red. 11413

## help wanted

**INDIVIDUAL SEEKING FULL-TIME EMPLOYMENT.** Must be able to work with public, farm oriented background a plus but not necessary. No travel required, only career minded persons need apply. Send resume to P.O. Box 400, Wisner, NE 68791. d3116

**HELP WANTED:** Wayne retail store needs bookkeeper qualified to handle double entry system, accs payable, payroll, office machines 40 hours a week, Monday thru Friday. Send resume to Box S, c/o The Wayne Herald, 114 Main St. Wayne, NE 68787. 11813

**FEED SALES:** Experienced or Sales w/Farm Background. Established area. Call on old in resale and new accounts. Sal. Guarantee and Travel Allowance against commissions. Gp Hosp and Insurance benefits. Pension, etc. Send resume to Visi-Vita, Box 363, Sioux City, Ia 51102. WE'RE GROWING. COME GROW WITH US. 11413

**WANTED:** Aggressive, self motivated individual for farm food sales. Liberal commissions in protected territory. No overnight travel. For more information call 1-800-843-3392 and ask for Ron. 11813

## MANAGER NEEDED

A representative of the world's largest manufacturer of fire protection and security equipment now has an immediate opening in the Wayne area. Up to \$40,000 the first year. No experience necessary. Complete training provided. Call 402-439-2570 or 439-2371 between 9 a.m.-12 noon, ask for personnel manager Ken.

## wanted

**THE WAYNE TOURIST CLUB** wants to know how many days you want to travel. Call now for reservations. Morey Hall, 375-9909. Ask for Tim Uber. 11813

## lost & found

**PLEASE RETURN BLUE PARKA,** size 12 taken at Wakefield Skating Rink. I have blue parka size 8 with name Tamie on it. 287-2653.

## real estate

**FOR SALE BY OWNER:** 160 acres, unimproved farm in north, west Wayne County. Phone 605-352-8893 and ask for Red. 11413

## business opportunity

**ATTENTION ALL SALESPERSONS**  
 Is your business down because of increasing inflation?  
 Are good prospects getting few and far between?  
 If so, we have the answer you may be waiting for!  
**We have an unlimited supply of good, qualified leads, working the medicare field. We have top products, excellent training and incomes starting from \$35,000 first year.**  
**THE ANSWER TO INFLATION!**  
**Check us out. Call Collect (402) 371-1758.**  
**MUTUAL PROTECTIVE INSURANCE COMPANY**

**YOU CAN BE** a franchised owner-operator of a Mode O Day store in Wayne. Nationally known popular priced Mode O Day women's apparel. Opportunity for independent ownership and income for women with sales experience, personality and willingness to work. No investment in merchandising required - pay as you sell. Modest investment for fixtures, leasehold improvements and security deposit. Write Lee Johnson, Box 177, La Crescent, MN 55947. 507-895-7949. 11812

## for sale

**NEW BUILDINGS AT FACTORY.** All parts accounted for. All structural steel carries full factory guarantee. Buildings 10,000 square feet to the smallest 1,200 square feet. Must sell immediately. Will sell cheap. Call toll free 1-800-248-0065 or 1-800-248-0321. Ext 777. 118121

## automobiles

**DON'T EVER** buy a new or used car or truck until you check with Arnie's Ford Mercury. Wayne 375-1212. We can save YOU money! 11411

## WANT TO RENT-A-CAR?

See Us FIRST!  
**ARNIE'S**  
 Open Evenings

## mobile homes

**FOR SALE:** 1971 Ford F 250, 4 ton, recent valve job. Good shape. 402-287-2821 after 5 p.m. 12113

**FOR SALE:** Feeder pigs Raised in confinement. Also, 2 and 4 place snowmobile trailers. Call Gordon Graf, Doniphan, Neb 402-744-3141. 11813

**CLASSIFIED ADVERTISING**  
 Regular Rates  
 Standard Ads - 20¢ per word  
 Display Ads - \$2.50 per line per week  
 Speciality Rates  
 Cards of Thanks  
 \$2.50 for 50 words  
 \$4.00 for 100 words  
 \$6.50 for 100-150 words  
 \$8.00 for 150-200 words  
 Garage Sales and Attic Sales  
 2-2 for \$2.00  
 3-5 for \$5.00  
 DEADLINES  
 4 p.m. Tuesday and Fridays  
 Call 375-2600

**MORE IN EVERY WAY • QUALITY**  
**PRICE • VALUE - HERE!**  
 Prices Effective Jan. 21 to Jan. 23

Fresh Sliced BEEF	Smoked HAM SHANKS
LIVER 67¢/Lb.	99¢/Lb.
Fresh Lean GROUND CHUCK	\$1.39/Lb.
Frozen Fresh SPARE RIBS 3-5 Lb. Avg.	\$1.29/Lb.
WHOLE BEEF LOINS Processed and Frozen or WHOLE-BEEF RIBS	\$1.79/Lb.

Support your Northeast Nebraska Feeders Association  
**Johnson's Frozen Foods**  
 HOURS: Mon-Fri. 8 a.m.-5 p.m. Saturday 9 a.m.-1 p.m.  
 116 West 2nd Wayne Ph. 375-1100

**WATERBED**  
 Decorate Your Waterbed & Save!  
**White Gale**  
 At Timberline January 20-26

SHEETS (Includes Top & Bottom and Pillow Cases)		COMFORTERS	
Muslin (Solid Color)	Regular \$37.95 NOW \$27.95	Muslin	Regular \$69.95 NOW \$41.95
Muslin (Designs)	\$39.95 \$29.95	Percale	\$89.95 \$59.95
Percale (Royal)	\$49.95 \$33.95	Satin	\$89.95 \$59.95
Percale (Water Color)	\$59.95 \$42.95	Velvet	\$169.95 \$129.95
Satin (Water Color)	\$59.95 \$45.95		

**WATERBED HEATER**  
 Reg. \$49.95 With Coupon \$34.95  
 Redeemable January 20-26

**WATERBED PILLOWS**  
 Reg. \$9.95 With Coupon \$7.95  
 Redeemable January 20-26

**WATERBED CONDITIONER**  
 Reg. \$3.50 With Coupon \$1.95  
 Special January 20-26

**MATTRESS PAD**  
 Reg. \$24.95 With Coupon \$14.95  
 Special January 20-26

**Timberline WOOD PRODUCTS**  
 Virg & Jan Kardell  
 215 Main St.  
 Wayne, NE  
 Phone 375-1123